

Electronic Supplementary Material

γ -Valerolactone/CuCl₂ biphasic system for high total monosaccharides recovery from pretreatment and enzymatic hydrolysis processes of eucalyptus

Shuhua Mo, Yao Zheng, Jianyu Gong, Minsheng Lu (✉)

Guangxi Key Laboratory of Clean Pulp & Papermaking and Pollution Control, School of Light Industrial and Food Engineering, Guangxi University, Nanning 530004, China

E-mail: luminsheng@gxu.edu.cn

Table S1 pH in solution before and after pretreatment

Solution	Before pretreatment	After pretreatment
GVL/H ₂ O	6.03	4.76
CuCl ₂ /H ₂ O	3.46	1.94
GVL/FeCl ₃	2.12	1.58
GVL/AlCl ₃	2.39	1.74
GVL/CuCl ₂	3.21	2.05
GVL/NaCl	5.05	4.42
GVL/LiCl	4.92	4.07

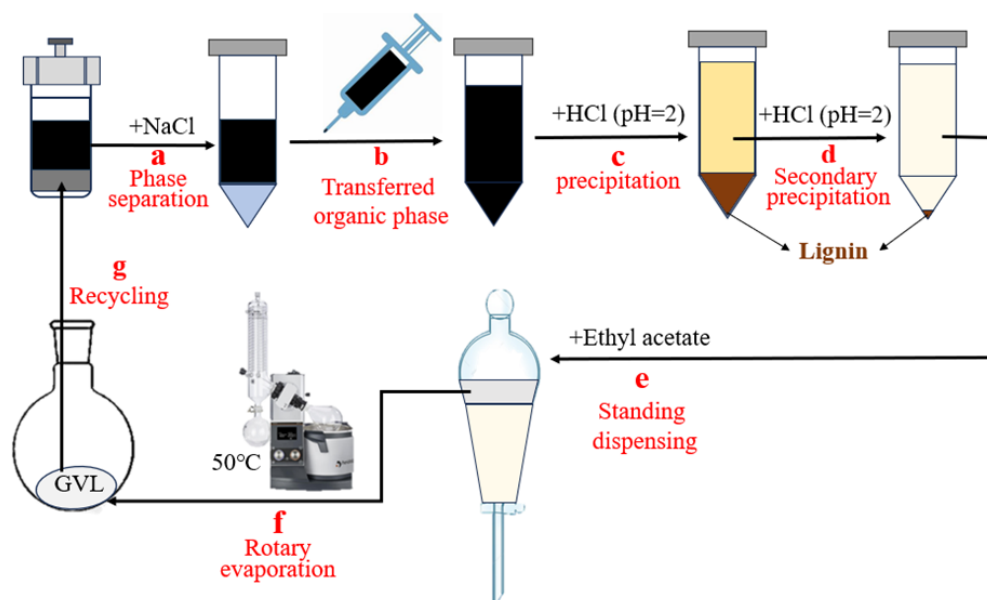


Fig. S1 Schematic illustration of recovery and reuse of GVL.

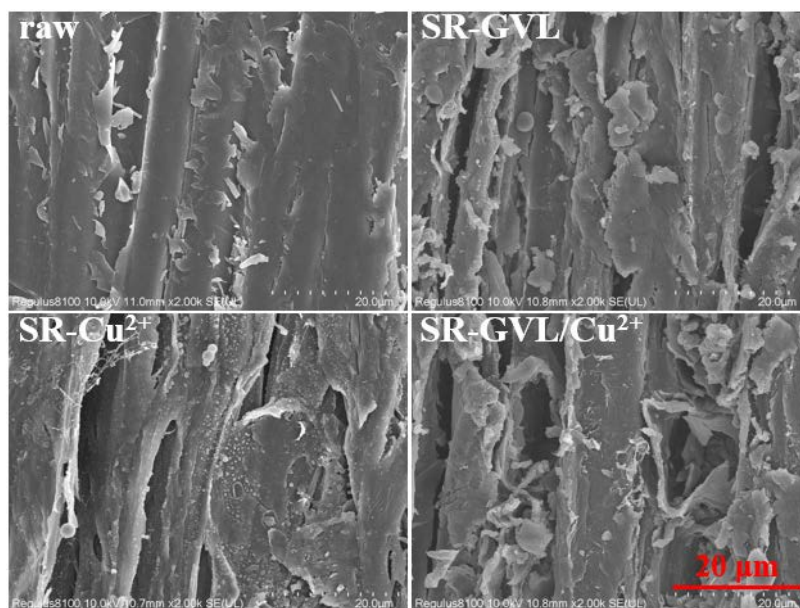


Fig. S2 SEM micrographs of raw eucalyptus and solid residues.

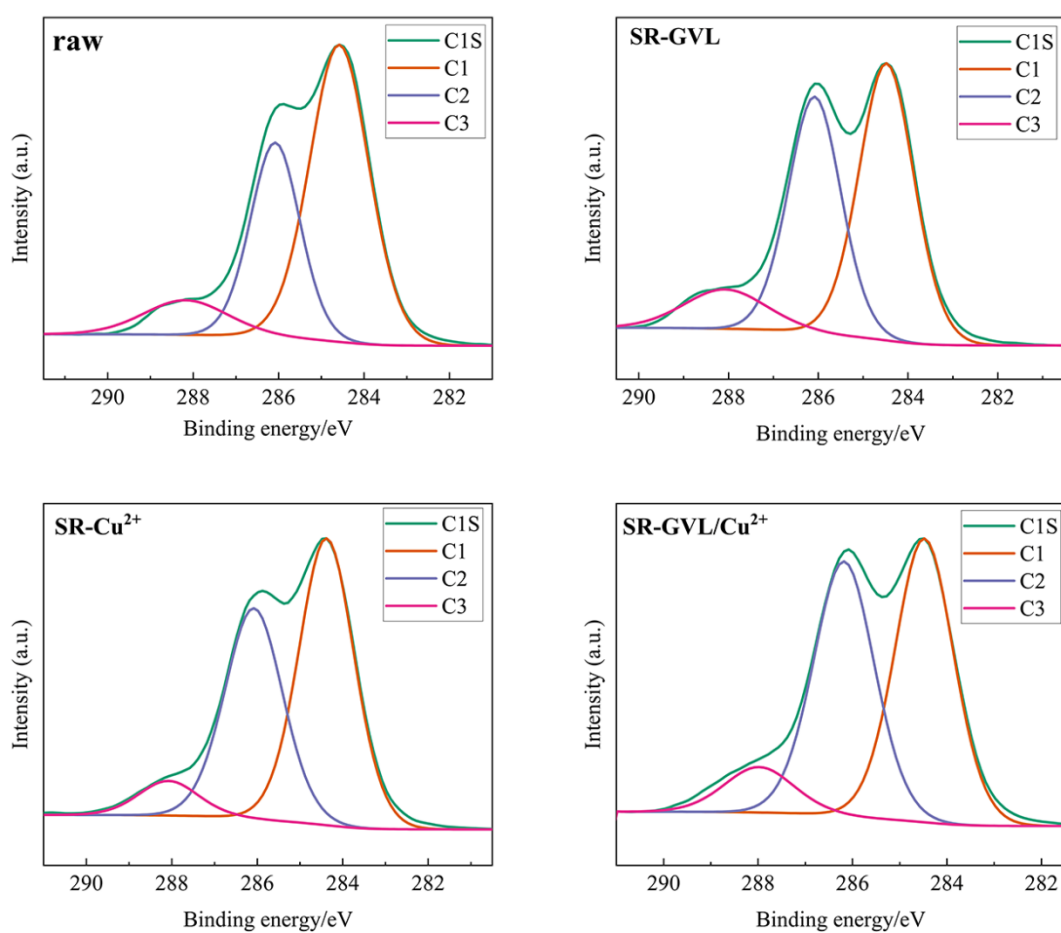


Fig. S3 C1S spectrogram of raw eucalyptus and solid residues.

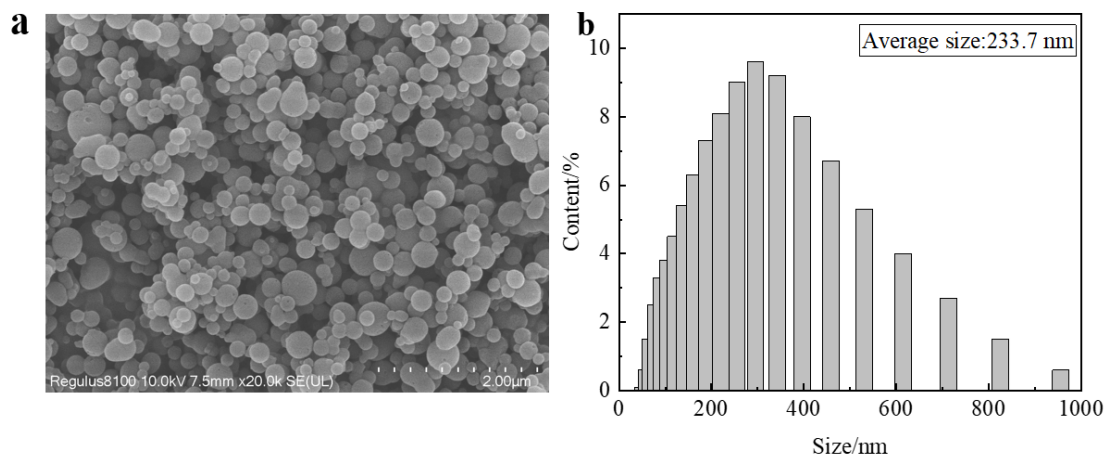


Fig. S4 Micromorphology (a) and particle size distribution (b) of lignin obtained by pretreatment of the GVL/CuCl₂ system under optimal conditions.