

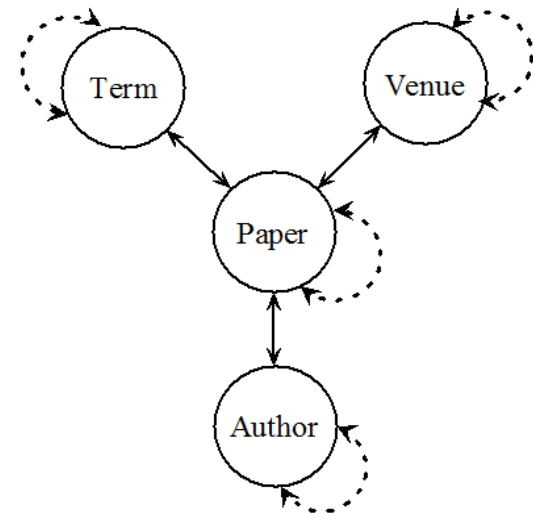
# Meta-path-based outlier detection in heterogeneous information network

**Lu LIU, Shang WANG**

Frontiers of Computer Science, DOI: [10.1007/s11704-018-7289-4](https://doi.org/10.1007/s11704-018-7289-4)

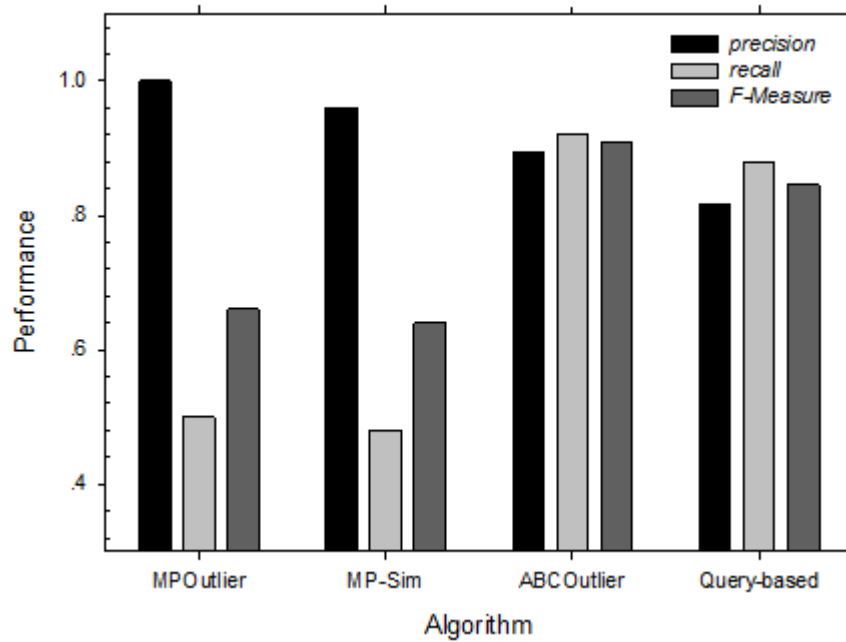
# Problems & Ideas

- Problems of outlier detection in heterogeneous network
  - How to calculate the similarity between different types of objects.
  - How to make full use of the semantic information in HIN is another challenging problem.
- Ideas: short text similarity
  - Considering the closeness degree of the short texts.
  - Calculating the reachable probability between source node and target node by using meta-path in heterogeneous information network.
- Our proposed bibliographic network schema.



# Main Contributions

- The performance on AMiner



- The performance on Movies dataset

