

Appendix B

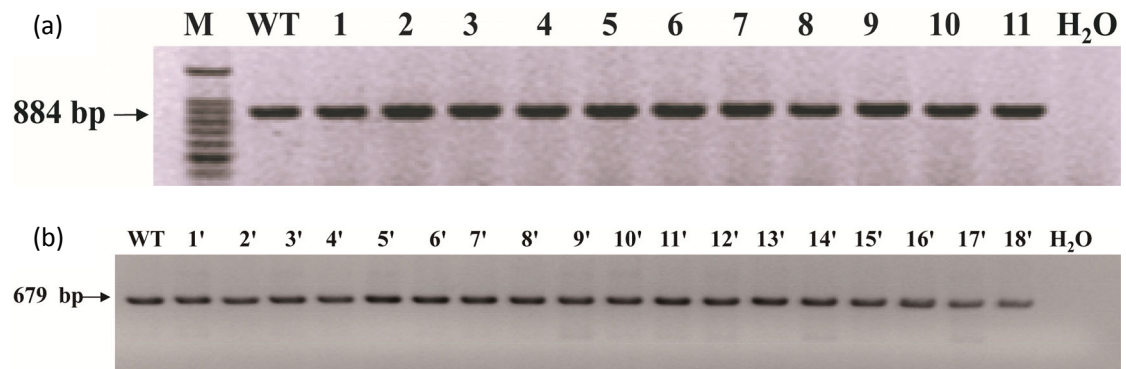


Fig. S1 Preliminary identification of LF promoter mutations by PCR. (a) 1–11 represents the genome of the newborn mice from the first microinjection. WT represents the genome of Kunming wild-type mice. M represents 100 bp DNA Ladder Marker; (b) 1'–18' represents the genomes of the newborn mice of the second microinjection.

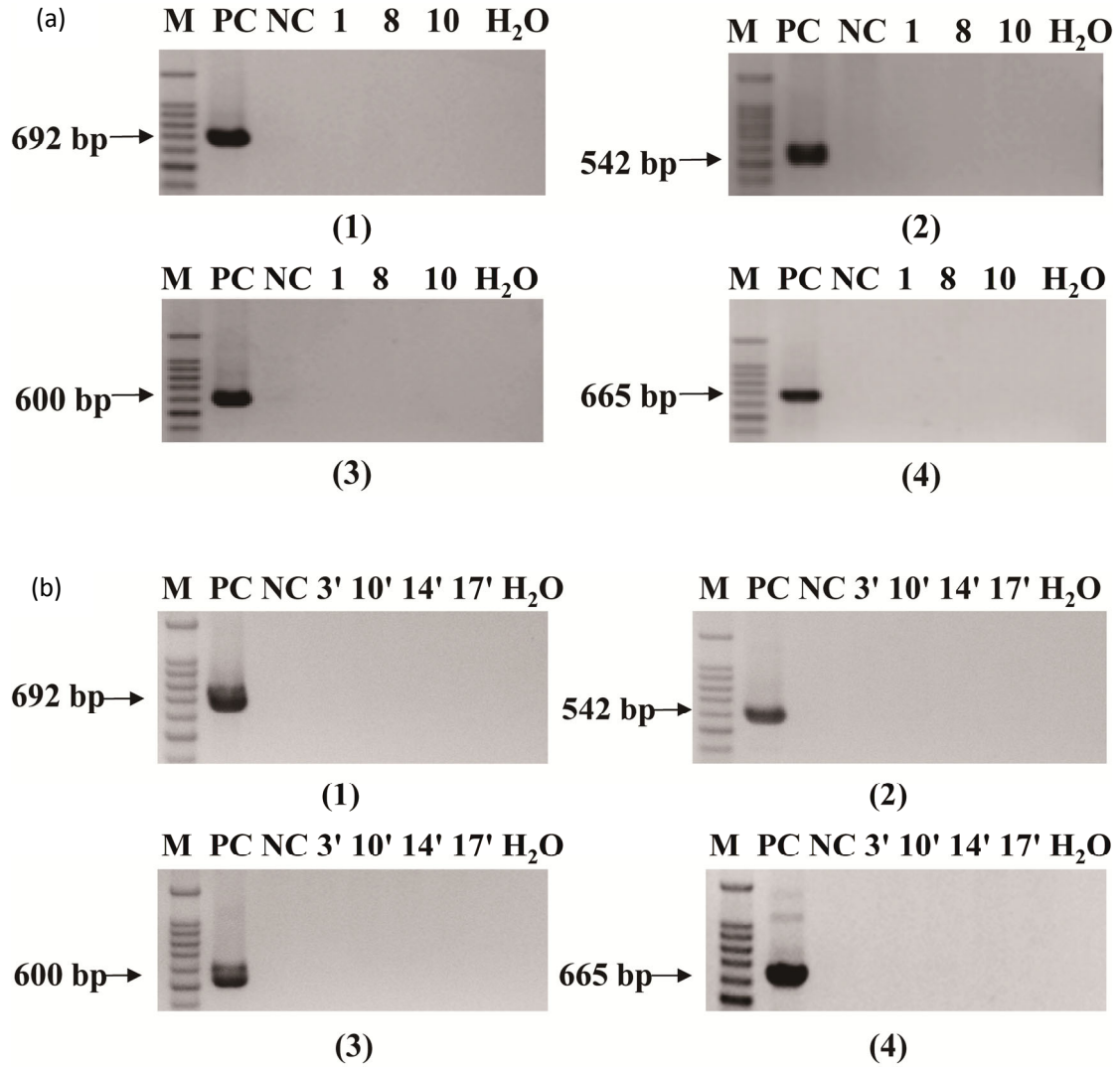


Fig. S2 Plasmid integration analysis. The DNA template for the positive control (PC) is plasmid pX330-EF1 α -sgRNA1-1 and the DNA template for the negative control (NC) is the genome derived from Kunming wild-type mice. M represents 100 bp DNA Ladder Marker. The DNA templates for 1, 8, and 10 are the genomes of the newborn mice from the first microinjection (a), and the DNA templates for 3', 10', 14', and 17' are the genomes of the newborn mice from the second microinjection (b).