

Appendix J Testing of the unexpected presence of the structural variation (two special boundaries of Dup-1-5' and Dup-2-5', and Dup-1-3' and Dup-2-3' sequences) in hyperpigmented breeds. The length of the PCR product with the Dup CNV-1-3'/Dup CNV-2-3' primers is 700 bp; the length of the PCR product with the Dup CNV-1-5'/Dup CNV-2-5' primers is 200 bp. DH: Dehong jungle fowl; WJ: Silkie; JH: Jinhu Silkie; BLH: White Leghorn; Am: Cobb chicken; YX: Youxi chicken; GS: Gushi chicken; WH: Wuhui chicken; NTC: negative control. Only the FM breeds (Silkie and Jinhu Silkie chickens) show the specifically amplified product.

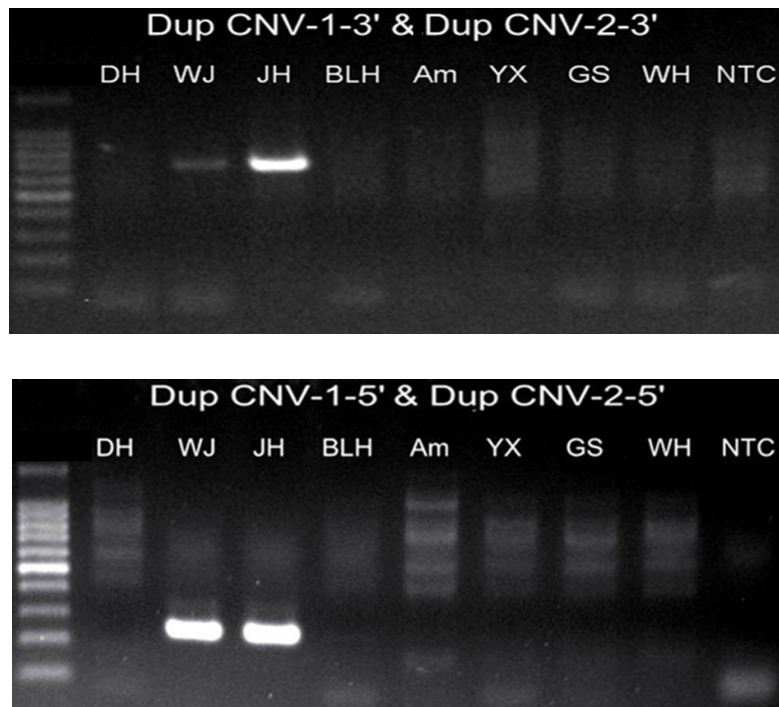


Fig. S4 Gel electrophoresis of break-join detection