

ORGANIC CARBON STOCKS IN A SILTY TEXTURED SOIL FOLLOWING REINTEGRATION OF A 20 YEARS OLD *MISCANTHUS* × *GIGANTEUS* SITE INTO A CROP ROTATION

Lisa ESSICH (✉)¹, Reiner RUSER¹, Jens HARTUNG², Anne HANEMANN¹, Meike GASSNER¹, Liam OBERDORFER¹, Jörn BREUER³, Jürgen RECKNAGEL³, Helmut NUßBAUMER³, Torsten MÜLLER¹

¹ Institute of Crop Science, Department Fertilization and Soil Matter Dynamics, University of Hohenheim, 70599 Stuttgart, Germany.

² Institute of Crop Science, Biostatistics Unit, University of Hohenheim, 70599 Stuttgart, Germany.

³ Center for Agricultural Technology Augustenberg (LTZ), 76227 Karlsruhe, Germany.

SUPPLEMENTARY MATERIALS

Table S1 Management measures and soil sampling dates in the reintegration treatment between 2015 and 2021

2015	2016	2017	2018	2019	2020	2021
Soil samples on Apr. 30	Soil samples on Apr. 8	Soil samples on Apr. 6	Milling on Mar. 26	Soil samples on May. 2	Seedbed preparation with cultivating harrow on Mar. 17	Soil samples on Mar. 21
Harvest miscanthus on Jul. 31	First cut alfalfa clover grass mixture on Jul. 13	Harvest Winter wheat on Jul. 21	Seeding spring barley on Mar. 26	Harvest winter rye on Jul. 24	Barley on Mar. 17	
Wing coulter cultivator (flat) on Aug. 5	Second cut alfalfa clover grass mixture on Sep. 28	Winter: plow	Soil samples on Apr. 24	Winter: plow	Harvest spring barley on Jul. 24	
Cultivator on Aug. 28	Plow on Nov. 14		Harvest spring barley on Jul. 23		Stubble cultivation with shallow cultivator on Jul. 24	
Milling on Aug. 28	Cultivator on Nov. 15		Stubble cultivation with shallow cultivator on Jul. 23		Disc harrow on Oct. 17	
Seeding alfalfa clover grass mixture on Aug. 28	Seed winter wheat on Nov. 15		Plow on Oct. 30		Seeding alfalfa clover grass mixture on Oct. 19	
			Seeding winter rye on Oct. 30			

Note: Plowing depth maximum 0.2 m, stubble cultivation maximum 0.1 m

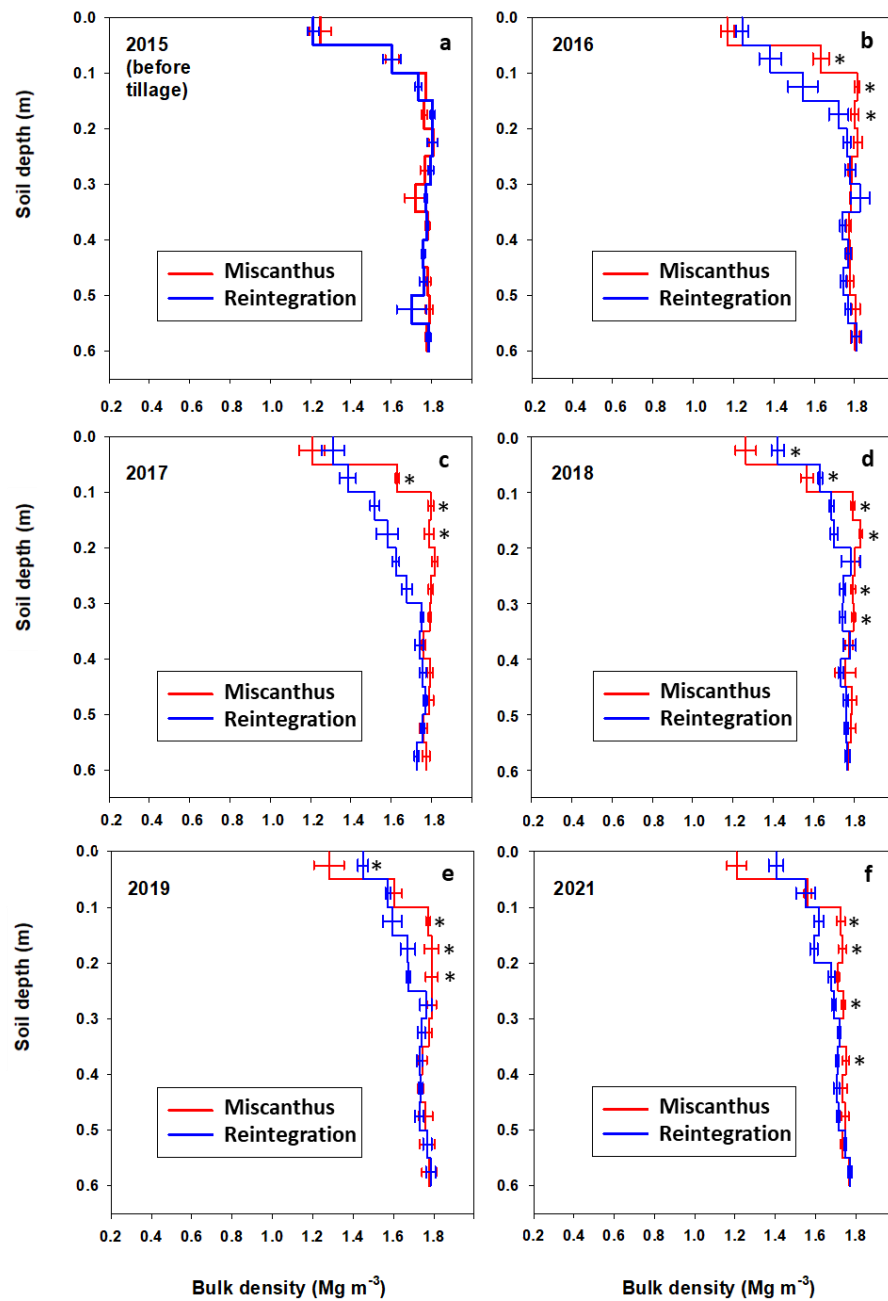


Fig. S1 Bulk density ($n = 4$, mean \pm standard error) in different soil depths in 2015–2021 (except 2020). Asterisks indicate statistically significant differences between the means of the treatments within a depth (LSD test, $\alpha = 0.05$).

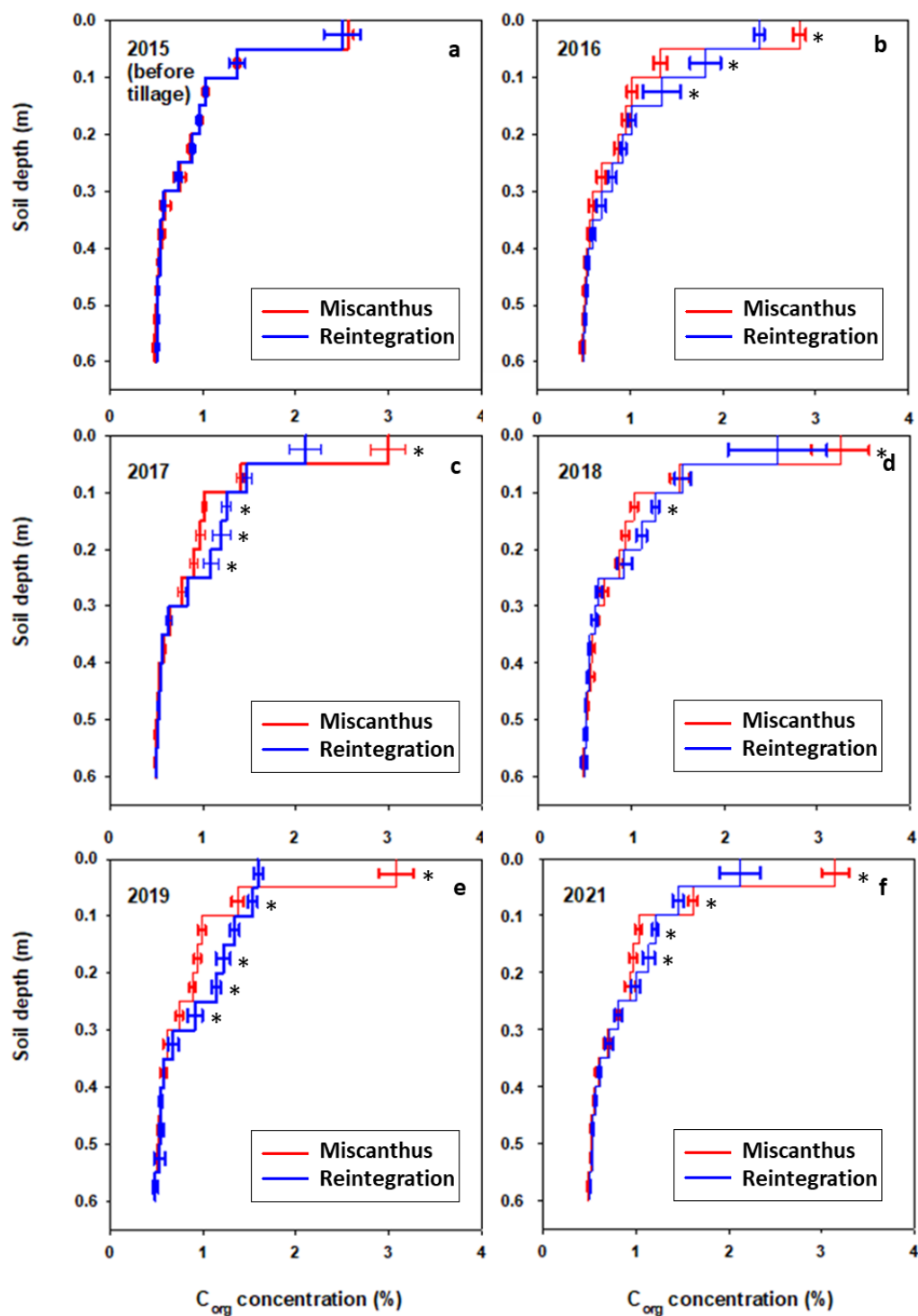


Fig. S2 Corg concentration ($n = 4$, mean \pm standard error) in different soil depths in 2015–2021 (except 2020). Asterisks indicate statistically significant differences between the means of the treatments within a depth (LSD test, $\alpha = 0.05$).

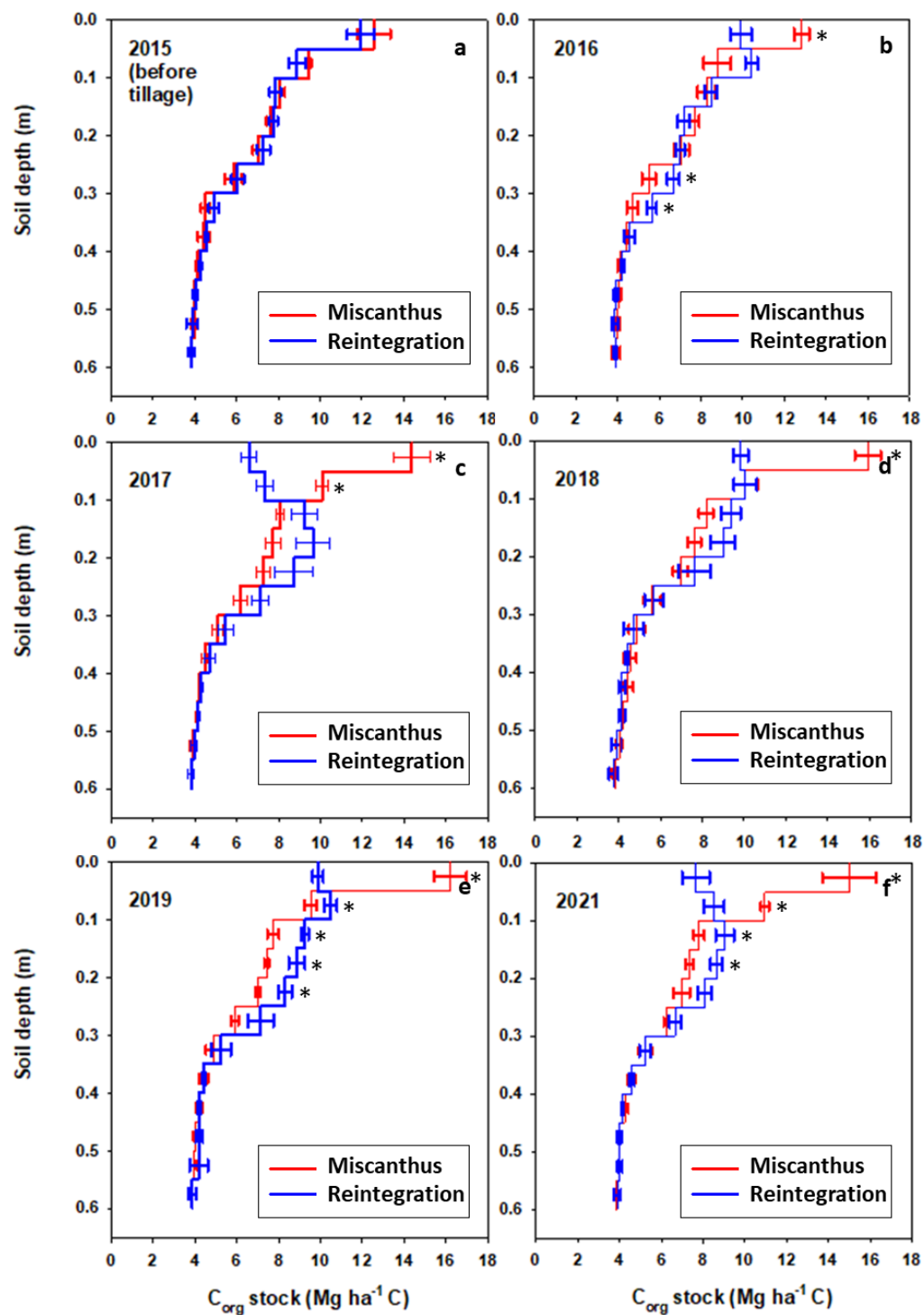


Fig. S3 C_{org} stocks ($n = 4$, mean \pm standard error) in different soil depths in 2015–2021 (except 2020). Asterisks indicate statistically significant differences between the means of the treatments within a depth (LSD test, $\alpha = 0.05$).