



Lithofacies palaeogeography, depositional model and shale gas potential evaluation in the O₃-S₁ Wufeng-Longmaxi Formation in the Sichuan Basin, China

Xiang-ying Ge^{a, b}, Chuan-long Mou^{a, b, c, *}, Xin Men^d, Qian Hou^{a, b}, Bin-song Zheng^c, Wei Liang^{a, b}

^a Chengdu Centre, China Geological Survey (Geosciences Innovation Center of Southwest China), Chengdu 610081, China

^b Key Laboratory of Sedimentary Basin and Oil and Gas Resources, Ministry of Natural Resources, Chengdu 610081, China

^c Shandong University of Science and Technology, Qingdao 266590, China

^d Key Laboratory of Metallogenic Prediction of Nonferrous Metals and Geological Environment Monitoring (Ministry of Education), School of Geosciences and InfoPhysic, Central South University, Changsha 410083, China

^e School of Geoscience and Technology, Southwest Petroleum University, Chengdu 610500, China

ARTICLE INFO

Article history:

Received 12 February 2023

Received in revised form 24 September 2023

Accepted 8 November 2023

Available online 29 September 2024

Keywords:

Shale gas
 Marine organism
 Volcanic eruption
 Sedimentary facies
 Lithofacies palaeogeography
 Depositional model
 Petroleum geological survey engineering
 Wufeng-Longmaxi Formation
 Sichuan Basin

ABSTRACT

The black shales of Wufeng and Longmaxi Formation (Late Ordovician-Early Silurian period) in Sichuan Basin are the main strata for marine shale gas exploration, which have a yearly shale gas production of $228 \times 10^8 \text{ m}^3$ and cumulative shale gas production of $919 \times 10^8 \text{ m}^3$. According to the lithological and biological features, filling sequences, sedimentary structures and lab analysis, the authors divided the Wufeng/Guanyinqiao and Longmaxi Formations into shore, tidal flat, shoal, shallow water shelf and deep water shelf facies, and confirmed that a shallow water deposition between the two sets of shales. Although both Formations contain similar shales, their formation mechanisms differ. During the deposition of Wufeng shale, influenced by the Caledonian Movement, the Central Sichuan and Guizhou Uplifts led to the transformation of the Sichuan Basin into a back-bulge basin. Coinstantaneous volcanic activity provided significant nutrients, contributing to the deposition of Wufeng Formation black shales. In contrast, during the deposition of Longmaxi shale, collisions caused basement subsidence, melting glaciers raised sea levels, and renewed volcanic activity provided additional nutrients, leading to Longmaxi Formation black shale accumulation. Considering the basic sedimentary geology and shale gas characteristics, areas such as Suijiang-Leibo-Daguan, Luzhou-Zigong, Weirong-Yongchuan, and Nanchuan-Dingshan are identified as key prospects for future shale gas exploration in the Wufeng-Longmaxi Formations.

©2025 China Geology Editorial Office.

1. Introduction

In recent years, shale gas exploration in South China has deepened significantly. In 2021, China's annual shale gas production reached $228 \times 10^8 \text{ m}^3$, with cumulative production totaling $919 \times 10^8 \text{ m}^3$. The potential of the black shales in Wufeng-Longmaxi Formations (Late Ordovician-Early Silurian) in Sichuan Basin is huge. By the end of 2020, there are seven proven shale gas fields in the Wufeng-Longmaxi Formations in Sichuan Basin with geological reserves of

$2.0 \times 10^{12} \text{ m}^3$ and recoverable reserves of about $4700 \times 10^8 \text{ m}^3$. They represent crucial horizons for future natural gas production growth and exploration in China (Guo XS et al., 2014, 2016, 2019; Ma YS et al., 2018; Zou CN et al., 2015, 2022).

Many studies have been conducted on the sedimentary facies and models of the black shales of Wufeng and Longmaxi Formations in Late Ordovician and Early Silurian. It is widely accepted that these formations were predominantly deposited in deep water shelf facies. Based on shale lithology, mineral composition, biological fossils, micromorphology, and logging responses, various microfacies types have been identified (Zou CN et al., 2015; Mou CL et al., 2016, 2023; Pu BL et al., 2020; Shi ZS et al., 2022; Wang HY et al., 2023; Guo W et al., 2022; Hu ZQ et al., 2022). The sedimentary models of the black shale can be divided into the inheriting standing water shelf center, the

First author: E-mail address: gexiangying-2006@163.com (Xiang-ying Ge).

* Corresponding author: E-mail address: cdmchuanlong@163.com (Chuan-long Mou).

Literary editor: Li-qiong Jia

doi:10.31035/cg20230015

2096-5192/© 2025 China Geology Editorial Office.

Copyright © 2025 Editorial Office of China Geology. Publishing services by Elsevier B.V. on behalf of KeAi Communications Co. Ltd.

This is an open access article under the CC BY-NC-ND License (<http://creativecommons.org/licenses/by-nc-nd/4.0/>).

inheriting standing water shelf slope, upwelling sedimentary models (Wang YM et al., 2018) and the shallow water onlap model (Chen L et al., 2023).

The black shales of the Wufeng-Longmaxi Formations are known for their substantial thickness and consistent distribution, often referred to collectively as the “Big Longmaxi Formation” in shale gas exploration. However, these formations actually consist of two distinct sets. Between these sets lies a thin layer of shallow water shelf facies, commonly referred to as the Guanyinqiao Formation or Guanyinqiao Member. This formation or member is widely distributed in Sichuan Basin and is characterized by the presence of the cold water Hirnantia Fauna, which holds significant environmental importance. The Hirnantia Fauna occurred and flourished in the ecological location of benthic assemblage BA2–3, mainly BA3, which was not deeper than 60 m (Fang YT et al., 1993; Rong JY, 1984; Rong JY and Chen X, 1987). The lithological features also indicate that the sedimentary water of Guanyinqiao Formation is shallower than that of Wufeng and Longmaxi Formations (Chen C, 2018; Li GP et al., 2009; Liu W et al., 2012; Mou CL et al., 2014; Wang YC, 2016; Wang YC et al., 2015, Su XH, 2017; Ge XY, 2020). This confirms that although both the Wufeng and Longmaxi Formations consist of black shales, their formation processes and the primary factors controlling organic matter enrichment differ significantly.

To better understand the organic matter enrichment mechanism of black shales in Wufeng and Longmaxi Formations, the authors selected continuous Wufeng-Longmaxi Formations shale section and drills to conduct detailed sedimentary facies and lithofacies paleogeography studies. The goal of this study was to identify the primary controlling factors of organic matter enrichment in these black shales and provide a more solid theoretical foundation for the exploration of shale gas in China.

2. Geological setting

Sichuan Basin belongs to the Upper Yangtze Block structurally, which is a superposition basin developed on the basis of the Upper Yangtze Craton Basin. According to the regional structural characteristics, present tectonic features and previous research (Bureau of Geology and Mineral Resources of Sichuan Province, 1991), based on the boundary of Huaying Mountain and Longquan Mountain faults, the basin is divided into three tectonic zones and subdivided into six secondary tectonic zones, which are high dipping anticline belt in eastern Sichuan, lower gentle anticline belt in Southern Sichuan, ancient uplift belt in southwestern Sichuan, lower flat belt in central Sichuan, broad gentle anticline belt in northern Sichuan, lower uplift belt in western Sichuan (Wang XP et al., 2015; Fig. 1). In the long process of tectonic and sedimentary evolution, Sichuan Basin has experienced multi-stage and multi-direction marginal deep fault activities, which reflects the characteristics of multi-tectonic cycles.

Since Nanhua Period, the Yangtze Block started making

its way into the cratonic basin stages (Huang FX et al., 2011). During the Sinian-Silurian period, the Middle and Upper Yangtze Block experienced two evolutionary phases that changed from extension to compression mechanism. In Cambrian the study area deposited lots of carbonates and formed the carbonate ramp and then evolved into a rimmed carbonate platform in Early Ordovician (Xu XS et al., 2001; Mou CL and Xu XS, 2010; Mou CL et al., 2011, 2014, 2019; Hu FX et al., 2011; Chen HD et al., 2009; Yu Q et al., 2011; Yan DT et al., 2011; Yan JF et al., 2010). In the Middle-Late Ordovician, as the compression and collision between the Yangtze and Cathaysia blocks intensified, the Central Sichuan, Central Guizhou, and Xuefeng uplifts constantly expanded, and the sea level rose relatively. The rimmed carbonate platform developed in Middle-Upper Yangtze Area was submerged and transformed into a carbonate ramp, and finally developed into the back-bulge basin confined by the marginal uplifts (Mou CL and Xu XS, 2010, Mou CL et al., 2011, 2014, 2015; Liu W et al., 2010, 2012; Wang JP et al., 2012; Ge XY, 2020; Ge XY et al., 2021) and the lithology changed from carbonate rocks to the black shales.

3. Stratigraphical features

The black shales of Wufeng-Longmaxi Formations span two epochs-Ordovician and Silurian periods, which are internationally divided by graptolite biozone. Wufeng, Guanyinqiao and Longmaxi Formations across Katian, Hirnantian, Rhudannian, Ellonian and Trechian five stages, and 13 graptolite biozones (Chen X et al., 2006, 2015, 2017, 2018; Fan JX et al., 2011).

The Katian stage contains three graptolite biozones, which are *Foliomena-Nankinolithus* zone, *Dicellograptus complexus* zone and *Paraorthograptus pacificus* zone from the bottom up. The *Paraorthograptus pacificus* zone is further divided into three subzones: *Lower Subzone*, *Tangyagraptus typicus* and *Diceratograptus mirus*. The Hirnantian stage contains two graptolite zones. The bottom is the *Normalograptus extraordinarius* graptolite biozone, which corresponds to the top part of the Wufeng Formation, and the upper is the *Persculptograptus persculptus* graptolite biozone, which corresponds to the black shale at the bottom of Longmaxi Formation. The Rhudannian stage contains four graptolite biozones, which are *Akidograptus ascensus*, *Parakidograptus acuminatus*, *Cystograptus vesiculosus* and *Coronograptus cyphus* in ascending order. The Ellonian stage consists of three graptolite zones, namely the *Demirastrites triangulatus*, *Lituigraptus convolutus* and *Stimulograptus sedgwickii* from the bottom up, and the Trechian stage contains two graptolite zones, which are *Spirograptus guerichi* and *Spirograptus turriculatus* (Fig. 2). According to the present data, only the *Spirograptus guerichi* zone at the bottom of Trechian stage is found in the black shales of Longmaxi Formation in Yangtze Platform. In order to facilitate the division and comparison of strata of Ordovician and Silurian black shales, Dr. Xu Chen used WF and LM to refer to the corresponding graptolite

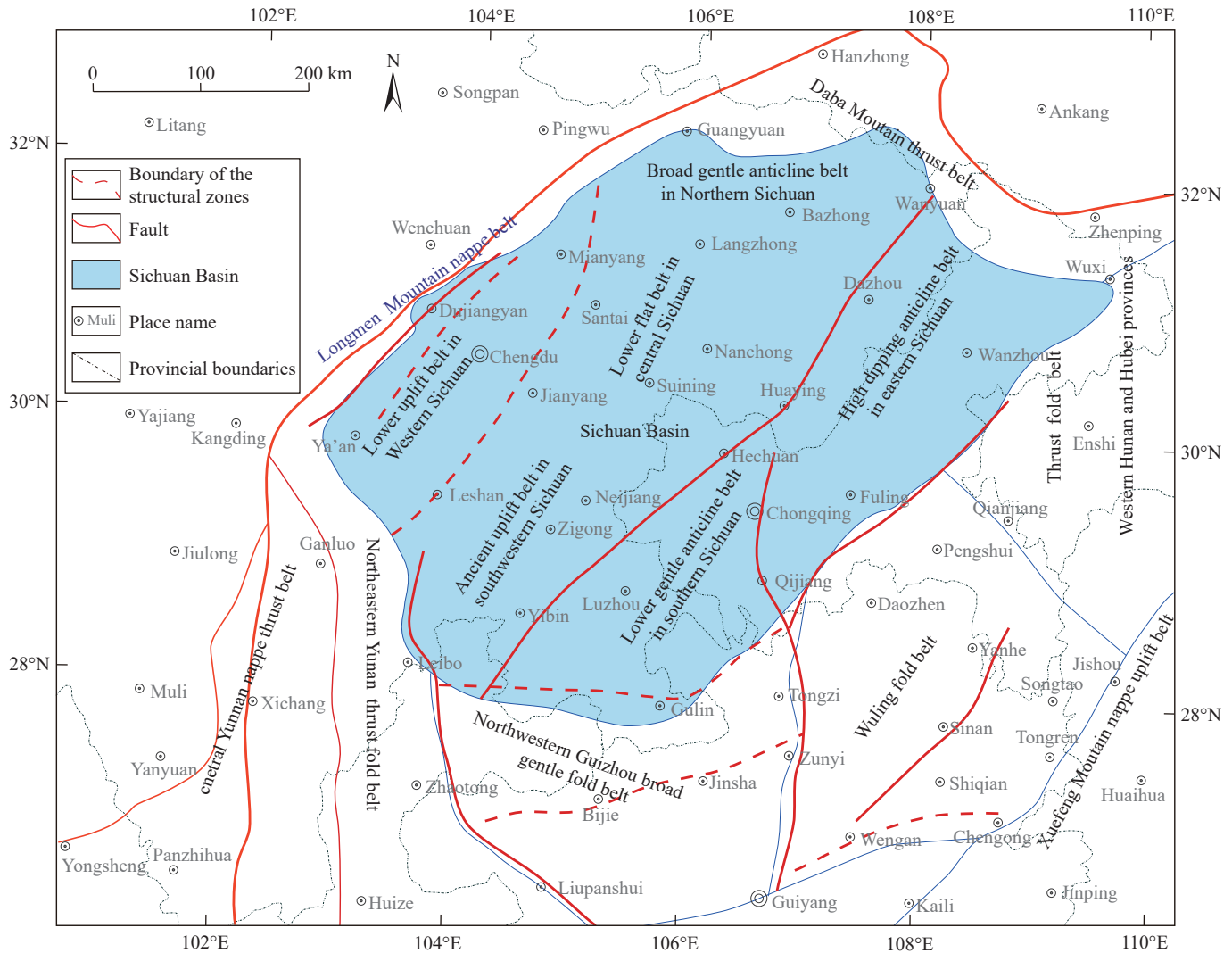


Fig. 1. Distribution of major faults and division of structural areas of Sichuan Basin, China.

biozone (Chen X et al., 2015, 2017), and then used to divide and compare the two sets of black shales of Wufeng Formation and Longmaxi Formation. For example, WF3 was called “Wu threemember”, that is, the third graptolite biozone of Wufeng Formation. LM2 is called “Long two member”, that is, the second graptolite biozone of Longmaxi Formation.

The lithological features of the Wufeng, Guanyinqiao and Longmaxi Formations are summarized from bottom to top as follows:

The Wufeng Formation, which is characterized by black carbonaceous shale and siliceous shale, is widely distributed in the Yangtze area. In eastern Sichuan, this formation is in conformable contact with the underlying Linxiang Formation or Jianchaogou Formation and overlying Guanyinqiao Formation, generally 0.3 m to 30 m thick, and is mainly composed of graptolites, a few brachiopods and radiolarian. There are some gray-white, brown-yellow and purple-gray bentonites distributed among these shales, with single-layer thickness ranging from 0.1–40 cm (Ge XY et al., 2019, 2021; Ge XY, 2020).

The Guanyinqiao Formation is a set of shell facies deposition, which is mainly composed of biological

limestone, calcareous siltstone, mudstone or calcareous dolomite, and is a remarkable sign for division of Wufeng and Longmaxi Formations. The Guanyinqiao Formation, mainly a few dozen centimeters thick with the largest more than ten meters, is characterized by the Hirnantia-Dalmanitina Fauna (Rong JY and Chen X, 1987; Zhou MK et al., 1993; Zhan RB et al., 2010).

The Longmaxi Formation, is in conformable contact with the underlying Guanyinqiao Formation and overlying Luoreping Formation in western Sichuan, Xiaoheba Formation in eastern Sichuan and Shiniulan Formation in Southwestern Sichuan. The Longmaxi Formation can be divided into two parts by lithology (Fig. 3). The lower part of the Longmaxi Formation, is mainly dominated by black carbonaceous shale, and siliceous shale interbedded with gray-black calcareous mudstone. The thickness of this formation is 10–200 m, accounts for 10%–30% of the sedimentary thickness of Longmaxi Formation. The lower part black shales of Longmaxi Formation and the black shale of Wufeng Formation together constitute the black shale with relatively stable thickness, which is the key horizon of shale gas exploration in Sichuan Basin at present. The lithology of

Chronostratigraphy			Graptolite biozone		Age	Formation	
System	Series	Stage					
Silurian	Llandovery	Trechian	LM9 <i>Spirograptus guerichi</i>		438.49 Ma	Longmaxi Fm.	
			LM8 <i>Stimulograptus sedgwickii</i>		438.76 Ma		
		Ellonian	LM7 <i>Lituigraptus convolutus</i>		439.21 Ma		
			LM6 <i>Demirastrites triangulatus</i>		440.77 Ma		
			LM5 <i>Coronograptus cyphus</i>		441.57 Ma		
		Rhudanian	LM4 <i>Cystograptus vesiculosus</i>		442.47 Ma		Eospirifer
			LM3 <i>Parakidograptus acuminatus</i>		443.40 Ma		
			LM2 <i>Akidograptus ascensus</i>		443.83 Ma		
			LM1 <i>Metabolograptus? persculptus</i>		444.43 Ma		
		Ordovician	Upper Ordovician	Hirnantian	WF4 <i>Metabologr.extraordinarius</i>		445.16 Ma
WF3 <i>Pararthograp.pacificus</i>					Manosia		
<i>Diceratogr.mirus</i>				445.37 Ma			
<i>Tangyagraptus typicus</i>				446.34 Ma			
Katian	Lower Subzone			447.02 Ma	Wufeng Fm.		
	WF2 <i>Dicellograptus complexus</i>			447.62 Ma			
	WF1 <i>Foliomena-Nankinolithus</i>					Linxiang Fm.	

Fig. 2. Graptolite biozones of Upper Ordovician-Lower Silurian (after Chen X et al., 2015, 2017).

the upper part of Longmaxi Formation which is a non-black rock series, is mainly grey-green, yellow-green mudstone, silty mudstone and siltstone, usually interbedded with argillaceous limestone lens.

4. Types of sedimentary facies

Based on lithological, sequential, sedimentary structural, and biotic assemblage characteristics, the Wufeng, Guanyinqiao, and Longmaxi Formations in the Sichuan Basin were classified into five distinct facies types: Tidal flat,

shoreline, shoal, shallow-water shelf, and deep-water shelf.

4.1. Tidal flat facies

The tidal flat facies developed in gently sloping coastal areas, where cyclic tidal interactions played a dominant role, and is mainly composed of fine clastic material (clay, silt) and carbonate rock. The Wufeng and Longmaxi Formations are typified by gray-gray black silty sandstone and argillaceous limestone, exhibiting distinctive bedding features including flaser bedding, wavy bedding, lenticular bedding, and small-

scale flow ripple laminations. (Fig. 4).

The tidal flat facies of Guanyinqiao Formation is distributed in the periphery of the central Guizhou Uplift, and the lithology is composed primarily of silty limestone, silty argillaceous limestone and bioclastic mudstone. The silty content is relatively high in the nearshore area of the central Guizhou Uplift, whereas in the offshore direction, the silty content progressively decreases, giving way to an increase in muddy sediments. The tidal flat facies of the Guanyinqiao Formation is characterized by a relatively thin bedding and

lacks a discernible sedimentary structure. In terms of paleontology, the facies yields a limited fossil record, including brachiopods (Fig. 5), as well as a few specimens of lamellibranchias, trilobites, crinoids, bryozoans, and gastropods, along with calcareous algae (Li Y et al., 2005, 2008).

4.2. Shore facies

The coastal zone refers to the area between the maximum tidal surface and the wave base. Along the barrier-free clastic

Sichuan Basin and its adjacent area						
Stratigraphic subregion		Western Sichuan	Southwestern Sichuan	Southeastern Chongqing	Northern Guizhou	Northeastern Sichuan
Stratigraphic system						
Overlying strata		Liangshan Fm.	Liangshan Fm.	Liangshan Fm.	Liangshan Fm.	Liangshan Fm.
Silurian	Upper-Middle Silurian		Huixingshao Fm.	Huixingshao Fm.		
		Shamao Fm.	Daluzhai Fm.	Hanjiadian Fm.	Hanjiadian Fm.	Hanjiadian Fm.
	Lower Silurian	Luoreping Fm.	Shiniulan Fm.	Xiaoheba Fm.	Shiniulan Fm.	Xiaoheba Fm.
		Longmaxi Fm.	Longmaxi Fm.	Longmaxi Fm.	Longmaxi Fm.	Longmaxi Fm.
Ordovician	Upper Ordovician	Guanyinqiao Fm.	Guanyinqiao Fm.	Guanyinqiao Fm.	Guanyinqiao Fm.	Guanyinqiao Fm.
		Wufeng Fm.	Wufeng Fm.	Wufeng Fm.	Wufeng Fm.	Wufeng Fm.
		Linxiang Fm.	Linxiang Fm.	Jiancaogou Fm.	Linxiang Fm.	Linxiang Fm.
		Baota Fm.	Baota Fm.	Baota Fm.	Baota Fm.	Baota Fm.

Fig. 3. Lithostratigraphic units of Upper Ordovician-Lower Silurian in Sichuan Basin and adjacent areas.

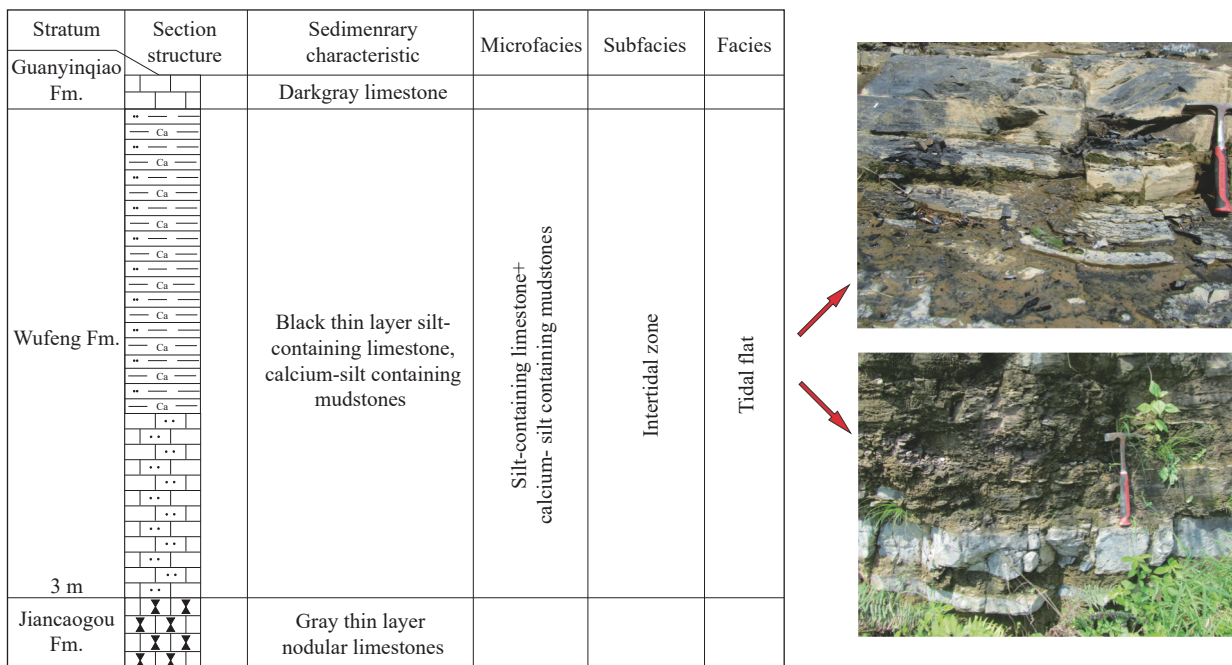


Fig. 4. Sedimentary sequence of tidal flat facies in Wufeng formation of Huanggexi section, Daguan county, Yunnan Province.

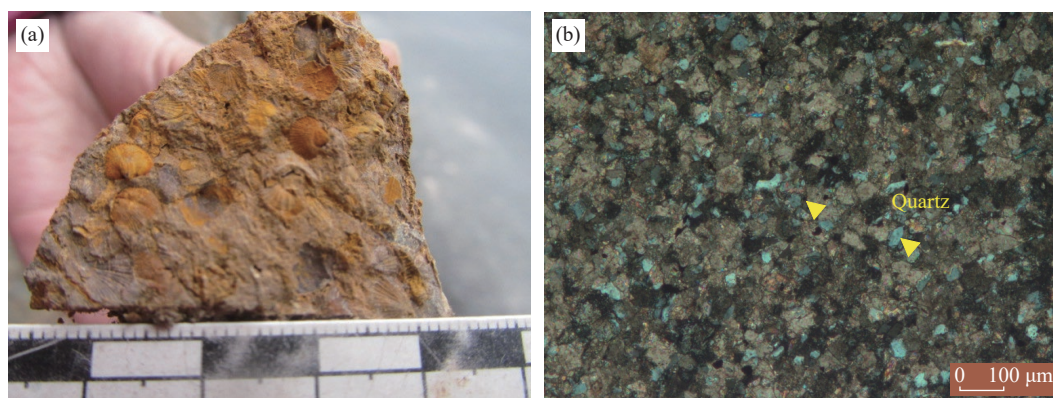


Fig. 5. Sedimentary sequence of tidal flat facies in Guanyinqiao Formation. a–Fenghuang section, Youyang county, Chongqing City; b–Xiadian section, Dejiang county, Guizhou province.

littoral, a wide coastal plain exists, which is directly influenced by wave action and is characterized by the deposition of beach sediments. Typical shore facies deposits are found in Guanyinqiao Formation around the Hannan Oldland and Central Sichuan Uplift. The Guanyinqiao Formation is relatively thin and lacks prominent sedimentary structures. The shore facies around the Central Sichuan Uplift is mainly calcareous siltstone, and the representative section is Xihe in E'bian. Small oblique bedding and parallel bedding are found in the gray-white thin-layered siltstone, and the quartz particles are predominantly circular and elliptical in shape, with only a few exhibiting subangular. The Guanyinqiao Formation in Wuxing Village, Xiaoyang Town, Zhenba County, Shaanxi Province, is dominated by pebbly sandstone, mud-containing quartz sandstone, calcareous sandstone and quartz sandstone. At the base of the formation, parallel bedding is evident, with a scale of approximately 5 mm. Additionally, a small bottom erosion structure was identified at the boundary between the Wufeng and Guanyinqiao Formations in the Fucheng section (Fig. 6).

4.3. Shoal facies

The shoal facies refers to the intertidal zone of the tidal flat facies of Guanyinqiao Formation. This environment experienced frequent fluctuations in water level, leading to the development of areas with higher hydrodynamic conditions, which ultimately gave rise to the shoal facies. In the Fenggang and Renhuai areas of northern Guizhou, the Guanyinqiao Formation is characterized by grainstones, including sparite sandclastic limestone, bioclastic limestone (featuring brachiopods and crinoids), coral reef limestone, and oolitic limestone.

The Dongkala section in Fenggang County boasts the thickest deposition of the Guanyinqiao Formation, comprising sparite sandclastic limestone and oolitic limestone. In contrast, the lower part of the Guanyinqiao Formation at the Zhongshu section in Renhuai County is characterized by calcareous mudstone with limestone nodules (Zhan RB et al., 2010), which is the main producing position of the Hirnantia Fauna. The upper portion of the Guanyinqiao Formation is comprised of bioclastic and reef limestones, which are characterized by a dominance of corals, as well as a few

trilobites, brachiopods, and bryozoans (Fig. 7).

4.4. Shallow marine shelf facies

The shallow marine shelf, situated within the photic zone (i.e., between the low-tide line and 200 m below), is characterized by a pronounced marine environment, as demonstrated by the prevalence of sunlight and benthic organisms. Sedimentological analysis reveals that this zone is dominated by fine-grained terrigenous clastic sediments and biochemical deposits, which are replete with biological remains, burrows, and bioturbation structures. Generally, it is dominated by dark mud shale with silty-fine sandstone and argillaceous limestone.

Through an examination of sedimentary sequence and structural characteristics, it becomes evident that the study area can be partitioned into two distinct depositional environments: Shallow water shelf and deep water shelf. In this investigation, The authors utilize the storm wave base as a proxy for determining the boundary between these two zones, with the upper region corresponding to the shallow water shelf and the lower region corresponding to the deep water shelf.

4.4.1. Shallow water shelf facies

The shallow water area, bounded by the storm wave base and the normal wave base, is characterized by the presence of storm deposits. The shallow-water shelf is characterized by a lithological assemblage dominated by gray-green to gray-dark carbonaceous silty mudstone, which occasionally yields thin intervals of layered gray muddy siltstone, silty mudstone, or argillaceous limestone. The sedimentary structures observed in this zone include horizontal bedding, symmetry-asymmetric ripples (Fig. 8), and small-scale ripple lamination or cross-bedding.

The lithology of shallow water facies in the Wufeng Formation is composed of gray, dark gray carbon-containing calcareous mudstone, carbon-containing silty mudstone, carbon-containing siltstone, dolomite-silt containing carbonaceous mudstone. In the Weixin, Wuchuan, and Dejiang regions, dark gray carbonaceous calcareous mudstone and carbonaceous silty mudstone predominate, whereas in the northern sector proximal to the Central Guizhou Uplift,

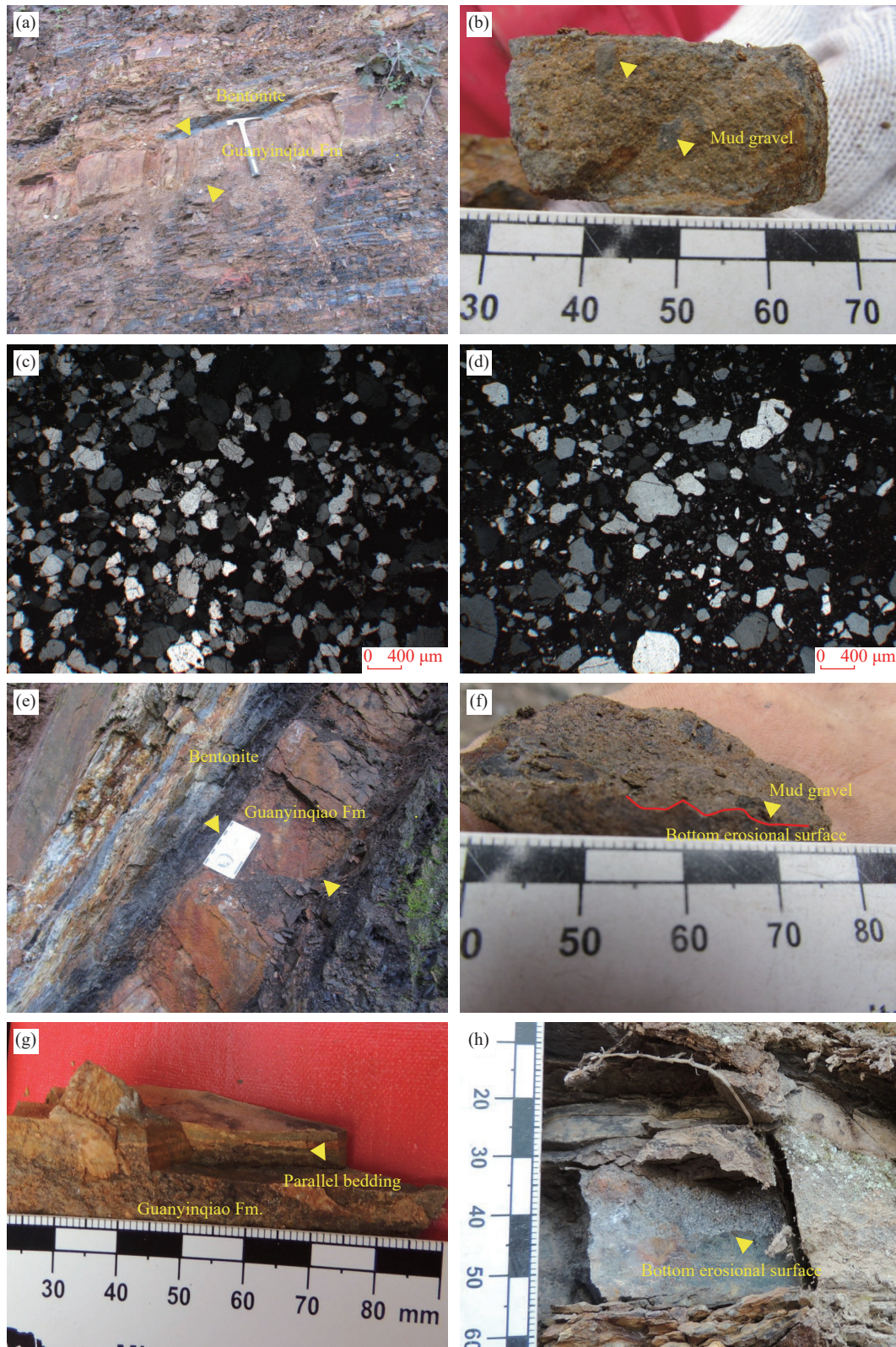


Fig. 6. Characteristic features of shore facies in Guanyinqiao Formation. a–thick bedded pebbly sandstone in Liangbai, Zhenba County; b–mud gravel in the quartz sandstones in Fucheng section, Nanzhen County; c–quartz siltstones in Fucheng section, Nanzhen County; d–quartz sandstones in Liangbai section, Zhenba County; e–boundary of Wufeng and Guanyinqiao Formations in Wuxing section, Zhenba County; f–bottom erosion structure between the Wufeng and Guanyinqiao Formations in Shuanghui section, Wangcang County; g–parallel bedding in sandstones of Guanyinqiao Formation in Wuxing section, Zhenba County; h–bottom erosion structure at the bottom of Guanyinqiao Formation in Fucheng section, Nanzheng County.

carbonaceous calcareous mudstone or argillaceous limestone are the primary lithofacies.

The lithology of shallow water facies in the Guanyinqiao Formation is composed of dark gray silt-containing mudstone,

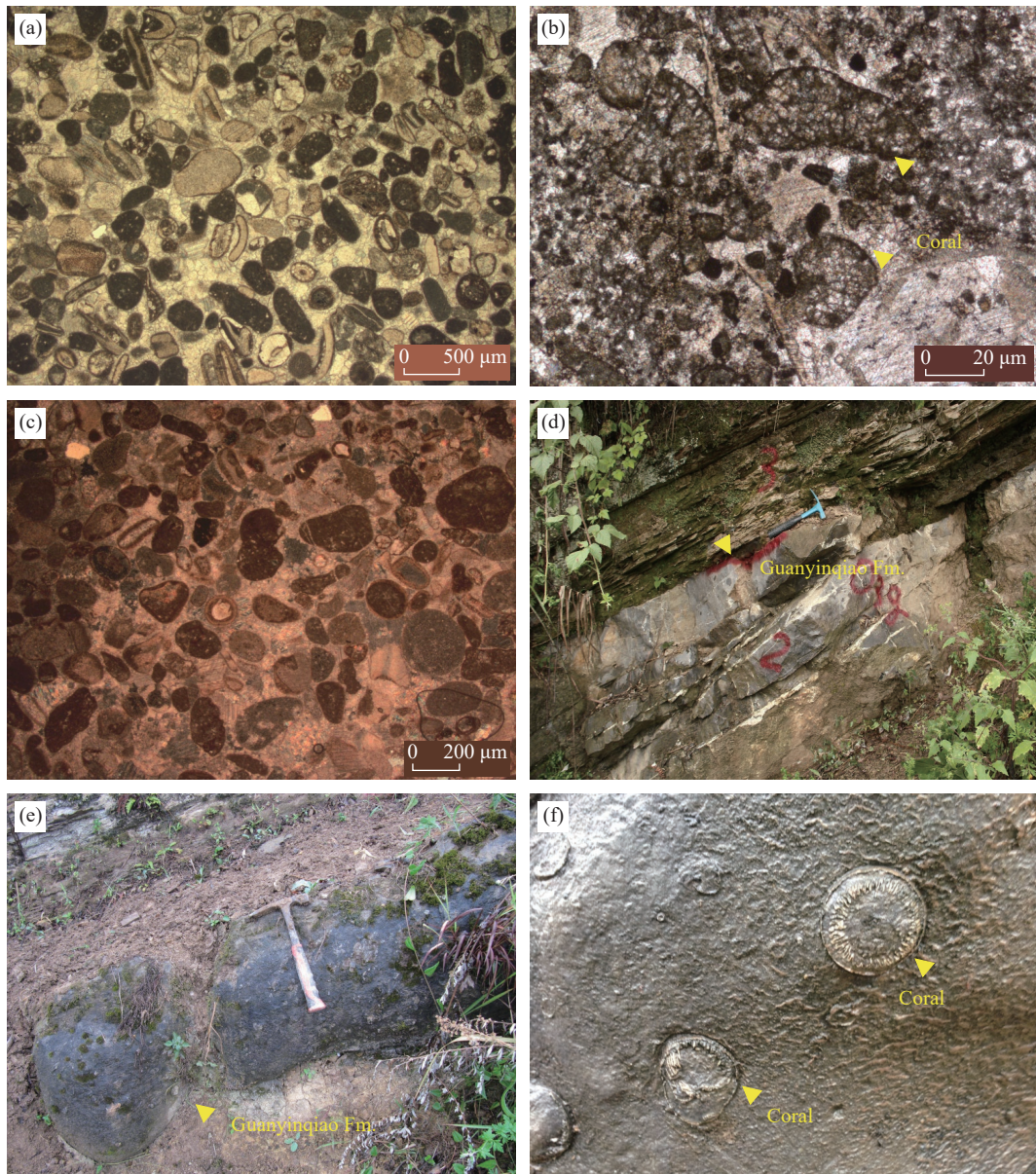


Fig. 7. Characteristic features of shoal facies in Guanyinqiao Formation. a–oolitic limestone of Guanyinqiao Formation in Dongkala section, Fenggang County; b–coral developed in the biological limestones of Guanyinqiao Formation in Zhongshu section, Renhuai County; c–oolitic limestone of Guanyinqiao Formation in Yonghe section, Fenggang County; d–boundary of Wufeng, Guanyinqiao and Longmaxi Formations in Yonghe section, Fenggang County; e– macroscopic character of the Guanyinqiao Formation in Zhongshu section, Renhuai County; f– corals of the Guanyinqiao Formation in Zhongshu section, Renhuai County.

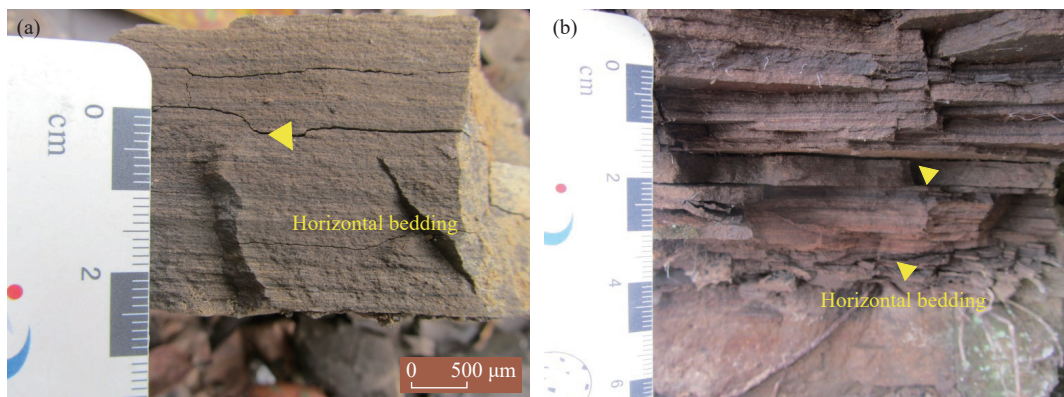


Fig. 8. Horizontal beddings developed in the carbonaceous silty mudstones of Wufeng formation in Xiadian section, Dejiang County, Guizhou Province.

silty mudstone, carbon-containing mudstone, argillaceous limestone and bioclastic-containing argillaceous limestone. Silt-containing mudstone and carbon-bearing mudstone were mostly distributed in the northern and central parts of the Sichuan Basin and developed *Hirnantia* brachiopods and a few trilobites. In the northern Guizhou area near the central Guizhou Uplift, the lithology was dominated by limestones and bioclastic-containing limestones, and developed brachiopods (Fig. 9), trilobites, crinoids, gastropods, and hornstones.

The shallow-water shelf facies of Longmaxi Formation is widely distributed in the restricted basin bounded by central Guizhou Uplift, Central Sichuan Uplift and Hannan Oldland, and composed of siltstone, silty mudstone and silt-containing shale (Fig. 10). Since affected by storms, tides and ocean currents intermittently, the sediments in the shallow water are easy to be transformed. The shallow water shelf generally consisted of dark gray and gray silty mudstone and silt-containing mudstone with horizontal bedding, small ripple lamination and cross-bedding. The types of biological fossils are mainly graptolites, a few brachiopods and corals.

4.4.2. Deep water shelf facies

In terms of depth, it is deeper than the shallow water shelf, mainly located in the shallow marine area below the storm wave base, and mainly composed of still water deposits. The Wufeng Formation and the lower part of the Longmaxi Formation all developed deep water shelf facies. The

lithology consisted of gray-black and black carbonaceous mudstone, carbonaceous silty mudstone and siliceous mudstone (Figs. 11, 12) with horizontal bedding. In addition, the organic carbon content is generally greater than 1.0%. This facies is a very important hydrocarbon generating zone in the process of shale gas exploration.

The deep water shelf of Wufeng Formation and Longmaxi Formation mainly deposited carbonaceous silty mudstone, silt-containing calcareous carbonaceous mudstone, carbonaceous mudstone and siliceous mudstone and developed horizontal bedding. The abundance and differentiation of graptolites are relatively high, with scattered occurrences of corals and brachiopods.

Pyrite typically exhibits a banded or lenticular morphology in the carbonaceous mudstone, and radiolaria fossils can be seen in the siliceous mudstone under the microscope with the content of 10% to 20%. The shape of the radiolaria is mostly spherical or elliptic, with a diameter between 0.05 mm and 0.3 mm. Besides, most of the siliceous radiolarian shells have been dissolved and destroyed, and then filled with opals or quartz. Despite this intense alteration, it is still possible to identify the circular and elliptical shape of these fossils in siliceous rocks. In summary, it is concluded that the deep-water shelf environment is quiet and less biodisturbed by benthic animals which is beneficial to the burial and preservation of organic matter, and is a very important shale gas exploration facies area in the whole Sichuan Basin.

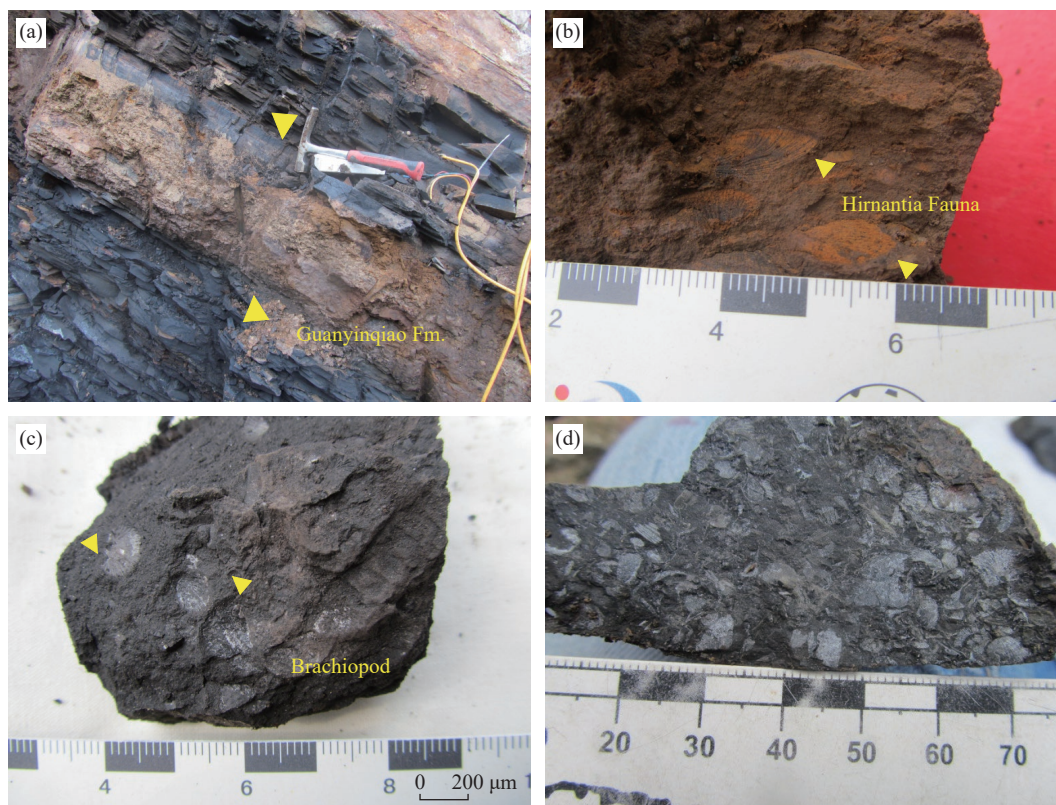


Fig. 9. Characteristic features of shallow water shelf facies in Guanyinqiao Formation. a–bioclastic-containing mudstone of Guanyinqiao Formation in Huangcao section, Wulong County; b–*hirnantia* brachiopods of bioclastic-containing mudstone in Huangcao section, Wulong County; c–*hirnantia* brachiopods of bioclastic-containing argillaceous limestone in Liangcun section, Xishui County; d–*hirnantia* brachiopods of bioclastic-containing argillaceous limestone in Dalianghui section, Wangcang County.

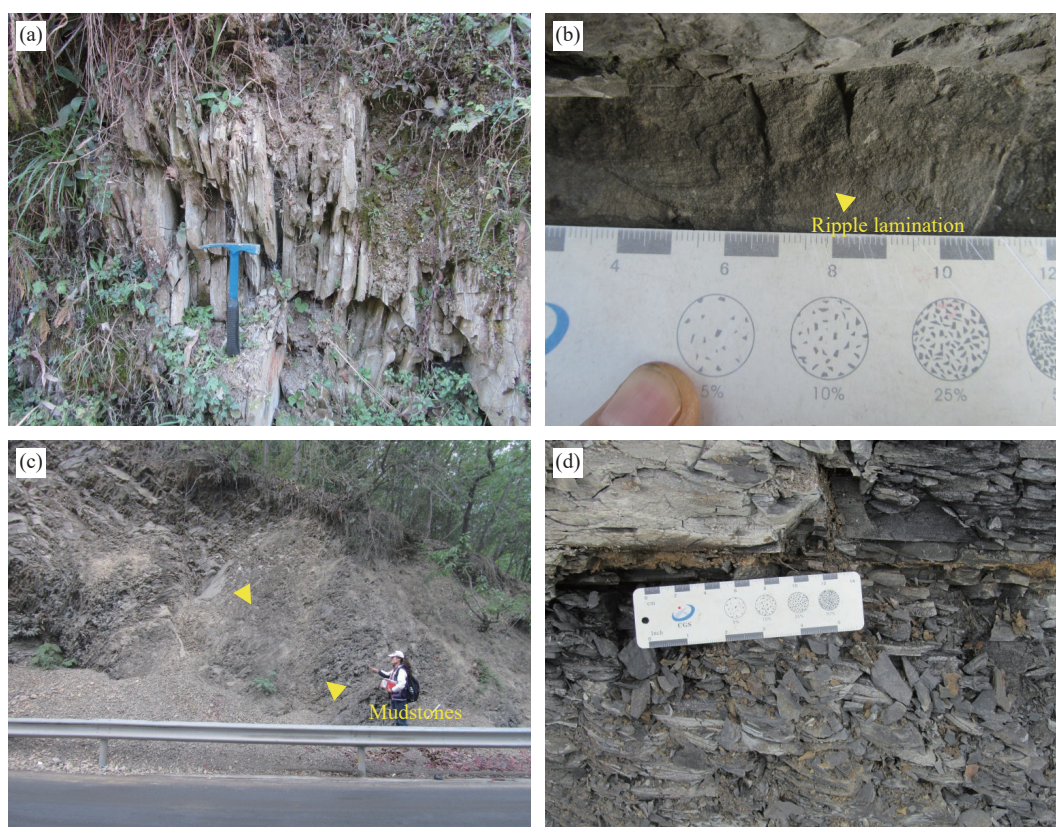


Fig. 10. Characteristic features of shallow water shelf facies in Longmaxi Formation. a–gray-green silty mudstone of Longmaxi Formation in Tuping section, Zhengan County; b–small ripple lamination developed in the silty mudstones of Longmaxi Formation in Tuping section, Zhengan County; c–gray-green shales of the upper part of Longmaxi Formation in Huangcao section, Wulong County; d–graygreen silt-containing mudstone of Longmaxi Formation in Hanjiadian section, Tongzi County.

Two east-west profile lines of Wufeng-Longmaxi Formation in Sichuan Basin are selected for comparison: One line is Shizhu Qialiao-Jiaoye 1 well - Xindi 1 well - Yongdi 1 well - Yongshan Yunqiao - Jinyang Xinzhaizi - Butuo Pobowu, the other is Pengye 1 well - Wulong Huangcao - Dingshan 1 well - Lin1 well - Xuyong Macheng - Junlian Luomurou - Leibo Bajiaotan (Figs. 13, 14). The distribution of sedimentary facies of the two east-west Wufeng-Longmaxi Formations are basically the same. Taking Shizhu Qialiao-Jiaoye 1 well-Xindi 1 well- Yongdi 1 Well-Yongshan Yunqiao - Jinyang Xinzhaizi -Butuo Pobowu as an example.

There are deep-water shelf of carbonaceous and siliceous shales with a thickness of 6 m in Wufeng Formation of Qialiao section, Shizhu County. The Guanyinqiao Formation is a set of biological argillaceous limestones with 1 m thick, the black shales of the lower part of the Longmaxi Formation is 56 m thick, and the upper part of Longmaxi Formation are dark gray, light gray muddy siltstone and siltstone. The lithology of Wufeng, Guanyinqiao and Longmaxi Formations in the vicinity of Jiaoye 1 well, Fuling is basically the same as that of Qialiao section, Shizhu county, but the thickness of the black shale of Longmaxi Formation is about 60 m larger than that of Qialiao. It is dominated by calcareous carbonaceous mudstone with marl lens, which is obviously shallower than the eastern side and mainly dark gray in sedimentary lithology color. The lithology of Xindi 1, Yongdi 1, Yongshan Yunqiao, Xinzhaizi, Pobowu of Wufeng and Longmaxi

Formations has the tendency of increase in terms of carbonate content, and consists of calcium-containing carbonaceous mudstone with limestone lens.

In contrast to the eastern part of the Sichuan Basin, the water depth decreases and the rock color is darker gray in the southwestern region. From the perspective of the overall sedimentary pattern of Sichuan Basin, the eastern area is concave-shaped pattern confined by the Central Sichuan Uplift and the central Guizhou Uplift. From the southeast direction of the Central Sichuan Uplift to the Qialiao section, Shizhu County and Jiaoye 1 well, Fulong County, the thickness of the black carbonaceous shale is the highest. Continue to the southwest to Xindi 1 well, Yongdi 1 well, Yongshan Yunqiao, Xinzhazi and Pobowu, the thickness of the black shale gradually thinned and the carbonate rocks such as argillaceous limestone gradually increased. The lower part of Longmaxi Formation is also dominated by carbonaceous calcareous mudstone. On the whole, the sedimentary water body in the Sichuan Basin from northwest to southeast became shallower, showing the characteristics of deep in the northeast and shallow in the southwest.

5. Lithofacies paleogeography

5.1. Lithofacies paleogeography of the organic rich shales in Wufeng Formation

At the end of the Middle Ordovician, the tectonic

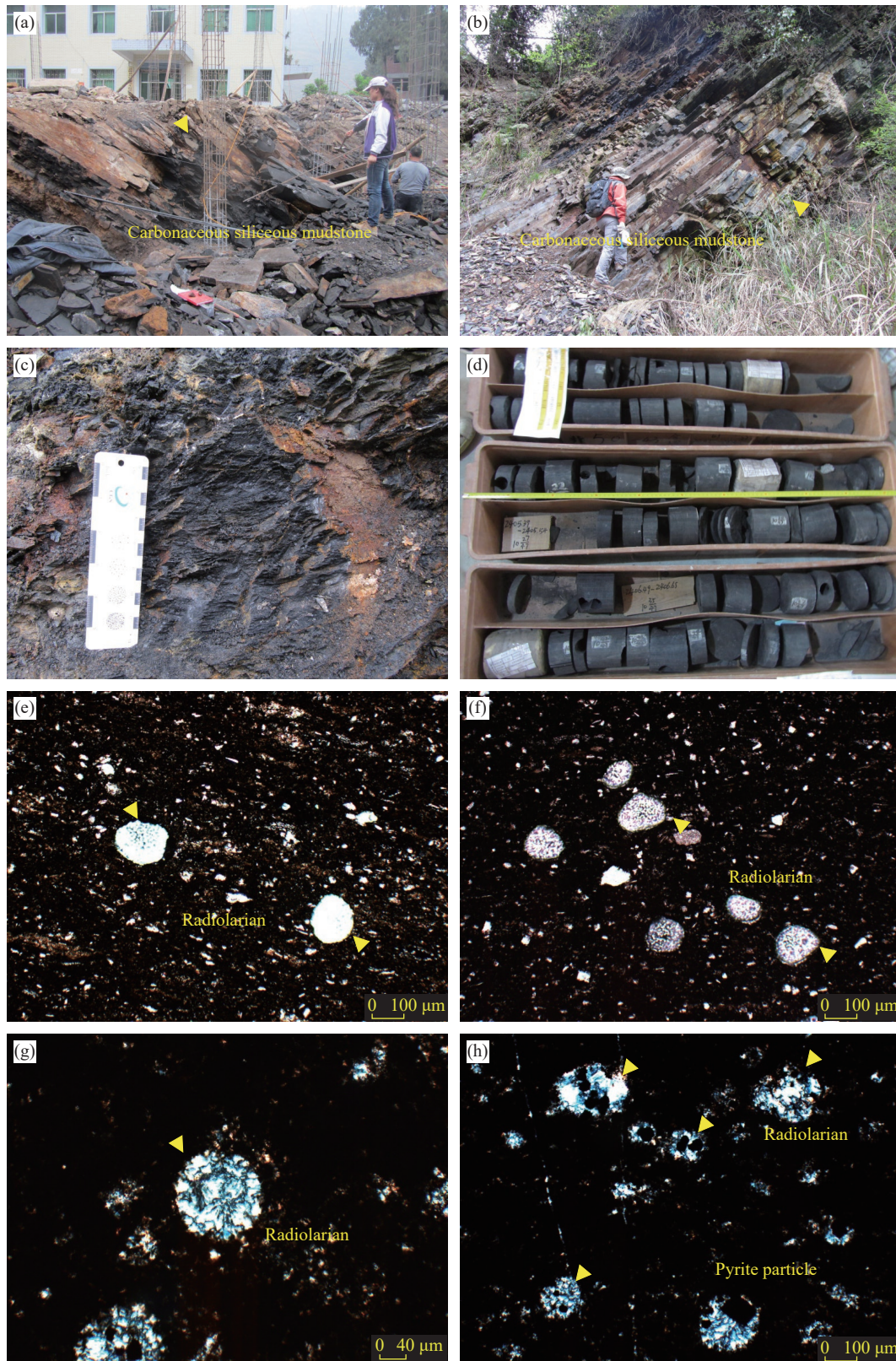


Fig. 11. Characteristic features of deep water shelf facies in Wufeng and Longmaxi Formations. a–d—macro characteristics of the black carbonaceous and siliceous mudstones; Longmaxi Formation, a—Huangcao section, Wulong County; b—Qiliao section, Shizhu County; c—Guanyinqiao section, Qijiang County; d—Jiaoye 1 well; e–h—radiolaria developed in carbonaceous and siliceous mudstones; Wufeng Formation, e—Huangcao section, Wulong County; f—Huangyingxiang section, Wulong County; g—Fucheng section, Nanzheng County; h—Shuanghui section, Wangcang County.

compression intensified continuously in South China plate affected by the Caledonian Movement (Zhou MK et al., 1993;

Liu BJ et al., 1993, 1994; Xu XS et al., 1996, 2004; Shu LS et al., 2008, 2012; Yan DT et al., 2010; Charvet J et al., 2010;

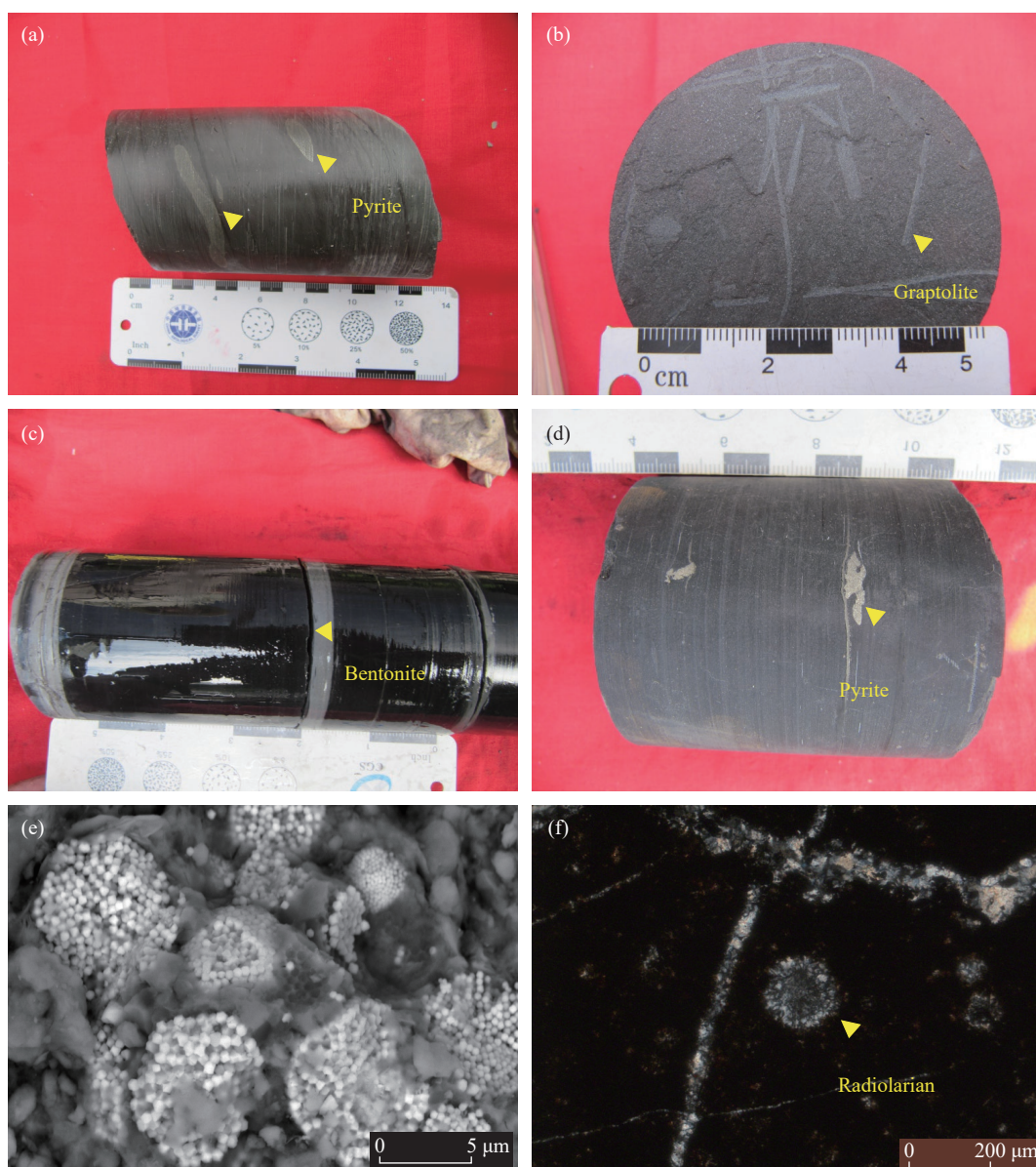


Fig. 12. Characteristic features of deep water shelf facies in Wufeng and Longmaxi Formations of Huadi 1well and Xindi 2well. a–pyrite nodules developed in the black shales (Huadi 1well, Wufeng Formation); b–graptolite developed in the black carbonaceous and siliceous mudstones (Huadi 1 well, Longmaxi Formation); c– bentonites developed in the black shales(Xindi 2well, Wufeng Formation); d–pyrites developed in the black shales (Xindi 2well, Longmaxi Formation); e–pyrite framboids developed in the black shales (Huadi 1well, Longmaxi Formation); f–radiolaria developed in the black shales (Huadi 1well, Wufeng Formation).

Faure M et al., 2009). Central Guizhou uplift, Xuefeng uplift and Central Sichuan Uplift increased continuously, and the Yangtze block changed from the craton basin to the back-bulge basin confined by the marginal uplifts and the lithology changed from pure carbonate rocks to the black shales. During this period, uplift, tidal flat, shallow water shelf and deep water shelf developed successively in Sichuan Basin and adjacent areas (Fig. 15).

The periphery of each uplift is tidal flat facies, dolomitic shales and argillaceous limestones are deposited in the periphery of Hannan Oldland, Central Sichuan Uplift. The shallow shelf facies roughly follows Hannan Oldland to the south of the Ningqiang-Nanjiang-Zhenba area and is composed of dolomitic mudstone and silty mudstone. The

facies follows Central Sichuan Uplift to the east to Jiange-Langzhong-Yingshan-Weiyuan-Leibo line, the Western Sichuan-Central Yunnan-Central Guizhou-Xuefeng Uplift to the north to Weixin-Renhuai-Wuchuan-Youyang-Longshan line, and the lithology is mainly carbon-containing siltstone, carbon-containing shale, dolomitic mudstone and silty mudstone. Deep water shelf facies mainly develops on the outside of shallow shelf facies and is bounded by the Junlian-Chishui-Qijiang-Nanchuan-Wulong-Qianjiang line. To the north, the rocks are carbonaceous and siliceous mudstone, while to the south, due to its proximity to the Central Guizhou Uplift, the carbonate rock composition increases and the carbonaceous mudstone and calcareous mudstone are dominated.

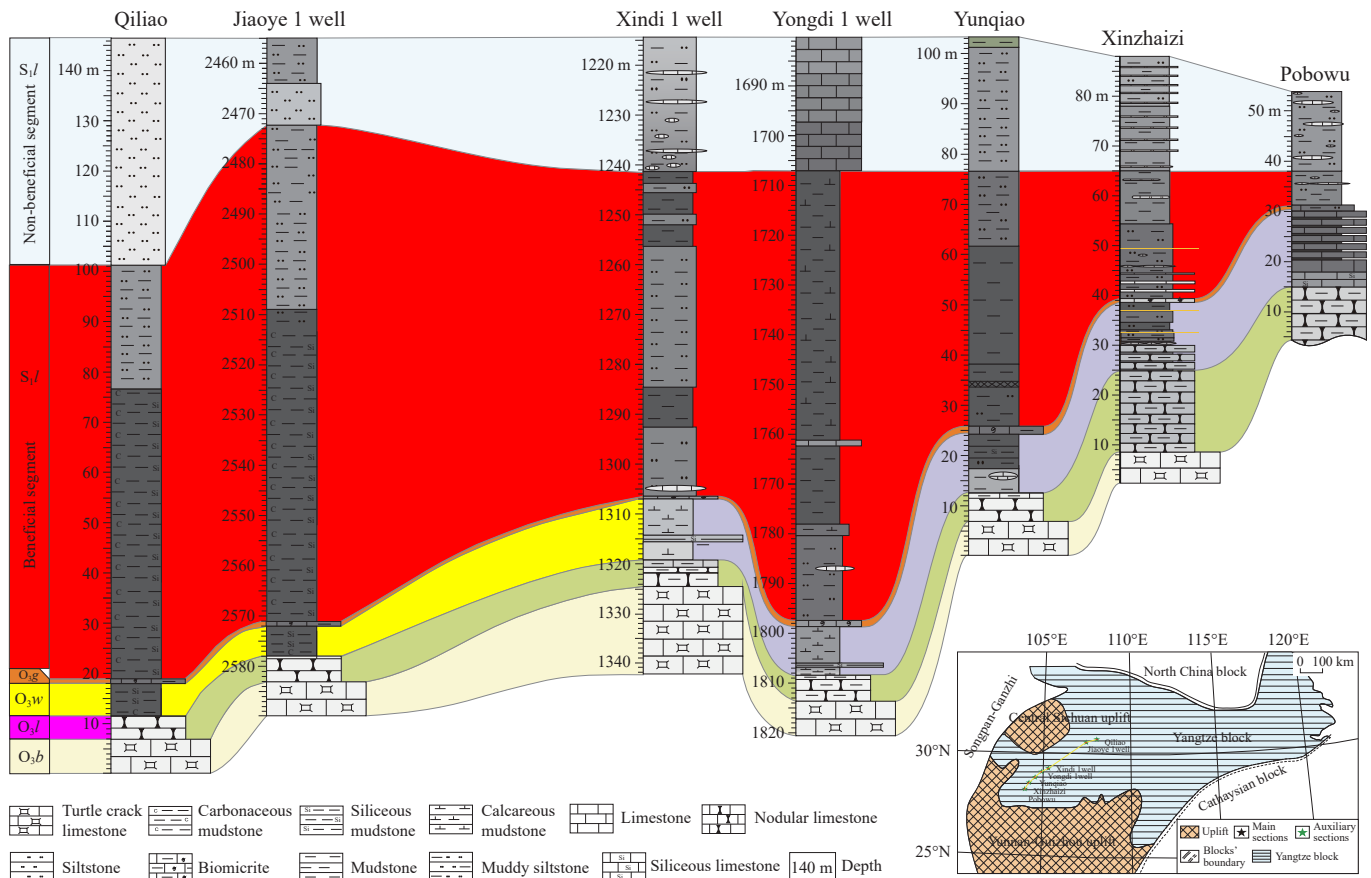


Fig. 13. Sedimentary correlation diagram of the north east-south west direction in Sichuan Basin and its adjacent areas (the palaeogeography map were modified from Ge XY, 2020).

5.2. Lithofacies paleogeography of the Guanyinqiao Formation

In the middle Hirnantian, the global eruption of Gondwana glaciation caused a significant drop in sea level, and the graptolite shale facies of Wufeng Formation was replaced by the shallow-water shell limestone facies of Guanyinqiao Formation. The Guanyinqiao Formation, with a thickness of only ten centimeters to several meters and a maximum of only ten meters, began to be deposited above on the black shale. During this period, the area of the Western Sichuan-Central Yunnan-Guizhou Uplift also increased, and the edges of the uplifts are still tide-flat facies (Fig. 16). The periphery of the Central Sichuan Uplift is mainly developed biological limestone, which is roughly located between the Baoxing - Ya'an - Laolong 1 well - Anyue - Nanchong - Yanting - Mianyang and Yingjing - Woshen 1 well - Qianwei - Zizhong - Huaying lines. The periphery of the Central Yunnan-Central Guizhou Uplift deposited dolomitic shale and argillaceous limestone. In the east tidal flat, such as Fenggang Dongkarla, Renhuai Zhongshu sections are high energy shoal facies deposits. The Dongkala area develops sparry oolitic limestone, sand-clastic limestone, and the Renhuai Zhongshu section is dominated by coral reef limestone.

The shore facies is located outside of Hannan Oldland and composed of quartz coarse sandstone, calcareous coarse sandstone, mud-containing coarse quartz sandstone and

pebbly coarse sandstone. There are fine gravels in Nanzheng Fucheng, and Zhenba Liangbai sections. Hirnantia brachiopods are found in Wuxing section, and a set of biogenic mudstone developed above the mud-containing coarse-grained quartz sandstone of Liangbai section, containing trilobites, brachiopods and other organisms. Clastic shallow-water shelf facies is situated between Zhenba-Fucheng-Ningqiang and Nanjiang-Wanyuan lines and made up of argillaceous siltstone and mudstone. A wide range of shallow water shelf facies were deposited outside the tidal flat facies of the Central Sichuan Uplift and the Central Yunnan-Central Guizhou Uplift. The rock associations of shallow water shelf facies are diverse. The Xingjing - Woshen 1 well - Qianwei - Zizhong - Huaying and Hanyuan - Leibo - Changning - Luzhou - Yongchuan - Linshui - Yingshan - Jiange lines are still dominated by carbonate deposits, which are mainly bioclastic-containing argillaceous limestone and argillaceous limestone. On the south side, the shallow-water shelf facies around the Western Sichuan-Central Yunnan-Central Guizhou Uplift is bounded by the Ganluo - Butuo - Jinyang - Dagan - Weixin - Tongzen - Daozhen - Wulong - Shizhu - Enshi line, which is dominated by sedimentary clastic rocks, which are argillaceous siltstone and silty mudstone. The facies between Ganluo - Butuo - Jinyang - Dagan - Weixin - Tongzi - Daozhen - Wulong - Shizhu - Enshi and Hanyuan - Leibo - Changning - Luzhou - Yongchuan - Linshui - Yingshan - Jiange lines are dominated

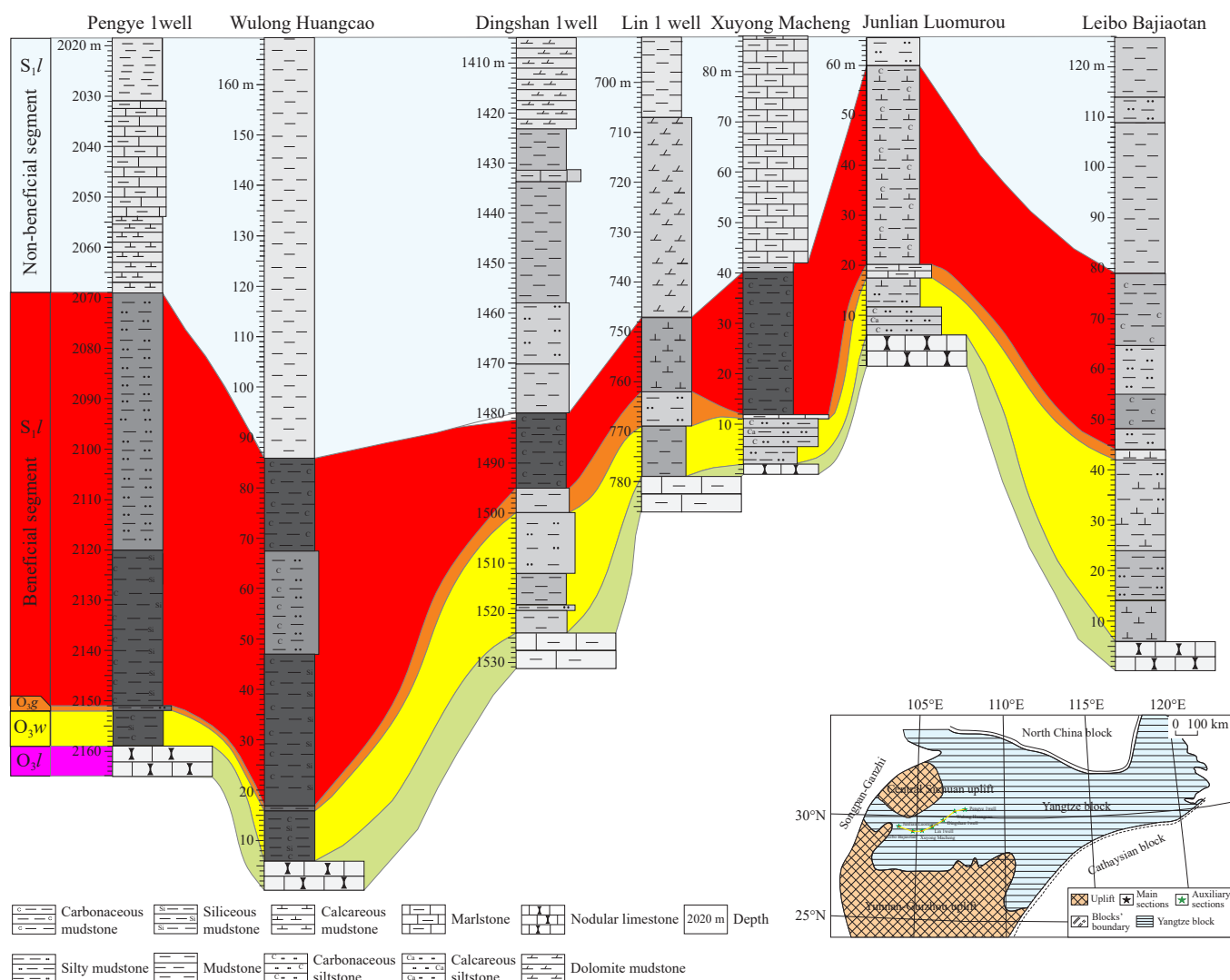


Fig. 14. Sedimentary correlation diagram of the nearly east-west direction in Sichuan basin and its adjacent areas (the palaeogeography map were modified from Ge XY, 2020).

by mixed shelf deposits, which are biological argillaceous limestone, calcareous shale and mudstone.

5.3. Lithofacies paleogeography of the organic rich shales in the lower part of Longmaxi Formation

At the end of the Hirnantian, the glaciers began to melt, the temperature gradually warmed, and the relative sea level rose significantly. In the early Rhuddanian of the Early Silurian, large-scale transgressions occurred worldwide, black carbonaceous shale with stable thickness widely distributed at the bottom of the Longmaxi Formation. The paleogeography distribution of this period, as illustrated in Fig. 17.

Since the late Late Ordovician, with the intensification of collision in South China, the areas of Central Guizhou Uplift, Xuefeng Uplift and Central Sichuan Uplift Hannan Oldland and Kangdian Oldland have been enlarged. The periphery of the uplifts were narrow tidal flat zones of clastic and carbonate rocks. In the north distributed in circularity in the periphery of Hannan Oldland. The lithology is dominated by carbon-containing silty mudstone and siltstone with horizontal

bedding and lenticular bedding. The shallow-water shelf facies is deposited outside tidal flat and composed of carbonaceous mudstone and silty mudstone. According to the old well data of the periphery of Central Sichuan Uplift, the uplift area extends to the Baoxing - Leshan - Jingyan - Ziyang - Nanchong - Mianyang line. Perhaps affected by late weathering and denudation, no tidal flat deposits have been found around the Central Sichuan Uplift. The lower part of the Longmaxi Formation in the Hanyuan - Yingjing area is mainly a set of gray-black mudstone, silty mudstone and siltstone with low organic carbon content, which has the characteristic of shallow water shelf facies. However, the boundary between the shallow water shelf and uplift can not be accurately determined, so the Central Sichuan Uplift is still called the denudation area. A small range of shallow water shelf deposits outside the uplift. According to the surface profile data of the Luding-Hanyuan area, three small uplifts are developed near Luding and Hanyuan, and shallow water shelf deposits dominated by carbon-containing silty mudstone and silty mudstone is deposited on the periphery of the uplifts. The southernmost Kangdian Oldland, Central Guizhou Uplift

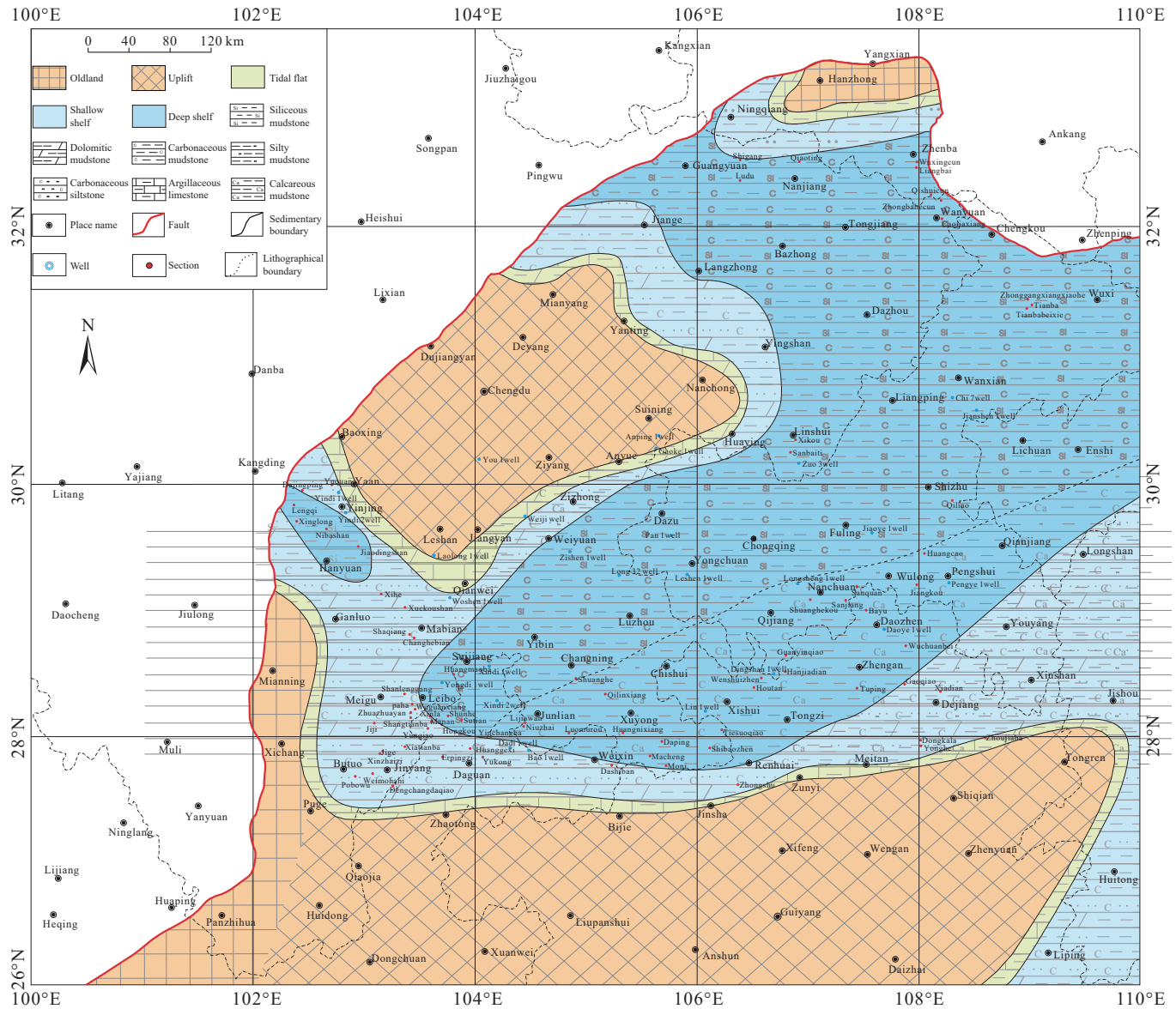


Fig. 15. Lithofacies paleogeography map of Wufeng formation in Sichuan Basin and its surrounding areas.

and Xuefeng Uplift are connected to form a large uplift. The northern uplift is roughly bounded by the Xichang - Puge - Zhaotong - Bijie - Jinsha - Zunyi - Tongren line, and the periphery of the uplift area is tidal flat facies which is composed of mainly mud-containing silty and sand clastic limestone and carbon-containing silty limestone. The shallow shelf facies is deposited on the outer edge of the tidal flat facies. The shallow shelf facies is bounded by the Hanyuan - Ganluo - Butuo - Jinyang - Junlian - Xuyong - Xishui - Zheng'an - Xiushan line and composed of carbon-containing argillaceous limestone and calcareous mudstone with horizontal bedding.

The deep water shelf facies occupies a large part of the east and south Sichuan Basin. The sedimentary facies roughly follows the Yingjing - Jingyan - Anyue - Nanchong - Yanting - Mianyang line to the southeast, Hanyuan - Ganluo - Butuo - Jinyang - Junlian - Xuyong - Xishui - Zheng'an - Xiushan line to the north to Zhenba - Wanyuan - Chengkou - Wuxi area. The area is divided into two lithologic associations roughly

bounded by the Wei yuan - Yongchuan - Chongqing - Wulong - Pengshui line: In the south of this line, due to its proximity to Central Guizhou and Xuefeng Uplifts, the calcareous composition is obviously higher, and the lithofacies association is dominated by carbonaceous calcareous mudstone, silicon-containing carbonaceous silty mudstone and calcium-containing carbonaceous silty mudstone. In the north of this line, the lithologic association is dominated by carbonaceous mudstone and siliceous mudstone with small amount of carbonate composition.

5.4. Lithofacies paleogeography of the upper part of Longmaxi Formation

In the late sedimentary period of Longmaxi Formation, the tectonic compressions from the southeast were intensified, the uplifts moved to the northwest continuously, and the sea level decreased. Central Guizhou, Xuefeng and Central Sichuan Uplifts expanded, the upper part of Longmaxi Formation

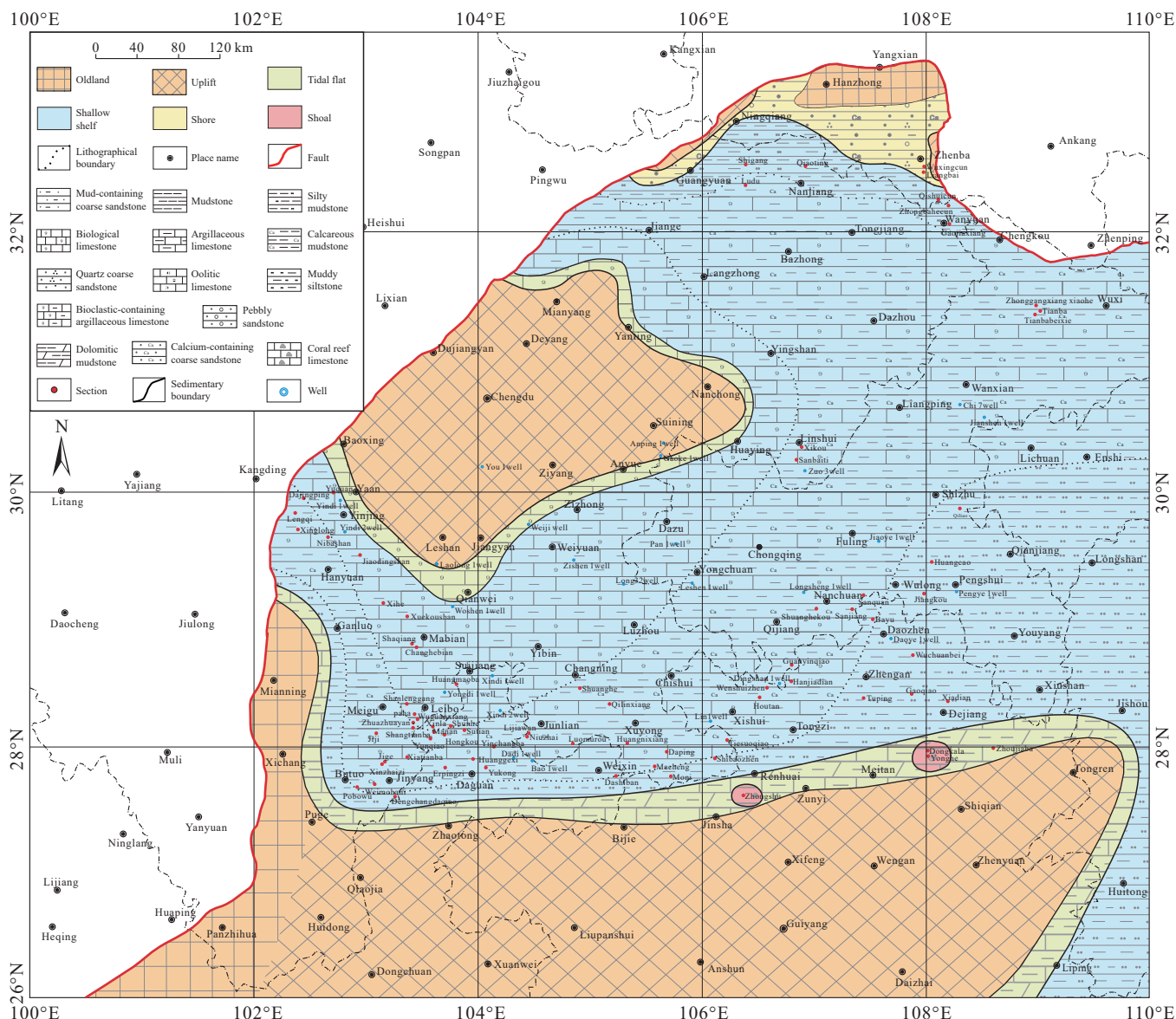


Fig. 16. Lithofacies paleogeography map of Guanyinqiao Formation in Sichuan Basin and its surrounding areas.

deposited gray-green, gray-yellow sandy shale and siltstones instead of black shales. Apart from the tidal flat facies developed in the periphery of these oldlands and uplift, the middle and upper part of Longmaxi Formation was basically in a shallow water shelf environment which occupied the majority of the study area (Fig. 18).

Compared with the early Longmaxi stage, the tidal flat facies near Kangdian Oldland, Central Guizhou and Xuefeng Uplifts extends to the Ganluo - Butuo - Danguan - Weixin - Tongzi - Dejiang - Xiushan area. This facies mainly deposits interbeds of gray, gray-green calcareous siltstone and argillaceous limestone in different thickness. The lithology color was shallower than that of the lower part, and the calcium composition increased, the terrigenous clastic grain size became coarse-grained, and the sedimentary sequence of Longmaxi Formation is shallower from bottom to top. shallow water shelf located in the periphery of tidal flat facies and occupied most areas of southeast Sichuan and Chongqing and western Hubei. The Weiyuan - Yongchuan - Chongqing -

Wulong - Longshan line was divided into two lithofacies assemblages. In the south of the line, gray and dark gray carbon-containing calcareous mudstone and argillaceous limestone were mainly deposited, and the carbonate composition is significantly increased compared with the lower part of Longmaxi Formation, while the north of the line is still dominated by terrigenous fine clastic rocks with little carbonate composition, and composed of gray thin-medium carbon-containing silty mudstone and siltstone.

6. Sedimentary model of the black shales in Wufeng and Longmaxi Formations

Although Wufeng and Longmaxi Formations developed the same black shales, the formation mechanisms were different. There was a very short glacial event between the two sets of black shales, and the changes in sea level in the Ordovician-Silurian transitions were also quite frequent and influenced by multiple factors such as tectonic activity,

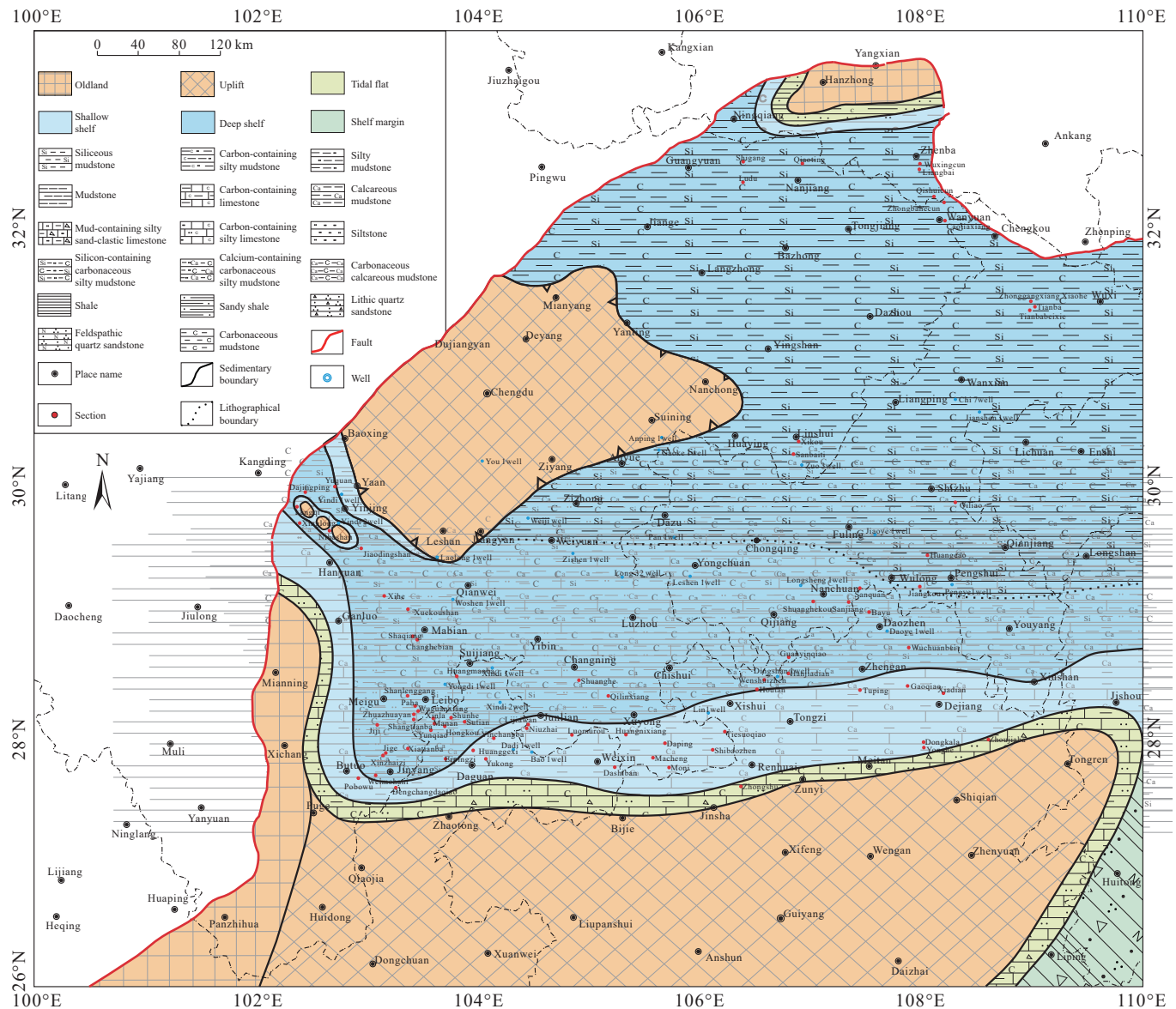


Fig. 17. Lithofacies paleogeography map of the organic rich shales from Longmaxi Formation in Sichuan Basin and its surrounding areas.

paleoclimate, global sea level change and terrigenous supply. In the Late Ordovician-Early Silurian, the Cathaysia and Yangtze Blocks collided due to Caledonian movement, uplifts (e.g., Central Guizhou, Central Sichuan, Western Sichuan and Central Yunan uplifts) constantly expanded and rose, the Yangtze area evolved into a semiclosed basin. As the marginal uplifts expanded, the basin base descended, and sea level rose relatively, coupled with frequent volcanic eruption events caused volcanic ash to fall to the surface of the sea and provide a lot of nutrients for the flourishing of organisms. Under these multiple factors, the lower part black shales of Wufeng formation were deposited in the Yangtze area instead of carbonate rocks. In the early Hirnantian, because of the sustained collision, the basin base continued to decline. However, the Gondwana glaciation started and the global sea level dropped. Since the falling rate of the basin base is \geq the descent of the sea level caused by the glaciation, black shales were still deposited in the Yangtze area in the upper part of the Wufeng formation with comparatively low TOC. In the

middle Hirnantian, because of the sustained collision, the basin base continued to decline. The falling rate of the basin base was \leq the descent of the sea level caused by the glaciation, and the relative sea level went down, depositing the siltstones of the Guanyinqiao Formation. In the late Hirnantian, the change trend of the sea level corresponded with that of the early Hirnantian, and the sea level increased, the bottom black shale of Longmaxi Formation were deposited. In the Rhuddanian (Early Silurian), the ice melted, global sea level went up, and a new round of frequent volcanic eruption events restarted, which provided more food supplies for marine surface organisms and algae, resulting in the continuous deposition of black shale in the lower part of Longmaxi Formation (Fig. 19). To sum up, although there is no difference between the two sets of black shales in appearance and morphology, the genetic mechanism of their formation is not the same. When studying the main controlling factors of their organic matter enrichment and preservation, in addition to the factors of black shales and

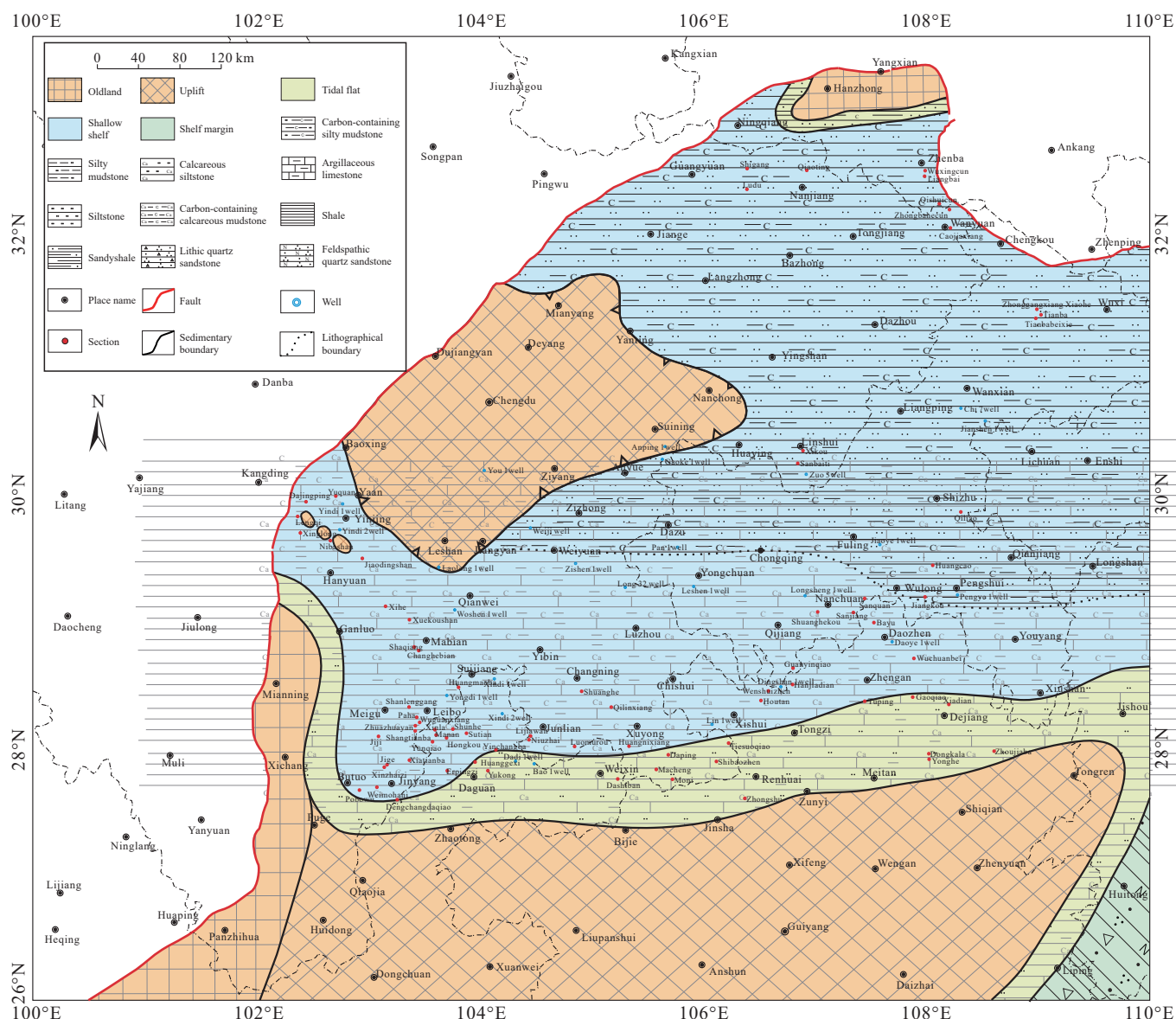


Fig. 18. Lithofacies paleogeography map of the upper part of Longmaxi Formation in Sichuan Basin and its surrounding areas.

ancient seawater environment, the influence of volcanic activity and glaciation should not be ignored. During the sedimentary period of the Wufeng Formation, only tectonic compression caused the depositional basement to decline, and the anoxic environment resulted in the deposition of the black shales. However, the black shales of Longmaxi Formation were deposited after the melting of glaciers. The melting and tectonic compression both led to the rise of sea level and intensified the anoxic environment, thus promoting the burial and preservation of black organic matter.

7. Shale gas potential evaluation

At present, the recoverable geological resources of the shale gas in China are $2.508 \times 10^{12} \text{ m}^3$, of which $1.45 \times 10^{12} \text{ m}^3$ is recoverable in South China, accounting for 58%, mainly distributed in the Sichuan Basin and its surrounding areas (Nie HK et al., 2019). The yearly shale gas production in China exceeded $220 \times 10^8 \text{ m}^3$ in 2021, and shale gas has

become an important part of the exploration of unconventional oil in China (Zhang JC et al., 2021, 2022).

At present, for the Wufeng-Longmaxi Formations black shale, a key formation for marine shale gas exploration in South China, the authors have established a series of shallow national shale gas exploration demonstration zones with a buried depth of less than 3500 m in Fuling, Changning-Weiyuan and Zhaotong, and are about to break through the deep shale gas zone of 3500–4500 m in Luzhou. By the end of 2020, the shale gas geological reserves of Wufeng-Longmaxi Formations in Sichuan Basin are $2.0 \times 10^{12} \text{ m}^3$, and the recoverable reserves are about $4700 \times 10^8 \text{ m}^3$. With the enhancement of shale gas exploration degree and technology in middle-shallow and complex structural areas in South China, the exploration in deep and ultra-deep shale gas fields has been promoted. Deep shale gas (buried more than 3500 m) has become an important strategic replacement area for subsequent shale gas exploration and development. At present, a number of wells in the Wufeng Longmaxi

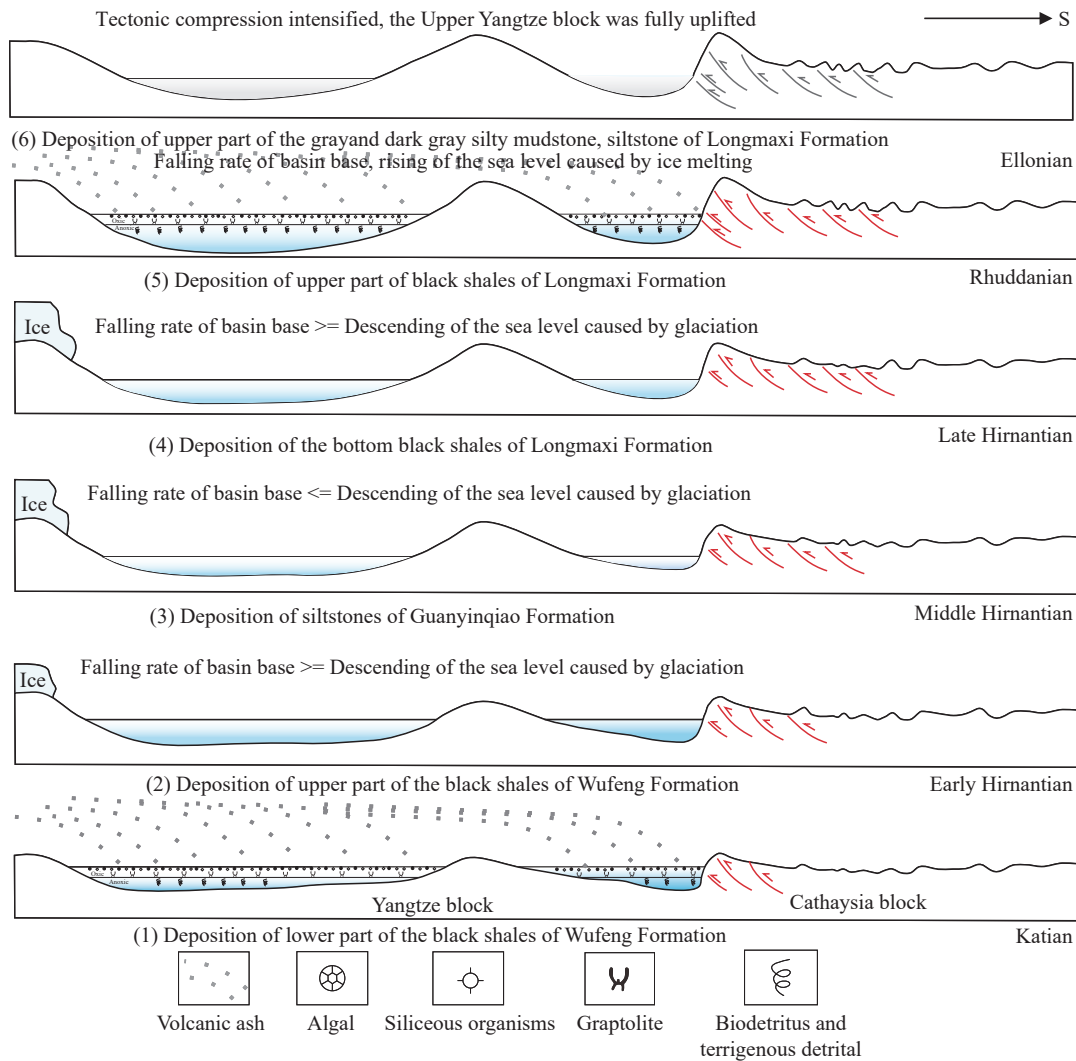


Fig. 19. Depositional model of black shales of Wufeng and Longmaxi Formations in Sichuan Basin.

Formation in Dingshan-Dongxi, Weiyuan-Yongchuan, Changning-Luzhou and other areas in the Sichuan Basin have obtained high-production shale gas, which further confirms the huge resource potential of the deep-ultra deep shale gas field in the Sichuan Basin and its surrounding areas, and is a strategic replacement field for increasing shale gas storage and production in China in the future (Guo XS et al., 2022).

For the complicated structural belts in South-west edge of Yangtze, the influences of the complex faults, frequent tectonics and magmatic activities on the preservation of the shale gas is a key factor for shale gas accumulation and high production. In the previous work of public welfare shale gas basic survey conducted by China Geological Survey, Chengdu Center of China Geological Survey has successively deployed several shale gas survey wells in southwestern Sichuan and northeastern Yunnan. The thickness of the organic-rich shales in Xindi 2 well is 32 m, and the average field analytical gas volume is 2.01 m³/t; the thickness of organic-rich shale in Yundadi 3 well is 40 m, and the average field analytical gas volume is 0.80–2.23 m³/t. The thickness of organic-rich shale in well Yundaye 1 well is 38 m, and the field analytical gas volume is 2.90–9.68 m³/t (Yang YM et al., 2021). All the three wells with favorable gas logging

shows are all in deep water shelf environment. The geological characteristics of the shale gas show that the shale gas resources of the Suijiang-Leibo-Daguan complicated structural area in southwestern Sichuan Basin have a bright prospect, and if the tectonics, magmatic activities or fault system do not damage the shale gas preservation in this area, the shale gas resource potential can be further enhanced.

The Luzhou-Zigong area, Weirong-Yongchuan area and Nanchuan-Dingshan area are geographically close to Changning-Weiyuan and Fuling shale gas fields. The sedimentary facies is deep water shelf facies which is consistent with that of the two gas exploration demonstration areas. The thickness, mineral composition and pore characteristics of the black shale of Wufeng-Longmaxi Formation are similar to those of Changning-Weiyuan and Fuling blocks. In addition, during the exploration of deep shale gas by CNPC (China National Petroleum Corporation) and Sinopec, multiple wells (WY1, YY1, DY2, DY4, DYS1, L203, Z201-H1) all showed industrial gas flow. In YY1 well region of Yongchuan area, 6 wells were tested with a daily gas rate of (8–14) × 10⁴ m³ with 234 × 10⁸ m³ proven reserves; 3 deep Wells in Dingshan area were tested with a daily gas rate of (5–15) × 10⁴ m³, DYS1 well in Dongxi area

was $31.18 \times 10^4 \text{ m}^3$, L203 well in Luzhou area was $138 \times 10^4 \text{ m}^3$, and Z201-H1 well in Dazhu area was $46 \times 10^4 \text{ m}^3$ (He ZL et al., 2021). With further understanding of enrichment regularity of the deep shale gas resources, the continuous improvement of geological selection and sweet spot prediction methods and technologies, and the continuous improvement of drilling and fracturing technology and equipment system, Luzhou-Zigong area, Weirong-Yongchuan area, and Nanchuan-Dingshan area will become the key blocks of shale gas exploration in the next stage.

8. Conclusions

(i) Based on petrological characteristics, fossils, sedimentary sequences and structures, and laboratory analyses, the Wufeng, Guanyinqiao, and Longmaxi Formations can be classified into shore facies, tidal flat, shoal, shallow water shelf, and deep water shelf facies. This classification confirms the presence of shallow water deposition between the two sets of black shales in the Wufeng and Longmaxi Formations.

(ii) Although Wufeng and Longmaxi Formations developed the same black shales, their formation mechanisms were different. The Upper Yangtze area transitioned from a cratonic marine basin to a basin enclosed by uplifts. Frequent volcanic eruptions deposited volcanic ash on the sea surface, providing abundant nutrients that supported the flourishing of marine organisms. Under these combined influences, the black shales of the Wufeng Formation were deposited. Subsequently, tectonic compression between the Yangtze and Cathaysia landmasses intensified, causing the basin's basement to subside further. Melting glaciers led to rising sea levels, and a new phase of frequent volcanic eruptions began, supplying additional nutrients to marine organisms and algae. This resulted in the continuous deposition of black shale in the lower part of the Longmaxi Formation.

(iii) From the perspective of basic sedimentary geology and shale gas geological characteristics, the Suijiang-Leibodaguan area, Luzhou-Zigong area, Weirong-Yongchuan area, and Nanchuan-Dingshan area, located on the southwest margin of the Sichuan Basin, may be key regions for shale gas exploration of the Wufeng-Longmaxi Formations in the next stage.

CRedit authorship contribution statement

Xiang-ying Ge, Chuan-long Mou and Xin Men conceived of the presented idea. Qian Hou, Bin-song Zheng and Wei Liang carried out the experiment. All authors discussed the results and contributed to the final manuscript.

Declaration of competing interest

The authors declare no conflicts of interest.

Acknowledgment

This study was supported by the project of the China

Geological Survey (DD20221661). The authors thank the reviewers for their very constructive and helpful comments, which helped to improve this manuscript.

References

- Bureau of Geology and Mineral Resources of Sichuan Province. 1991. The Strata of Sichuan. Beijing, Geological Publishing House, 93–113 (in Chinese).
- Charvet J, Shu LS, Faure M, Choulet F, Wang B, Lu HF, Breton NL. 2010. Structural development of the Lower Paleozoic belt of South China: Genesis of an intracontinental orogen. *Asian Earth Science*, 39(4), 309–330. doi: [10.1016/j.jseas.2010.03.006](https://doi.org/10.1016/j.jseas.2010.03.006).
- Chen C. 2018. Research on Paleogeography, Paleoclimate and Formation Mechanism of Source Rock during Geologic Transition Period from Late Ordovician to Early Silurian in Southern Sichuan Province - Northern Guizhou Province, South China. Wuhan, China University of Geosciences(Wuhan), Ph. D thesis, 1–146 (in Chinese with English abstract).
- Chen HD, Huang FX, Xu SL, Zhao LQ, Hua XS. 2009. Distribution rule and main controlling factors of the carbonate rock reservoirs in the Middle and Upper Yangtze Region. *Journal of Mineralogy and Petrology*, 29(4), 7–15 (in Chinese with English abstract). doi: [10.19719/j.cnki.1001-6872.2009.04.002](https://doi.org/10.19719/j.cnki.1001-6872.2009.04.002).
- Chen L, Tan XC, Zheng J, Chen X, Yang Y, Xiong M, Wang GX, Ji YB. 2023. Shallow water onlap sedimentary model of black organic rich shale in the Longmaxi Formation, Upper Yangtze Area. *Journal of Palaeogeography*, 25(3), 1–13 (in Chinese with English abstract). doi: [10/7605/gdxb.2023.03.039](https://doi.org/10/7605/gdxb.2023.03.039).
- Chen X, Fan JX, Wang WH, Wang HY, Nie HK, Shi XW, Wen ZD, Chen DY, Li WJ. 2017. Stage-progressive distribution pattern of the Lungmachi black graptolitic shales from Guizhou to Chongqing, Central China. *Science China Earth Sciences*, 60, 1133–1146. doi: [10.1007/s11430-016-9031-9](https://doi.org/10.1007/s11430-016-9031-9).
- Chen X, Fan JX, Zhang YD, Wang HY, Chen Q, Wang WH, Liang F, Guo W, Zhao Q, Nie HH, Wen ZD, Sun ZY. 2015. Subdivision and Delineation of the Wufeng and Lungmachi Black shales in the Subsurface areas of the Yangtze Platform. *Journal of Stratigraphy*, 39(4), 351–358 (in Chinese with English abstract). doi: [10.19839/j.cnki.dcxz.2015.04.001](https://doi.org/10.19839/j.cnki.dcxz.2015.04.001).
- Chen X, Rong JY, Fan JX, Zhan RB, Mitchell CE, Harper DAT, Melchin MJ, Peng PA, Finney S C, Wang XF. 2006. The Global boundary Stratotype Section and Point (GSSP) for the base of the Hirnantian Stage (the uppermost of the Ordovician System). *Episodes*, 29, 183–196. doi: [10.1007/s00254-006-0299-9](https://doi.org/10.1007/s00254-006-0299-9).
- Chen X, Chen Q, Zhen YY, Wang HY, Zhang LN, Zhang JP, Wang WH, Xiao ZH. 2018. Circumjacent distribution pattern of the Lungmachi black shale (early Silurian) on the Yichang Uplift and its peripheral region. *Science China Earth Sciences*, 61, 1195–1203. doi: [10.1007/s11430-017-9222-x](https://doi.org/10.1007/s11430-017-9222-x).
- Fan JX, Melchin MJ, Chen X, Wang Y, Zhang YD, Chen Q, Chi ZL, Chen F. 2011. Biostratigraphy and geography of the Ordovician-Silurian Lungmachi black shales in South China. *Science China Earth Science*, 54, 1854–1863. doi: [10.1007/s11430-011-4301-3](https://doi.org/10.1007/s11430-011-4301-3).
- Fang YT, Bian LC, Yu JH, Feng HZ. 1993. Sedimentary environment pattern of Yangtze Plate in Wufeng age of Late Ordovician. *Acta Sedimentologica Sinica*, 17(3), 179–185 (in Chinese with English abstract). doi: [10.14027/cnki.cjxb.1993.03.002](https://doi.org/10.14027/cnki.cjxb.1993.03.002).
- Faure M, Shu LS, Wang B, Charvet J, Monie P. 2009. Intracontinental subduction: A possible mechanism for the Early Palaeozoic Orogen of SE China. *Terra Nova*, 21(5), 360–368. doi: [10.1111/j.1365-3121.2009.00888.x](https://doi.org/10.1111/j.1365-3121.2009.00888.x).
- Ge XY, Mou CL, Yu Q, Liu W, Men X, He JL, Lu JZ, Liang W. 2021.

- Petrology and geochemistry of the K bentonites at the Ordovician-Silurian transition in XD2 well, Daguang, Yunnan Province. *Geology in China*, 48(3), 911–924 (in Chinese with English abstract). doi: [10.12029/gc20210318](https://doi.org/10.12029/gc20210318).
- Ge XY. 2020. The events across the Ordovician–Silurian transition and the organic enrichment of black shales in the east of Sichuan Basin. Beijing, China University of Geosciences (Beijing), Ph. D thesis, 1–142 (in Chinese with English abstract).
- Ge XY, Mou CL, Yu Q, Liu W, Men X, He JL. 2019. The geochemistry of the sedimentary rocks from the Huadi No. 1 well in the Wufeng-Longmaxi Formations (Upper Ordovician-Lower Silurian), South China, with implications for paleoweathering, provenance, tectonic setting and paleoclimate. *Marine and Petroleum Geology*, 103, 646–660. doi: [10.1016/j.marpetgeo.2018.12.040](https://doi.org/10.1016/j.marpetgeo.2018.12.040).
- Guo XS. 2019. Controlling factors on shale gas accumulations of Wufeng-Longmaxi Formations in Pingqiao shale gas field in Fuling area, Sichuan Basin. *Natural Gas Geoscience*, 30(1), 1–10 (in Chinese with English abstract). doi: [10.11764/j.issn.1672-1926.2018.12.007](https://doi.org/10.11764/j.issn.1672-1926.2018.12.007).
- Guo XS, Borjigin TE, Wei XF, Yu LJ, Lu XC, Sun L, Wei FB. 2022. Occurrence mechanism and exploration potential of deep marine shale gas in Sichuan Basin. *Acta Petrologica Sinica*, 43(4), 453–468 (in Chinese with English abstract). doi: [10.7623/syxb202204001](https://doi.org/10.7623/syxb202204001).
- Guo XS, Hu DF, Wei ZH, Li YP, Wei XF. 2016. Discovery and exploration of Fuling shale gas field. *China Petroleum Exploration*, 21(3), 24–37 (in Chinese with English abstract). doi: [10.3969/j.issn.1672-7703.2016.03.003](https://doi.org/10.3969/j.issn.1672-7703.2016.03.003).
- Guo XS, Li YP, Liu RB, Wang QB. 2014. Characteristics and controlling factors of micro-pore structures of Longmaxi Shale Play in the Jiaoshiba area, Sichuan Basin. *Natural Gas Industry B*, 34(6), 9–16 (in Chinese with English abstract). doi: [10.3787/j.issn.1000-0976.2014.06.002](https://doi.org/10.3787/j.issn.1000-0976.2014.06.002).
- Guo W, Li XZ, Zhang XW, Lan CL, Liang PP, Shen WJ, Zheng MJ. 2022. Sedimentary microfacies and microrelief of organic-rich shale in deep water shelf and control on reservoirs: A case study of shale from Wufeng-Longmaxi Formations in southern Sichuan Basin. *Acta Petrologica Sinica*, 43(8), 1089–1106 (in Chinese with English abstract). doi: [10.7623/syxb202208005](https://doi.org/10.7623/syxb202208005).
- He ZL, Nie HK, Jiang TX. 2021. Challenges and countermeasures of effective development with large scale of deep shale gas in Sichuan Basin. *Reservoir Evaluation and Development*, 11(2): 1–11 (in Chinese with English abstract). doi: [10.13809/j.cnki.cn32-1825/te.2021.02.001](https://doi.org/10.13809/j.cnki.cn32-1825/te.2021.02.001).
- Hu ZQ, Du W, Zhu T, Liu ZQ. 2022. Sequence stratigraphy and lithofacies characteristics of fine-grained deposits of Wufeng-Longmaxi Formations in the Sichuan Basin and on its periphery. *Oil & Gas Geology*, 43(5), 1024–1038 (in Chinese with English abstract). doi: [10.11743/ogg20220502](https://doi.org/10.11743/ogg20220502).
- Huang FX, Chen HD, Hou MC, Zhong YJ, Li J. 2011. Filling process and evolutionary model of sedimentary sequence of Middle-Upper Yangtze craton in Caledonian (Cambrian-Silurian). *Acta Petrologica Sinica*, 27(8), 2299–2317 (in Chinese with English abstract). doi: [CNKI:SUN:YSXB.0.2011-08-008](https://doi.org/CNKI:SUN:YSXB.0.2011-08-008).
- Li GP, Zhan RB, Wu RC. 2009. Response of hirmantia fauna to the environmental changes before the second phase of late Ordovician mass extinction: Example from the Kuanyinchiao Formation at Shuanghe, Southern Sichuan, Southwest China. *Geological Journal of China Universities*, 15(03), 304–317 (in Chinese with English abstract). doi: [10.1016/S1874-8651\(10\)60080-4](https://doi.org/10.1016/S1874-8651(10)60080-4).
- Li Y, Wang JP, Zhang YY, Gu CG. 2008. Paleoclimate interpretation of carbonate rocks at the Ordovician-Silurian transition in South China. *Progress in Natural Science*, 18(11), 1264–1270 (in Chinese). doi: [10.3321/j.issn:1002-008X.2008.11.008](https://doi.org/10.3321/j.issn:1002-008X.2008.11.008).
- Li Y, Matsumoto R, Kershaw S. 2005. Sedimentary and biotic-evidence of a warm-water enclave in the cooler oceans of the Latest Ordovician glacialphase, Yangtze Platform, South China. *The Island Arc*, 14(4), 623–635. doi: [10.1111/j.1440-1738.2005.00472.x](https://doi.org/10.1111/j.1440-1738.2005.00472.x).
- Liu BJ, Xu XS, Xia WJ, Wu YL, Pu XC, Chen HM, Zhang JQ, Zhou MK, Pan XN, Wang LT. 1994. *Paleogeographic Atlas of South China*. Beijing, Science Press, 1–188 (in Chinese).
- Liu BJ, Xu XS, Pan XN, Huang HQ, Xu Q. 1993. The Editorial Broad for Collected Works of Lithofacies and the Crustal Evolution of South China Palaeocontinents. Beijing, Science Press, 30–35 (in Chinese).
- Liu W, Xu XS, Feng XT, Sun YY. 2010. Radiolarian siliceous rocks and palaeoenvironmental reconstruction for the Upper Ordovician Wufeng Formation in the Middle-Upper Yangtze area. *Sedimentary Geology and Tethyan Geology*, 30(3), 65–70 (in Chinese with English abstract). doi: [10.3969/j.issn.1009-3850.2010.03.010](https://doi.org/10.3969/j.issn.1009-3850.2010.03.010).
- Liu W, Xu XS, Yu Q, Yan JF, Men YP, Zhang HQ. 2012. Lithofacies palaeogeography of the Late Ordovician Hirnantian in the Middle-Upper Yangtze region of China. *Journal of Chengdu University of technology (natural science edition)*, 39(1), 32–39 (in Chinese with English abstract). doi: [10.3969/j.issn.1671-9727.2012.01.005](https://doi.org/10.3969/j.issn.1671-9727.2012.01.005).
- Ma YS, Cai YY, Zhao PR. 2018. China's shale gas exploration and development: Understanding and practice. *Petroleum Exploration and Development*, 45(4), 1–14 (in Chinese with English abstract). doi: [10.11698/PED.2018.04.03](https://doi.org/10.11698/PED.2018.04.03).
- Mou CL, Ge XY, Xu XS, Zhou KK, Liang W, Wang XP. 2014. Lithofacies palaeogeography of the Late Ordovician and its petroleum geological significance in Middle-Upper Yangtze region. *Journal of Palaeogeography*, 16(4), 427–440 (in Chinese with English abstract). doi: [10.7605/gdxb.2014.04.036](https://doi.org/10.7605/gdxb.2014.04.036).
- Mou CL, Ge XY, Yu Q, Men X, Liu W, He JL, Liang W. 2019. Palaeoclimatology and provenance of black shales from Wufeng-Longmaxi Formations in southwestern Sichuan Province: From geochemical records of Well Xindi-2. *Journal of Palaeogeography (Chinese Edition)*, 21(5), 835–854 (in Chinese with English abstract). doi: [10.7605/gdxb.2019.05.057](https://doi.org/10.7605/gdxb.2019.05.057).
- Mou CL, Ge XY, Zhou KK, Wang XP. 2015. Lithofacies palaeogeography in Late Ordovician Wufeng age in southwestern Sichuan. *Geology in China*, 42(1), 192–198 (in Chinese with English abstract). doi: [10.3969/j.issn.1000-3657.2015.01.015](https://doi.org/10.3969/j.issn.1000-3657.2015.01.015).
- Mou CL, Wang XP, Wang QY, Zhou KK, Liang W, Ge XY, Chen XW. 2016. Relationship between sedimentary facies and shale gas geological conditions of the Lower Silurian Longmaxi Formation in southern Sichuan Basin and its adjacent areas. *Journal of Palaeogeography*, 18(3), 457–472 (in Chinese with English abstract). doi: [10.7605/gdxb.2016.03.022](https://doi.org/10.7605/gdxb.2016.03.022).
- Mou CL, Wang XP, Wang QY, Ge XY, Zan BW, Zhou KK, Chen XW, Liang W. 2023. *Lithofacies Paleogeography and Geological Survey of Shale Gas*. Berlin, Springer, 1–255.
- Mou CL, Xu XS. 2010. Sedimentary evolution and petroleum geology in South China During the Early Palaeozoic. *Sedimentary Geology and Tethyan Geology*, 30(3), 24–29 (in Chinese with English abstract). doi: [10.3969/j.issn.1009-3850.2010.03.004](https://doi.org/10.3969/j.issn.1009-3850.2010.03.004).
- Mou CL, Zhou KK, Liang W, Ge XY. 2011. Early Paleozoic sedimentary environment of hydrocarbon source rocks in the middle-upper Yangtze Region and petroleum and gas exploration. *Acta Geologica Sinica*, 85(4), 1–7 (in Chinese with English abstract). doi: [CNKI:11-1951/P.20110330.0842.025](https://doi.org/CNKI:11-1951/P.20110330.0842.025).
- Nie HK, Wang H, He ZL, Wang RY, Zhang PX, Peng YM. 2019. Formation mechanism, distribution and exploration prospect of normal pressure shale gas reservoir: A case study of Wufeng Formation-Longmaxi Formation in Sichuan Basin and its periphery. *Acta Petrologica Sinica*, 40(2), 131–143, 164 (in Chinese with English abstract). doi: [10.7623/syxb201902001](https://doi.org/10.7623/syxb201902001).
- Pu BL, Dong DZ, Wang FQ, Wang YM, Huang JL. 2020. The effect of

- sedimentary facies on Longmaxi shale gas in southern Sichuan Basin. *Geology in China*, 47(1), 111–120 (in Chinese with English abstract). doi: [10.12029/gc20200109](https://doi.org/10.12029/gc20200109).
- Rong JY. 1984. Ecostratigraphical Evidence of the regression in the Late Ordovician and influences of glacier activities in the Upper South China. *Journal of Stratigraphy*, 8(1), 19–29 (in Chinese with English abstract). doi: [10.19839/j.cnki.dcxzz.1984.01.003](https://doi.org/10.19839/j.cnki.dcxzz.1984.01.003).
- Rong JY, Chen X. 1987. Faunal differentiation, Biofacies and Lithofacies Pattern of Late Ordovician (Ashgillian) in South China. *Acta Palaeontologica Sinica*, 26(5), 507–545 (in Chinese with English abstract). doi: [10.19800/j.cnki.aps.1987.05.001](https://doi.org/10.19800/j.cnki.aps.1987.05.001).
- Su XH. 2017. Sedimentological and geochemical responses of geological events at the Ordovician-Silurian boundary: the example from Wufeng-Longmaxi Formations in the Qiliao section, Shizhu. Chengdu, Chengdu University of Technology, Master thesis (in Chinese with English abstract).
- Shi ZS, Yuan Y, Zhao Q, Sun SS, Zhou TQ, Chen F. 2022. Paleogeomorphology and oil-bearing shale characteristics of the Wufeng-Longmaxi shale in southern Sichuan Basin, China. *Natural Gas Geoscience*, 33(12), 1969–1985 (in Chinese with English abstract). doi: [10.14027/j.issn.1000-0550.2021.162](https://doi.org/10.14027/j.issn.1000-0550.2021.162).
- Shu LS, Yu JH, Jia D, Wang B, Shen WZ, Zhang YQ. 2008. Early Paleozoic orogenic belt in the eastern segment of South China. *Geological Bulletin of China*, 27(10), 1581–1593 (in Chinese with English abstract). doi: [10.3969/j.issn.1671-2552.2008.10.001](https://doi.org/10.3969/j.issn.1671-2552.2008.10.001).
- Shu LS. 2012. An analysis of principal features of tectonic evolution in South China Block. *Geological Bulletin of China*, 31(7), 1035–1053 (in Chinese with English abstract). doi: [10.3969/j.issn.1671-2552.2012.07.003](https://doi.org/10.3969/j.issn.1671-2552.2012.07.003).
- Wang HY, Shi ZS, Sun SS, Zhao Q, Zhou TQ, Chen F, Bai WH. 2023. Microfacies types and distribution of epicontinental shale: A case study of the Wufeng-Longmaxi shale in southern Sichuan Basin, China. *Petroleum Exploration and Development*, 50(1), 51–64 (in Chinese with English abstract). doi: [0.11698/PED.20220400](https://doi.org/10.11698/PED.20220400).
- Wang JP, Deng XJ, Wang G, Li Y. 2012. Types and biotic successions of Ordovician reefs in China. *Chinese Science Bulletin*, 57(10), 1160–1168. doi: [10.1007/s11434-011-4936-7](https://doi.org/10.1007/s11434-011-4936-7).
- Wang XP, Mou CL, Ge XY, Chen XW, Zhou KK, Wang QY, Liang W. 2015. Mineral component characteristics and evaluation of black rock series of Longmaxi Formation in Southern Sichuan and its periphery. *Acta Petrolei Sinica*, 36(2), 150–162 (in Chinese with English abstract). doi: [10.7623/syxb201502003](https://doi.org/10.7623/syxb201502003).
- Wang YM, Chen B, Li XJ, Wang H, Chang LC, Jiang S. 2018. Sedimentary characteristics of upwelling facies shale in Lower Silurian Longmaxi Formation, northeast Sichuan area. *Acta Petrolei Sinica*, 39(10), 1092–1102 (in Chinese with English abstract). doi: [10.7623/syxb201810002](https://doi.org/10.7623/syxb201810002).
- Wang YC. 2016. Lithofacies Paleogeography in Hirnantian Stage of Late Ordovician in Upper Yangtze Region. Chengdu, Chengdu University of technology, Master thesis, 1–57 (in Chinese with English abstract).
- Wang YC, Mou CL, Liang W, Wang XP, Chen C. 2015. Sedimentary facies and Palaeogeography of the northern margin of the Yangzi block during the Hirnantian (Late Ordovician). *Sedimentary Geology and Tethyan Geology*, 35(3), 19–26 (in Chinese with English abstract). doi: [10.3969/j.issn.1009-3850.2015.03.003](https://doi.org/10.3969/j.issn.1009-3850.2015.03.003).
- Xu XS, Liu BJ, Mou CL, Wang ZJ, Qiu DZ, Yu Q, Lou XY, Wan F, Tan QY, Chen M. 2004. Marine Sedimentary Basins' Analysis and Oil and Gas Resources in the Middle-Western China. Beijing, Geological Publishing House, 1–199 (in Chinese).
- Xu XS, Wan F, Yin FG, Chen M. 2001. Environment facies, Ecological facies and Diagenetic facies of Baota Formation of Late Ordovician. *Journal of Mineralogy and Petrology*, 21(3), 64–68. doi: [10.19719/j.cnki.1001-6872.2001.03.010](https://doi.org/10.19719/j.cnki.1001-6872.2001.03.010).
- Xu XS, Xu Q, Pan GT, Liu QH, Fan YN, He YX. 1996. The Comparison between the Continental Evolution of South China and the Global Paleogeography. Beijing, Geological Publishing House, 42–63 (in Chinese).
- Yan DT, Chen DZ, Wang QC, Wang JG. 2010. Large-scale climatic fluctuations in the latest Ordovician on the Yangtze block, South China. *Geology*, 38, 599–602. doi: [10.1130/G30961.1](https://doi.org/10.1130/G30961.1).
- Yan DT, Wang QC, Chen DZ, Wang JG, Qiu Z. 2011. The Late Ordovician drowning of the Yangtze carbonate platform and its geologic significance. *Chinese Journal of Geology*, 46(1), 42–51 (in Chinese with English abstract). doi: [10.3969/j.issn.0563-5020.2011.01.005](https://doi.org/10.3969/j.issn.0563-5020.2011.01.005).
- Yan JF, Yu Q, Liu W, Men YP. 2010. Perspectives of the Lower Palaeozoic shale gas resources in the middle upper Yangtze area. *Sedimentary Geology and Tethyan Geology*, 30(3), 96–103 (in Chinese with English abstract). doi: [10.3969/j.issn.1009-3850.2010.03.015](https://doi.org/10.3969/j.issn.1009-3850.2010.03.015).
- Yang YM, Chen YL, Liu SY, Deng B, Xu H, Chen LQ, Li DY, Yin YZ, Li Y. 2021. Status, potential and prospect of shale gas exploration and development in the Sichuan Basin and its periphery. *Natural Gas Industry*, 41(1), 42–58 (in Chinese with English abstract). doi: [10.3787/j.issn.1000-0976.2021.01.004](https://doi.org/10.3787/j.issn.1000-0976.2021.01.004).
- Yu Q, Mou CL, Zhang HQ, Tan QY, Xu XS, Yan JF. 2011. Sedimentary evolution and reservoir distribution of northern Upper Yangtze plate in Sinian-Early Paleozoic. *Acta Petrologica Sinica*, 27(3), 672–680 (in Chinese with English abstract). doi: [CNKI:SUN:YSXB.0.2011-03-008](https://doi.org/10.3787/j.issn.1000-0976.2011.03.008).
- Zhan RB, Liu JB, Ian GP, Jin JS, Li GP. 2010. Biodiversification of Late Ordovician Hirnantia Fauna on the Upper Yangtze Platform, South China. *Science China: Earth Science*, 53(12), 1800–1810. doi: [10.1007/s11430-010-4071-3](https://doi.org/10.1007/s11430-010-4071-3).
- Zhang JC, Shi M, Wang DS, Tong ZZ, Hou XD, Niu JL, Li XQ, Li ZM, Zhang P, Huang YQ. 2021. Fields and directions for shale gas exploration in China. *Natural Gas Industry*, 41(8), 69–80 (in Chinese with English abstract). doi: [10.3787/j.issn.1000-0976.2021.08.007](https://doi.org/10.3787/j.issn.1000-0976.2021.08.007).
- Zhang JC, Li Z, Wang DS, Xu LF, Li ZM, Niu JL, Chen L, Sun YH, Li QC, Yang ZK, Zhao XX, Wu XZ, Lang Y. 2022. Shale gas accumulation patterns in China. *Natural Gas Industry*, 42(8), 78–95 (in Chinese with English abstract). doi: [10.3787/j.issn.1000-0976.2022.08.007](https://doi.org/10.3787/j.issn.1000-0976.2022.08.007).
- Zhou MK, Wang RZ, Li ZM, Yuan ER, He YX, Yang JL, Hu CM, Xiong DQ, Lou XY. 1993. Lithofacies and Paleogeography of South China. Beijing, Geological Publishing House, 1–96 (in Chinese).
- Zou CN, Dong DZ, Wang YM, Li XJ, Huang JL, Wang SF, Guan QZ, Zhang CC, Wang HY, Liu HL, Bai WH, Liang F, Lin W, Zhao Q, Liu DX, Yang Z, Liang PP, Sun SS, Qiu Z. 2015. Shale gas in China: Characteristics, challenges and prospects. *Petroleum Exploration and Development*, 42(6), 689–701 (in Chinese with English abstract). doi: [10.11698/PED.2015.06.01](https://doi.org/10.11698/PED.2015.06.01).
- Zou CN, Yang Z, Dong DZ, Zhao Q, Chen ZH, Feng YL, Li JR, Wang XN. 2022. Formation, distribution and prospect of unconventional hydrocarbons in source rock strata in China. *Earth Science*, 47(5), 1517–1533 (in Chinese with English abstract). doi: [10.3799/dqkx.2022.160](https://doi.org/10.3799/dqkx.2022.160).