

Traditional Chinese medicine for long COVID-19: the potential roles of immunity remodeling

Qianru Zhao¹, Annalisa Bucchi², Xinyu Duan³, Zhihua Yang⁴, David Molla², Mirko Baruscotti^{2,*}, Yanyan Wang^{5,*}

¹Institute of Traditional Chinese Medicine, Tianjin University of Traditional Chinese Medicine, Tianjin, China; ²Department of Biosciences, University of Milano, Milano, Italy; ³School of Integrative Medicine, Tianjin University of Traditional Chinese Medicine, Tianjin, China; ⁴First Teaching Hospital of Tianjin University of Traditional Chinese Medicine, National Clinical Research Center for Chinese Medicine Acupuncture and Moxibustion, Tianjin, China; ⁵School of Medical Technology, Tianjin University of Traditional Chinese Medicine, Tianjin, China

Abstract

Given that the immunity imbalance in patients with Long COVID-19 (LC) may pose a significant global health and economic post-pandemic burden, there is an emergent need to identify therapeutic targets and treatment options. Traditional Chinese medicine (TCM), as an evidence-based therapeutic approach, can effectively improve the sequelae of LC patients by eliminating pathogenic factors. The purpose of this paper is to discuss how immune remodeling contributes to the pathogenesis of LC, the clinical evidence supporting TCM's treatment of LC, and the mechanism of TCM modulating immune remodeling and relieving chronic inflammation to develop new ideas for the treatment of LC as well as the development of drugs. Data were retrieved using appropriate keywords from a variety of internet databases, including PubMed and Web of Science. Current evidence shows that LC can affect multiple organ systems, and its prominent manifestations include respiratory complications, neurological symptoms and cardiovascular dysfunction. Immunoassay showed a characteristic increase in interleukin 6 (IL-6), interferon gamma (IFN- γ), and T helper (Th)17/regulatory T (Treg) imbalance. TCM interventions have shown great therapeutic potential, with active compounds such as baicalin reducing lung inflammation and ginsenosides improving heart function. Clinical research reports that Qingfei Paidu decoction (QFPD) can effectively alleviate respiratory symptoms, and Sini powder (SNP) has antidepressant effects. TCM interventions can be tailored based on the specific clinical symptoms of individual patients. This article elucidates the crucial role of inflammation and immune dysfunction in alleviating multiple organ symptoms of LC. TCM used in LC treatment is an important source of new molecules. These new molecules may act synergistically to combat adverse effects such as COVID-19 infection-induced inflammation and oxidative stress.

Keywords: Immunity remodeling, Inflammation, Long COVID-19, Multi-system complications, SARS-CoV-2, Traditional Chinese Medicine

Graphical abstract: <https://links.lww.com/AHM/A192>.

Introduction

Due to the severe acute respiratory syndrome coronavirus 2 (SARS-CoV-2), Coronavirus disease 2019 (COVID-19) has been spreading around the world^[1]. The increase in immunity, the development of vaccines, and new therapies have been developed, and especially novel rapid formulation have greatly reduced the death rates^[2]. As the number of individuals recovering from SARS-CoV-2 infection continues to rise, an increasingly worrying issue is the long COVID-19 (LC)^[3], which likely impacts over 62% of acute patients^[4]. LC is a broad classification encompassing various ongoing or new-onset health issues that emerge following the initial recovery from a SARS-CoV-2 infection^[5–6]. Due to the lack of medical information about LC, patients with LC experience feelings of being ignored and disbelieved, as well as

the fear of having to live with these symptoms forever. With the continued spread of SARS-CoV-2 variants, millions of people worldwide are likely to suffer from LC symptoms^[7–8].

According to recent joint guidelines, there are three phases of COVID-19 infection: “Acute COVID-19” (signs and symptoms occurring up to 4 weeks after infection), “ongoing symptomatic COVID-19” (up to 12 weeks after infection), and “post-COVID-19 syndrome” (beyond 12 weeks)^[9–10]. Based on this classification, LC, also named as “chronic COVID,” “Long Haulers” or “Post COVID syndrome,” covers both “ongoing symptomatic COVID-19” phase and “post-COVID-19 syndrome” phase^[11]. During the long period following SARS-CoV-2 infection, patients may present with a variety of clinical symptoms^[11]. A current challenge of public

Qianru Zhao, Annalisa Bucchi, and Xinyu Duan contributed equally to this work.

*Corresponding author. Mirko Baruscotti, E-mail: mirko.baruscotti@unimi.it; Yanyan Wang, E-mail: wangyanyan@tjutc.edu.cn.

How to cite this article: Zhao QR, Bucchi A, Duan XY, Yang ZH, Molla D, Baruscotti M, Wang YY. Traditional Chinese medicine for long COVID-19: the potential roles of immunity remodeling. *Acupunct Herb Med* 2025;5(4):400–419. doi: 10.1097/HM9.000000000000175

Received 03 April 2025 / Accepted 16 November 2025

Copyright © 2025 Tianjin University of Traditional Chinese Medicine. This is an open-access article distributed under the terms of the Creative Commons Attribution-Non Commercial-No Derivatives License 4.0 (CCBY-NC-ND), where it is permissible to download and share the work provided it is properly cited. The work cannot be changed in any way or used commercially without permission from the journal.

health services is therefore to first understand the effects and complications of LC^[12], and then to properly manage them.

LC exhibits a remarkably broad clinical scope, affecting individuals across all disease severity levels, from critical cases to mild-to-moderate infections, and spanning diverse populations. This includes children, adults, outpatients, discharged patients, and even those who have tested negative for SARS-CoV-2, highlighting its extensive reach beyond traditional disease classifications^[13–17]. Clinically, the recovered patients from COVID-19 continue to have many symptoms for several months^[13,16]. The median time from SARS-CoV-2 infection to the assessment was 141 days. A total of 201 individuals completed the baseline assessment, with a mean age of 45 years (ranging from 21 to 71 years). Notably, 42% of the individuals reported 10 or more symptoms, and 60% were diagnosed with severe post-COVID-19 syndrome. The most commonly reported symptoms included fatigue (98%), muscle aches (87%), breathlessness (88%), and headaches (83%)^[13]. In addition, according to a cohort study based on data from 1,733 patients carried out 6 months after hospitalization, 75% of Wuhan hospital-discharged patients still suffered from physical or mental health symptoms. The most prevalent indicators included exhaustion or muscle weakness (63%), insomnia (26%), and depression or anxiety (23%)^[18]. Some of the less common symptoms are cognitive difficulties, headaches, chest and joint pains, loss of smell and taste, coughing, loss of hair, arrhythmias, diarrhea, nausea, and metabolic disorders (Figure 1)^[19–22].

Relevant evidence shows that traditional Chinese medicine (TCM) can treat clinical symptoms of LC such as shortness of breath, weakness, heartburn, chest tightness, breath-holding, cough, sweating, dry mouth, thirst, muscle aches, nasal congestion, sore throat, anxiety and depression, improve lung function, improve pulmonary fibrosis, reduce the inflammatory index of the body, and improve the immune function of patients in LC patients^[23–24]. To provide new ideas for treatment and drug development for LC, we review the role of immune remodeling in the pathogenesis of LC, the clinical evidence, and the mechanism of TCM modulating immune remodeling to treat LC.

Complications of LC

Respiratory system

LC involves many systems of the body, and specific symptoms and duration vary from patient. The acute infection symptoms of COVID-19 usually last for days to weeks, while the symptoms of LC can last for weeks, months, or even years^[9,25].

LC patients often experience respiratory symptoms, including dyspnea, coughing, shortness of breath, chest pain, and pulmonary fibrosis^[26]. The reason for dyspnea is likely related to the fact that the respiratory system is the main target of SARS-CoV-2^[27]. After infection, the virus enters the human body through the respiratory tract, causing diffuse alveolar damage and inflammation, which will then cause damage to the respiratory mucosa,

affect the normal operation of the respiratory system, weaken the normal contraction and expansion of respiratory muscles, cause dyspnea, shortness of breath, hypoxia, and other uncomfortable symptoms^[28].

SARS-CoV-2, as a respiratory infectious disease associated with pulmonary cell infection, can lead to excessive deposition of extracellular matrix components causing alveolar and pulmonary interstitial fibrosis. In addition, the virus invasion can initiate the immune defense cascade of the body, and the excessive immune response can trigger an inflammatory cytokine storm, leading to inflammatory damage and dysfunction of lung tissues and organs further enhancing the pulmonary fibrosis^[29].

Cough is a common respiratory symptom, but the persistent presence of cough exacerbates the patient's subjective discomfort. As a result of residual virus of SARS-CoV-2, inflammatory cells invade the airways and lung tissues and release inflammatory mediators, leading to congestion and edema of the airway mucosa, damage and shedding of the mucosal epithelium. The inflammatory response of the cough receptor increases the neuronal sensitivity. Chronic inflammation of LC causes an increase in intracellular Ca²⁺ which opens the pannexin channel and releases adenosine triphosphate that in turn stimulates and activates the airway sensory neurons. This leads to cell depolarization potentially triggering the opening of voltage-gated Na⁺ channel causing cough^[30].

Neurological system

The neurological manifestations of LC involve the central nervous system (cognitive impairment, headache, memory issues, sleep disorders, depression, etc)^[31] and the peripheral nervous system (muscle weakness, myalgias, hyposmia/hypogeusia, tinnitus, etc)^[32–33]. The presence of SARS-CoV-2 implicates neurotropic effects in the pathogenesis of LC^[34–35]. After the acute recovery period, inflammatory and immune responses to SARS-CoV-2 infection may endure for several months, leading to persistent systemic inflammation characterized by cytokines such as interferon gamma (IFN- γ), interleukin (IL)-2, IL-6, IL-17, and chemokine (C-X-C motif) ligand 10 (CXCL 10)^[36].

The prolonged release of cytokines in LC patients with high macrophage scavenger receptor 1 leads to a disruption of the blood–brain barrier and neuropsychiatric manifestations^[37]. Inflammatory molecules and immune cells spreading into the central nervous system may result in neuropsychiatric manifestations and induce a persistent neuroinflammatory response. In addition, the serum inflammatory marker IL-6 inhibits the cleavage of von Willebrand factor, promoting platelet aggregation^[35], further leading to mitochondrial dysfunction or impaired cerebral autoregulation^[32].

In contrast, persistent hyposmia is a manifestation of the peripheral nervous system that likely arises from the enduring impact of direct viral harm to the olfactory epithelium^[36]. Due to the fact that SARS-CoV-2 can lead to persistent reduction of symbiotic organisms and dysbiosis of the gut microbiota in the gastrointestinal tract, long-term virus shedding can cause the microbial dysbiosis and may lead to dysfunction of the brain-gut axis^[38].

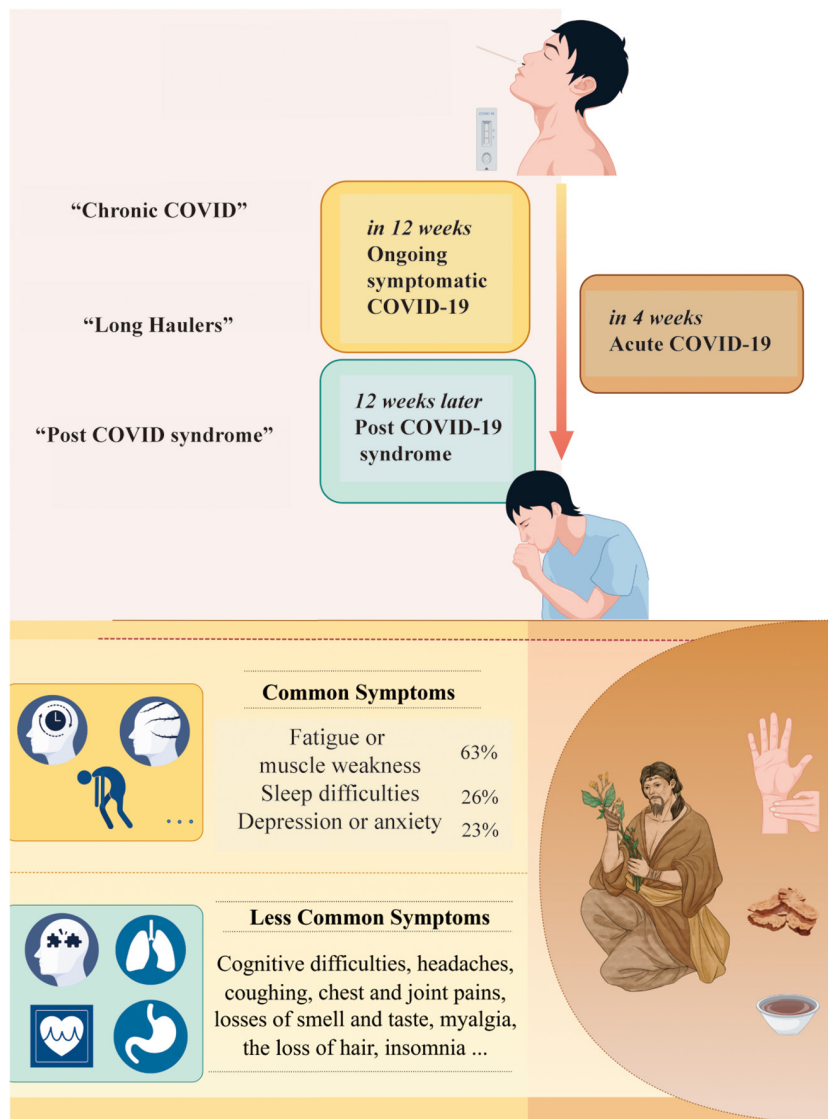


Figure 1. Definition and overview of LC. LC: Long COVID-19.

Cardiovascular system

Long COVID syndrome is characterized by a wide range of cardiac complications, including myocardial inflammation, ventricular dysfunctions, arrhythmias, and cardiovascular autonomic vegetative dysregulation; in general, the severity of these symptoms correlates with the severity of acute COVID-19 infection^[39-40]. Due to the large impact of COVID infection in the entire world, the vicious interaction between cardiac complications and LC is now considered of major concern in public health^[39]. Mechanisms behind cardiovascular manifestations of LC are still unclear, but increasing evidence indicates that they can originate from not resolved cardiac tissue damage or caused by persistent systemic inflammation and oxidative stress^[19,40-41].

Although the SARS-CoV-2 virus is generally cleared from the organism within a few weeks after the onset of the infection, and the presence of cardiac issues directly associated with it are normally resolved, longer viral permanence has also been observed^[42].

The large spectrum of symptoms associated with cardiac LC clearly points to complex and likely multifactorial mechanisms, including both direct viral cell infection,

systemic immune response, and autonomic dysfunctions leading to altered homeostatic responses. Viral infection of cardiac and vascular cells starts from the interaction between the virus and the angiotensin-converting enzyme 2 (ACE2) receptor and then progresses by activating a transductional cascade leading to myocardial inflammation and cardiac tissue damage and dysfunction. The presence of pro-inflammatory markers has indeed been detected in some patients with LC and persistent inflammation can trigger a maladaptive process ultimately leading to increased cardiac fibrosis. Interestingly, inflammation has not only been associated with myocardial infarction but also with the loss of electrical stability (atrial fibrillation, palpitations, and tachycardia) caused by Ca²⁺ homeostasis dysregulation, reduction in K⁺ currents, and altered cell-to-cell connection *via* Connexin 43. In an interesting study, Clemens et al.^[43] evaluated the effect of viral infection on the electrophysiological properties of human induced pluripotent stem cell-derived cardiomyocytes. These authors observed the formation of cellular syncytia as well as the development of cellular arrhythmic behaviors and alterations in the Ca²⁺ handling processes. Arrhythmic conditions (ie, sinus tachycardia

and prolonged QT interval^[40]) have been reported, and this evidence may be associated with a direct effect of inflammatory stress at the cellular level. Indeed, inflammatory cytokines (eg, IL-6 and tumor necrosis factor alpha [TNF- α]) may alter cardiac repolarization due to inhibition of potassium currents. Pharmacological treatment with antibiotics and antivirals can also be proarrhythmic because of cardiac toxicity on K⁺, Na⁺, and Ca²⁺ ion channels. However, some authors suggest that autonomic dysfunction also plays a major role in cardiac LC symptoms^[41] since the continuous systemic and myocardial inflammation may lead to an initial overactivation of the vagal response, subsequently followed by a rebound effect due to exacerbated sympathetic activation. This sequela of events may well explain some of the often-reported arrhythmic conditions, such as sinus tachycardia and postural orthostatic tachycardia.

Endocrine system

Endocrine imbalance is a significant feature of LC. Widespread damage of the endocrine system can worsen immune and metabolic disorders, such as endothelial dysfunction, hyperthyroidism, insulin resistance, and adrenal insufficiency^[44-46]. SARS-CoV-2 infection can cause and exacerbate type 1 diabetes (T1DM) and type 2 diabetes (T2DM)^[47]. Infection and inflammation are the powerful driving forces of diabetes^[48]. Patients with diabetes are more likely to have syndromes because of the chronic inflammation of LC. There is a decrease in anti-inflammatory cytokines due to impaired insulin signaling, and the expression of pro-inflammatory cytokines which inhibit insulin signaling TNF- α , IL-6, and IL-1 β is elevated, thereby increasing insulin resistance. The insulin resistance increases the risk of respiratory and cardiopulmonary symptoms in patients with LC.

The thyroid gland is the main organ that maintains many long-term functions of the body, especially cardiovascular, respiratory, and catabolic functions^[49]. LC initiates the immune dysregulation leading to the release of inflammatory cytokines, especially IL-6 which leads to thyroid dysfunction by disrupting desiodases and thyroid transporters. The T3 level is inversely proportional to IL-6, while thyroid-stimulating hormone (TSH) and T4 slightly decrease, leading to the abnormalities of thyroid dysfunction^[50]. Endocrine manifestation can also lead to multi-systemic manifestations.

Gastrointestinal system

Gastrointestinal symptoms are common in acute COVID-19; indeed, loss of appetite, constipation, abdominal pain, diarrhea, nausea, and vomiting are commonly observed in LC patients^[16,51-52]. These symptoms are probably related to the continuous replication of the virus which is present in the gastrointestinal tract even after the respiratory tract has become negative. Interestingly, since ACE2 receptors are mostly expressed in small gastrointestinal microvilli^[53-54], SARS-CoV-2 may be amplified and transmitted through the gastrointestinal system. The high affinity of SARS-CoV-2 for the gastrointestinal system may thus explain why gastrointestinal symptoms appear before respiratory symptoms and why the virus can persist in stools even after the illness has subsided. The composition of individual gut microbiota may also affect the susceptibility and response of SARS-CoV-2 (Figure 2)^[38].

The inflammatory and immunological dysfunction of LC patients

The persistent and recurrent LC symptoms are caused by sequelae of organ damage, persistent virus, chronic

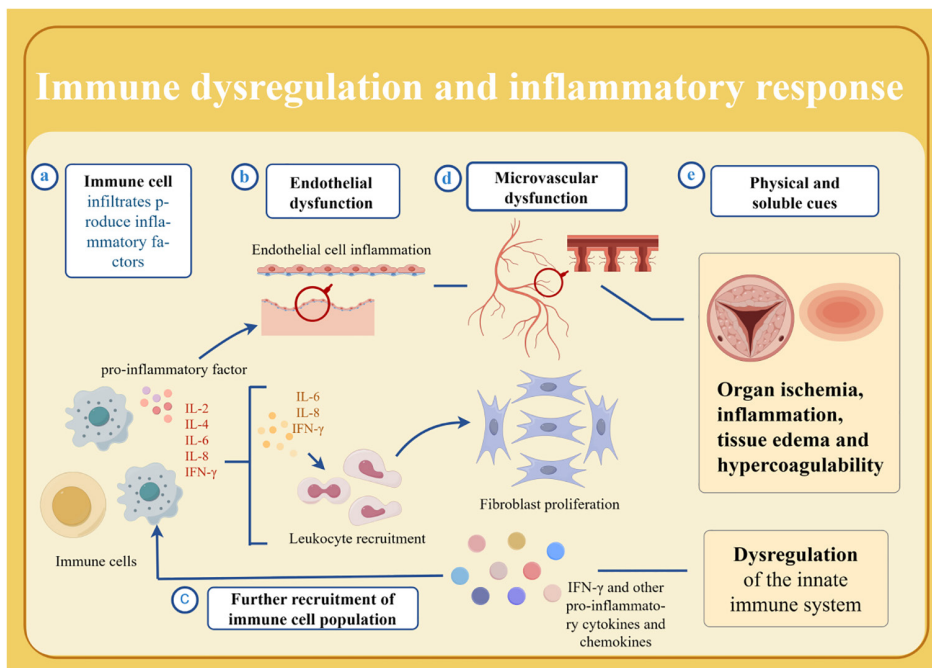


Figure 2. LC symptoms and their effects on several organs with various pathologies. The effects of extended long COVID-19 on multiple organs are demonstrated, along with a wide range of symptoms. IFN- γ : Interferon gamma; IL: Interleukin; LC: Long COVID-19.

inflammation, and/or immune response/autoantibody production^[55-57]. Notably, inflammatory and immunological dysfunctions play key roles in maintaining LC. Indeed, the persistence of clinical symptoms following the resolution of the initial infection is associated with immunological alterations characterized by inflammation and reduced immune regulation^[58-60]. The persistence or reinfected virus^[56] contributes to the pathogenesis of LC by inducing chronic inflammation, triggering excessive activation of the adaptive immune system, and prompting immune dysregulation, and the process can then progress to immune exhaustion, often leading to impaired tissue repairment (Figure 3)^[42,56,61].

Chronic inflammation in LC

Chronic inflammation is one of the main underlying causes of LC^[62-63]. Typical ongoing clinical manifestations of chronic inflammation in LC patients are chest pain, dyspnea, cough, fatigue, headache, depression, and anxiety^[64-65]. The chronic inflammation state with higher inflammatory markers induces not only direct cellular damage and endothelial dysfunction but also a dysregulated inflammatory response. According to available data, the most concerned and frequently described biomarkers reported in LC patients are: increased pro-inflammatory levels of IL-2^[66], IL-6^[67], IL-8^[68], and IFN- γ ^[68]. However, it has also been reported an increase in anti-inflammatory factors such as IL-4 and IL-10^[69-70].

Pro-inflammatory cytokines like IL-6, IL-8, and IFN- γ are pivotal in chronic inflammation. These cytokines promote leukocyte recruitment to preserve chronic inflammation and induce fibroblast proliferation^[71]. Endothelial activation by pro-inflammatory cytokines is a part of the normal immune system defense, but long-term inflammatory stimulation can lead to sustained endothelial dysfunction^[72]. Endothelial dysfunction is the primary factor contributing to microvascular dysfunction by altering the vascular equilibrium toward vasoconstriction, consequently resulting in organ ischemia, inflammation, tissue edema, and hypercoagulability^[73]. IL-6, which has multiple potential targets and plays an essential role in cardiovascular complications, could potentially induce T lymphocyte activation and thus it is implicated in the inflammatory response^[74-76]. Inflammatory responses may cause endothelial dysfunction, resulting in diffuse thrombotic microangiopathy. This may contribute to heart thrombosis and result in myocardial infarction^[77-78]. It is believed that the resultant nervous symptoms of LC are caused by the same ongoing inflammation. Fatigue is an important aspect of one of the most manifestations in LC with a prevalence in patients of about 60%^[64,79] and it is likely that fatigue may be caused by systemic chronic inflammation and cell-mediated immune mechanisms^[80]. A large number of epidemiological and genetic studies have also demonstrated that inflammatory cytokines are associated with the development of neuropsychiatric symptoms in patients with LC^[11,81]. Chronic inflammation

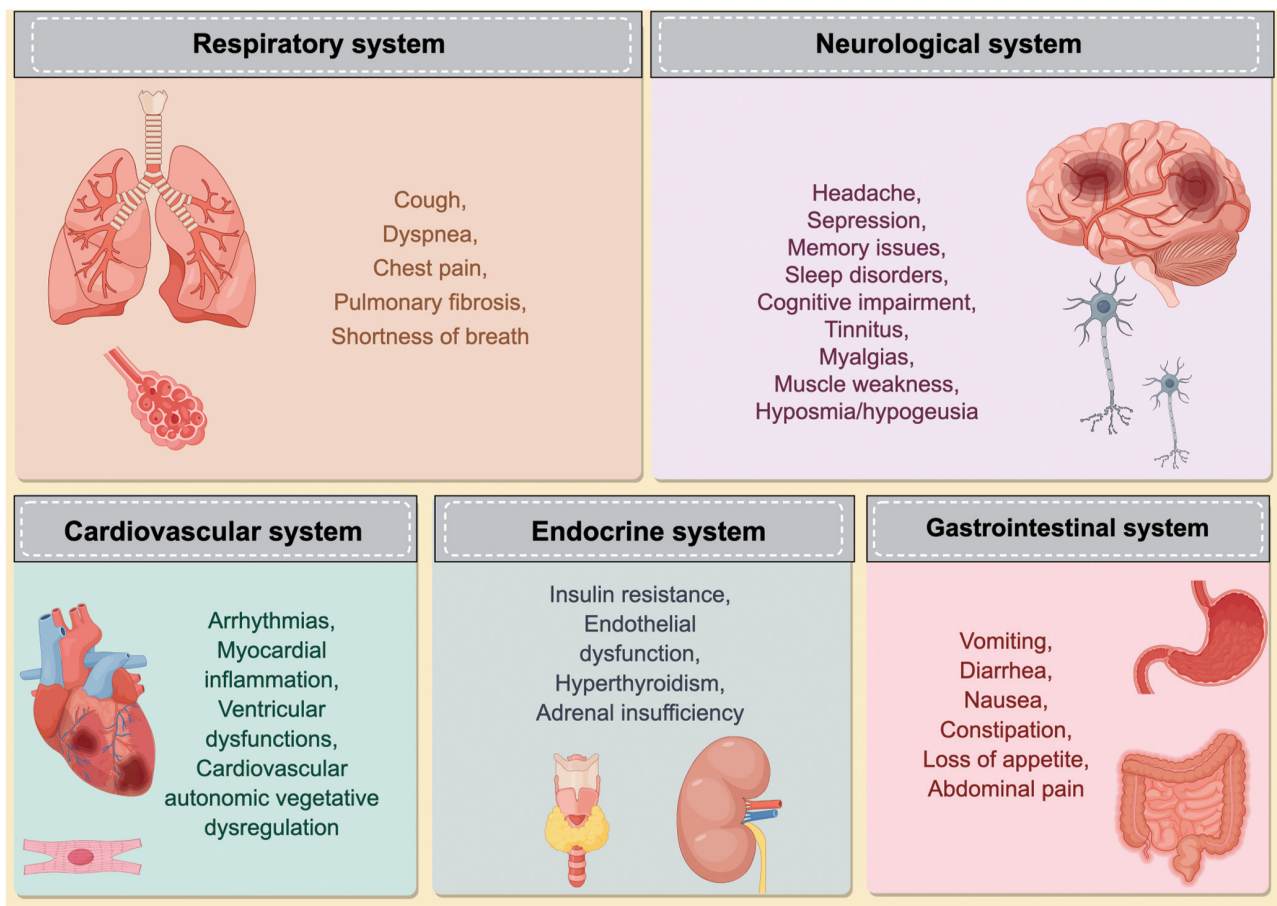


Figure 3. LC Immune dysregulation and inflammatory response. The persistence or reinfection of the virus induces chronic inflammation, triggers excessive activation of the adaptive immune system, and promotes immune dysfunction. LC: Long COVID-19.

is linked to fatigue and IL-6 could be the possible cause of this symptom^[81].

Chronic inflammation persists in patients who recover from COVID-19, leading to irreversible fibrotic interstitial lung disease, although abnormal respiratory function may be reversed over time^[63,82–83]. The pro-inflammatory cytokine IL-8 is an important cytokine that chemoattracts neutrophils and causes tissue damage, thus playing a critical role in mediating the destruction of normal airway structure, airway structural remodeling, and long-term persistence of airway inflammation^[84–85]. When IL-8 damages endothelial and epithelial cells of the lung, fibroblasts proliferate, migrate, and differentiate into myofibroblasts with resultant deposition of collagen and fibronectin^[86]. Dyspnea can result from irreversible fibrotic interstitial lung disease caused by chronic inflammation^[82]. High levels of IFN- γ can impact the resolution of inflammation-induced lung injury and thrombosis which is associated with prolonged symptoms related to coagulation disorders and immune-mediated tissue damage^[70,87]. A hyper-inflammatory response in LC patients, together with chronic inflammation, is a potential trigger for LC heterogeneous symptoms. Clearly, inflammasome activation and the resulting innate and adaptive immunity dysregulation impair the organ function.

Immune dysregulation

It is thought that long-lasting symptoms may be caused by the immune response, like other chronic viral infections^[56,88]. Innate and adaptive immune systems make up the human immune system. Continuous immune activation can cause tissue damage, early aging, and immune exhaustion^[61]. The virus components trigger the innate immune response, which is further propagated by tissue damage and dysbiosis^[61]. Increased IL-6 cytokine levels impact negatively on natural killer (NK) cells and affect viral clearance and immune regulation^[89]. Patients with LC exhibit elevated levels of IFN- γ and IL-2, which trigger the stimulation of effector T cells with pro-inflammatory characteristics and enable the production of a robust immune response to combat the virus. However, without the necessary signals to attract activated T cells, the inflammatory conditions resulting from these cytokines are inadequate for generating an effective antiviral response^[70,90]. High concentrations of IL-6 and IL-10 have been demonstrated to stimulate the activation of myeloid cells, oxidative stress, and damage to the endothelial cells^[91]. Dysregulation of the innate immune system is certainly one of the major contributing factors of LC^[61,92].

Adaptive immune responses play a very important role as well^[56,93]. SARS-CoV-2, like other chronic viral infections, appears to severely damage the functional subsets of cluster of differentiation CD4⁺ and CD8⁺ T cells^[56,94]. Proper T cell activation, but ineffective T cell recruitment, is a feature of the failed antiviral response observed in LC patients supporting the persistence of virus. Chronic infection can result in a rapid loss of antigen-specific CD4⁺ T cells and promote CD4⁺ T cell exhaustion with diminished effector functionality^[95–96]. CD4⁺ Tex (exhausted T cells) form a T cell lineage different from the clearly defined CD4⁺ T cell phenotypes and accelerate CD8⁺

T cell exhaustion by producing IL-10^[95,97]. Increased levels of IL-10 and IL-4 inhibit T-cell responses, causing exhaustion of T-cells and regulatory T cell polarization that evades the antiviral immune response^[70,98]. Furthermore, the programmed death-1 (PD-1) as well as T cell immunoglobulin domain and mucin domain-3 (Tim-3) subpopulations, which represent T cell exhaustion, are increased in patients with LC^[99]. During chronic viral infections, T cell exhaustion is the main cause of immune dysfunction^[100]. The adaptive immunity of LC patients also showed a Th1-predominance^[59]. Th1-mediated inflammatory cytokine may play a potential role in myocardial damage^[18,101]. Increased IL-6 levels lead to the transformation of activated T helper (Th) cells to Th17 lineage in patients. IL-6 signal activates Th cells, inhibits regulatory T (Treg) cells, and promotes Th17 to Treg imbalance^[102–104]. Th17/Treg dysregulation involved in processes such as learning, emotion, sleep-related brain processes, and neuronal energy metabolism provides a reasonable link that can explain how chronic inflammation manifests as fatigue and sleeping difficulties of LC^[74,81,104].

TCM formulae clinically alleviate LC by immunity remodeling

There is a limitation of LC treatment medications. Considering the pathophysiology of LC discussed previously, therapeutic strategies should focus on immunity remodeling. By reviewing the relevant literature, we summarize the scientific basis for the use of TCM to treat LC based on immunity remodeling.

TCM drugs used in LC treatment represent an important source of novel molecules that may synergistically act to contrast both COVID-19 infection and undesired side effects such as the inflammation processes and oxidative stress (Figure 4).

Respiratory system

Several studies have shown that Chinese herbal formulas improve pulmonary fibrosis in COVID-19 patients. Convalescent COVID-19 prescription (CCP) has an anti-fibrotic effect by inhibiting TNF- α , IL-6, transforming growth factor beta 1 (TGF- β 1), and matrix metalloproteinase 9 (MMP9)^[105]. As a result of downregulating vascular endothelial growth factor (VEGF) expression, Shenling Baizhu powder (SLBZ) can reduce the symptoms of pulmonary fibrosis^[106]. In a recent study, the effect of Buzhong Yiqi decoction (BZYQ) on the recovery period of COVID-19 was examined, and results confirmed that this drug could eliminate inflammation, reduce lung damage, and regulate immunity^[107]. Qingfei Paidu decoction (QFPD) and Xuanfei Baidu decoction (XFBD) can improve cough and sputum by reducing IL-6 and TNF- α levels, inhibiting nuclear factor-kappa B (NF- κ B) activities, while attenuating macrophage exocytosis^[107].

In addition, Bufei Huoxue capsules (BFHX) greatly reduce the residual lung damage and impair exercise tolerance in convalescent patients infected with COVID-19 and promote their recovery^[108]. By reducing inflammation and pathological responses, BFHX significantly reduces IL-4,

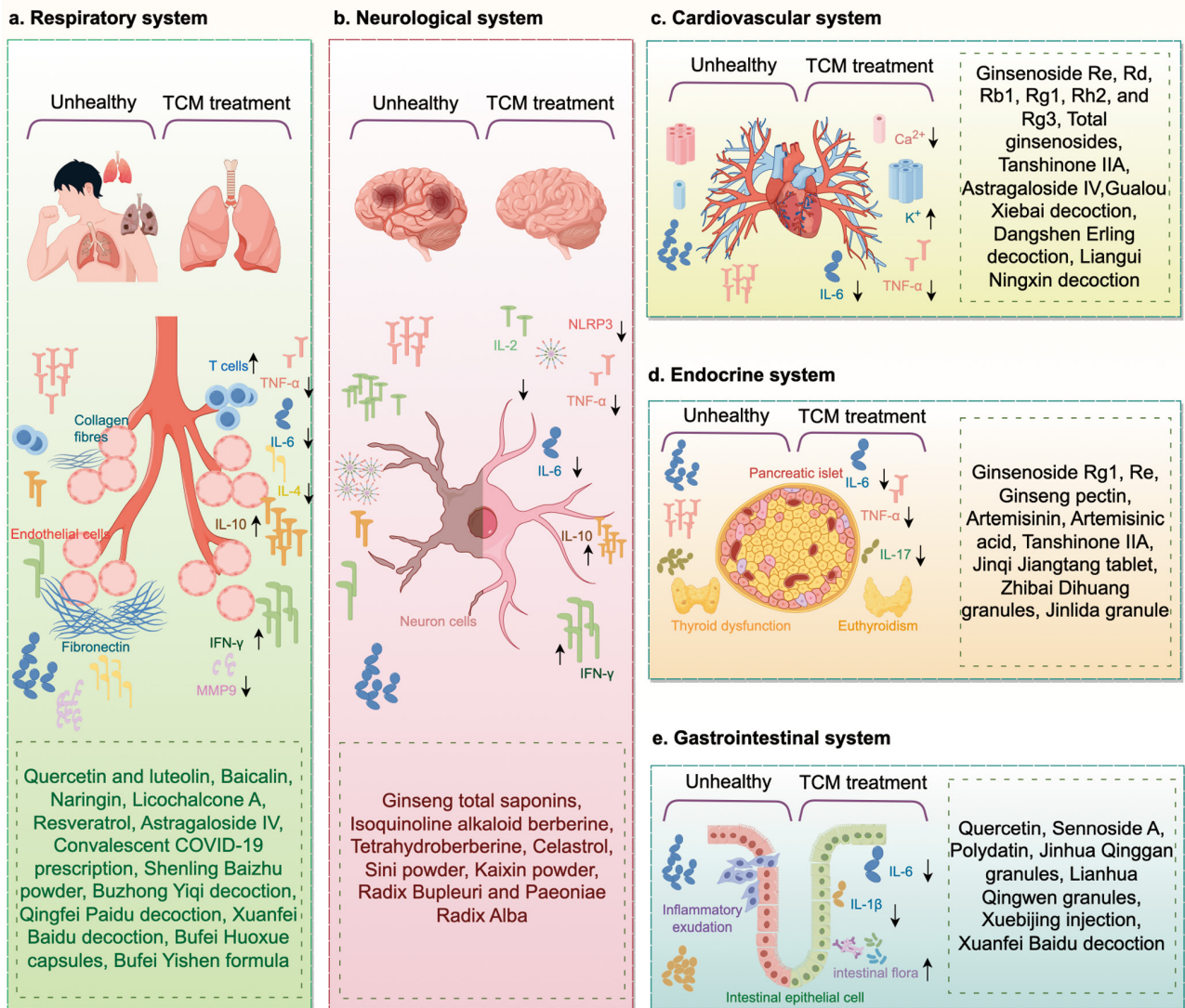


Figure 4. TCM immunity remodeling and anti-inflammation. IFN- γ : Interferon gamma; IL: Interleukin; MMP9: Matrix metalloproteinase 9; NLRP3: Nod-like receptor protein 3; TCM: Traditional Chinese medicine; TNF: Tumor necrosis factor.

IL-6, IL-10, IL-8, and TNF- α and keratinocyte growth factor as well as secretory immunoglobulin A and collagen fibers for improving lung function^[107]. Moreover, the Bufei Yishen formula (BYF) restores the balance of Th17/Treg, enhances anti-inflammatory cytokine production, and decreases pro-inflammatory cytokine production, all of which contribute to improving lung function^[109].

Chinese herbal formulae exhibit unique combinatorial principles for immune regulation. These formulae establish network-level actions across immune cells, cytokine networks, and oxidative stress systems, demonstrating systemic advantages in immune homeostasis restoration.

Many herbs have a significant role in immune remodeling. Several botanical drugs, such as *Codonopsis pilosula* (Franch.) Nannf., *Ophiopogon japonicus* (Thunb.) Ker Gawl., *Atractylodes macrocephala* Koidz., *Adenophora triphylla* (Thunb.) A.DC. and *Astragalus membranaceus* Fisch. ex Bunge, have been shown to increase leukocytes, stimulate T and B lymphocyte proliferation, improve phagocyte capacity, and balance immunity^[110-111].

Many compounds also participate in immune remodeling to alleviate respiratory symptoms. Flavonoids can boost immunity and reduce damage to the immune system^[112]. During COVID-19 recovery, quercetin and luteolin can regulate immune function, promote T lymphocyte differentiation, and suppress pathological CD4⁺ T lymphocytes^[113]. As a primary flavonoid monomer in *Scutellaria baicalensis* Georgi, baicalin exerts anti-asthma effects by reducing IL-4, IL-6, IL-8, and IL-17 levels, rebalancing Th17 and Treg responses, and increasing IL-10 and IFN^[114-115]. Moreover, baicalin reduces TGF- β 1 and VEGF levels for airway remodeling in asthmatic mice^[116]. The compound naringin, derived from *Citrus maxima* (Burm.) Merr., an effective TCM remedy for cough, suppresses airway hyperreactivity (AHR) and inflammation by inhibiting eosinophils and Th2 cells and by enhancing Th1 cells^[117]. A component of *Glycyrrhiza glabra* L., licochalcone A (LA) can inhibit Th2-type cytokines, prevent monocyte adhesion, and reduce inflammation and oxidative stress to treat asthma^[118].

Resveratrol, a natural phenol extracted from *Reynoutria japonica* Houtt., suppresses AHR, reduces eosinophilia and mucus hypersecretion by inhibiting IL-4 and IL-5; in addition, it also reduces pulmonary inflammation and superoxide production by regulating the expression of adenosine 5'-monophosphate-activated protein kinase (AMPK) in the lungs^[119].

Furthermore, Astragaloside IV (AS-IV), the principal active ingredient found in *Astragalus membranaceus* Fisch. ex Bunge, has shown effective activity in decreasing inflammation and oxidative stress, reducing AHR, collagen deposition, mucus production by increasing Tregs and IFN- γ levels to treat asthma^[120].

Phytochemicals with immunomodulatory effects share a “structure-target” regulatory model. Their functional groups (eg, phenolic hydroxyls, glycosidic chains) bind immune signal molecules, exerting multi-target effects on Th cell balance, oxidative stress, and cytokines. This forms a bidirectional mechanism: suppressing excessive immunity while boosting deficits. Such structure-based modulation defines a universal paradigm for phytomedicines in immune diseases, linking chemical structure to immunological balance.

Neurological system

Sini powder (SNP) can effectively combat depression^[121]. Research has shown that SNP can prolong sleep time and regulate the circadian rhythm of patients with depression^[122]. In addition, animal experiments have shown that SNP can regulate hypothalamic pituitary adrenal axis, downregulate serum corticosterone and plasma adrenocorticotropin, and increase levels of hippocampal glucocorticoid receptors to treat depression^[123].

The Kaixin powder (KXP), an herbal formula, can effectively improve depressive symptoms by reducing the levels of IL-1 β , IL-2, and TNF- α in the hippocampus of mice^[124].

In addition, the *Radix Bupleuri* and *Paeoniae Radix Alba* drug combination is widely accepted among the many classical antidepressant prescriptions in TCM^[125]. To treat depression through reducing oxidative stress damage and inflammation, drug combinations of the *Radix Bupleuri* and *Paeoniae Radix Alba* are effective at reducing peroxidation products, and inhibiting nod-like receptor protein 3 (NLRP3) inflammasome expression, IL-6, and TNF- α secretion^[125–126].

These formulae demonstrate systems-level therapeutic strategies that contrast with single-target pharmaceuticals by concurrently addressing: (1) neuroendocrine dysfunction, (2) neuroinflammatory cascades, and (3) oxidative damage—representing a paradigm of network pharmacology that aligns with the multicomponent pathology of depression and neurodegenerative diseases. Their multitarget mechanisms support enhanced efficacy in treatment-resistant cases with favorable safety profiles.

A variety of TCMs exhibit anti-fatigue properties, with particular efficacy in alleviating fatigue symptoms subsequent to viral infections. Persistent fatigue ranks among the most prevalent manifestations of LC. Ginseng, which primary bioactive constituents include saponins and polysaccharides, is closely implicated in neuroprotective effects

and the modulation of neurotransmission, with a distinct therapeutic role in managing fatigue^[127]. Furthermore, the administration of *acanthopanax senticosus* injections has been shown to mitigate postoperative fatigue syndrome, while extracts of *acanthopanax senticosus* also exert a significant fatigue-improving effect^[127].

Ginseng total saponins (GTS) serve as antidepressants by reducing inflammation. Research has shown that GTS treatment alleviates depression-like behavioral impairment and decreases IL-6 and TNF- α mRNA in the hippocampus^[128]. The isoquinoline alkaloid berberine, isolated from *Coptis chinensis* Franch., also shows an antidepressant-like effect by improving mitochondrial and spinal morphology in the hippocampus^[129]. As a result, the chemical reactions initiated by berberine convert tyrosine into dopamine, which can lead to better brain functioning^[130].

A compound from *Corydalis Rhizoma* called tetrahydroberberine shows antianxiety properties and plays a significant neuroprotective role in Parkinson disease by blocking ATP-sensitive K⁺ ion channels in the substantia nigra pars compacta^[131]. The compound celastrol, from *Tripterygium wilfordii* Hook.f., relieves neuroinflammatory pain by inhibiting the expression of cyclooxygenase-2, upregulating the expression of sterile- and armadillo-motif-containing proteins, and reducing levels of IL-6, IL-17, and TNF- α ^[132–133].

Key neuroactive compounds show immunomodulatory effects *via* multiple mechanisms. These compounds bidirectionally regulate neural circuits and immune responses, addressing neuropsychiatric disorders by targeting neuroplasticity and neuroinflammation.

Cardiovascular system

The Gualou Xiebai decoction (GLXB) possesses significant inflammatory and cardiac-protecting properties. GLXB can protect myocardial structure and ameliorate cardiac function by decreasing the level of IL-6^[134]. Dangshen Erling decoction (DSEL) can downregulate IL-6 and TNF- α to improve myocardial inflammation, remodel heart function, and reduce myocardial fibrosis^[135]. Liangui Ningxin decoction (LGNX), an effective antiarrhythmic formula, can shorten the duration and alleviate the severity of arrhythmias by maintaining intracellular Ca²⁺ homeostasis^[136].

These formulae exemplify the TCM principle of “simultaneous treatment of the symptomatic and root causes” by addressing immediate electrophysiological abnormalities (eg, arrhythmias), while systemically modulating the inflammatory microenvironment that drives cardiovascular pathology progression, offering advantages over single-target conventional drugs in chronic cardiovascular disease management.

Herbal products typically used in cardiovascular TCM target specific cardiac ion channels. Ginseng has been considered an effective herb for treating diseases for centuries, but its effects on cardiovascular diseases have only recently been confirmed through research^[137]. Ca²⁺ channels can be inhibited by ginsenosides, including Re, Rh2, and Rg3. Hypertensive remodeling can be reduced by Ginsenoside Rd by reversing Ca²⁺ channel^[138]. Ginsenoside Re modulates cardiac K⁺ channel activation

through nitric oxide^[139]. As well as regulating ion channels, total ginsenosides inhibit right ventricular hypertrophy^[139]. In addition, ginsenoside Rg1 protects from left ventricular hypertrophy^[140–141]. Ginsenoside Rb1 reduces myocardial infarction, ginsenoside Re inhibits electro-mechanical alternans^[142].

Tanshinone IIA (Tan IIA), the main component of *Codonopsis pilosula* Nannf., has anti-inflammatory and anti-oxidant effects and has been used for treating cardiomyopathy, arrhythmia, and congenital heart defects^[143]. Tan IIA regulates immune cell activation through a reduction in inflammation mediators and a restoration of abnormal signaling pathways that are crucial for immune cell development and function^[144].

The saponin component AS-IV isolated from *Astragalus membranaceus* Fisch. ex Bunge can improve cardiac function, inhibit cardiac hypertrophy and ventricular remodeling by reducing oxidative stress, inhibiting calpain-1 activation, enhancing mitochondrial superoxide dismutase and catalase activity, and inhibiting transcription factor p65 (p65) and NF- κ B^[145]. AS-IV increases nuclear factor erythroid-2-related factor 2 and regulates the Ca²⁺-mediated calcineurin signaling pathway for improving ventricular function and structure^[146]. Additionally, AS-IV can reduce inflammation mediators such as TNF- α and IL-6^[147].

The key cardiovascular-active compounds demonstrate dual cardioprotective and immunomodulatory properties through distinct mechanisms. These compounds collectively represent a class of “cardio-immunomodulators” that uniquely bridge electrophysiological stabilization and immune homeostasis.

Endocrine system

There is evidence suggesting that chronic low-grade inflammation causes insulin resistance, which in turn leads to T2DM. The inflammatory markers associated with diabetes include adipokines, chemotactic proteins, TNF- α , IL-1 β , and IL-17^[148]. Diabetes patients can benefit from Jinqi Jiangtang Tablet (JQJT)^[149]. There is evidence that JQJT could reduce the circulating Th17 frequency and serum IL-17 levels, as well as decrease C-reactive protein concentrations and NF- κ B phosphorylation levels^[149].

Zhibai Dihuang granule (ZBDH) can alleviate hyperthyroidism by regulating complement activation and inflammatory response, and by improving antigen recognition ability^[150].

Jinlida granule are used to treat T2DM, improving insulin resistance, promoting insulin secretion, and lowering blood lipid levels^[151–153]. With anti-inflammatory effects involving the NF- κ B pathway, it could significantly improve hypothalamic-pituitary-thyroid axis dysfunction in DM^[154].

Traditional Chinese endocrine formulae exhibit integrated metabolic-immune modulation through sophisticated multicomponent approaches. These formulae embody the TCM principle of “holistic regulation” by simultaneously addressing metabolic disorders and their underlying inflammatory drivers, offering a multidimensional therapeutic approach superior to

single-target antidiabetic medications in managing diabetes-associated immune dysregulation.

Radix Ginseng can alleviate insulin resistance and promote immune homeostasis^[155]. Ginsenoside is a significant active component in *Panax ginseng* C.A.Mey. and is known to elicit proven pharmacological effects. Ginsenoside Rg1 can improve insulin resistance and reduce the expression level of IL-1 β in the blood^[156]. Ginsenoside Re can regulate insulin resistance, modulate glucose metabolism, and regulate inflammatory cytokines^[157]. Additionally, ginseng pectin can inhibit hyperglycemia and immune dysfunction independently or synergistically^[158].

Artemisinin isolated from *Artemisia annua* L. can restore islet function and improve the microcirculation of the pancreas^[159]. Artemether, as a derivative of artemisinin, is capable of reducing fasting blood glucose levels, improving insulin sensitivity, and increasing glucose tolerance^[160]. Artemisinic acid, which is isolated from artemisinin, is also capable of significantly reducing IL-6 and improving insulin resistance^[161]. Tan IIA can also reduce glucose intolerance and insulin resistance by regulating AMPK signaling and decreasing TNF- α and IL-6 levels^[162].

The key endocrine-active compounds demonstrate dual metabolic and immunoregulatory properties through distinct mechanisms. These compounds collectively represent a class of “immunometabolic regulators” that bridge endocrine function and immune balance, offering advantages over conventional antidiabetic drugs by simultaneously targeting metabolic dysfunction and chronic low-grade inflammation.

Gastrointestinal system

Jinhua Qinggan granule (JHGG)^[163], Lianhua Qingwen granule (LHQW)^[164], Xuebijing injection (XBJ)^[165], Huashi Baidu granule (HSBD)^[166], QFPD, and XFBD^[167] were all highly effective in preventing and controlling COVID-19, and have played a crucial role in combating epidemics by treating diseases according to the patient's personality^[168–169]. Considering gastrointestinal disorders, LHQW is the most effective for nausea, XBJ is the most effective for diarrhea, LHQW is the best for vomiting, JHGG is the best for inappetence^[168]. XFBD reduces weight loss and tissue damage of the colon, attenuates intestinal disorders associated with inflammation, and improves intestinal flora^[170]. This drug also modulates intestinal immunity by remodeling the Th1/Th2 ratio and has a therapeutic effect on respiratory disorders, such as pulmonary fibrosis and acute lung injury^[171–173].

Traditional Chinese gastrointestinal formulae exhibit integrated gut-immune modulation through sophisticated multicomponent strategies. These formulae achieve superior clinical outcomes compared to single-target therapies by holistically addressing both gastrointestinal symptoms and their immunopathological underpinnings.

Flavonoids can alleviate COVID-19-induced gastrointestinal symptoms. Quercetin is extracted from natural plants and can inhibit viral entry into host cells and reduce diarrhea induced by SARS-CoV-2^[174]. Quercetin can inhibit the inflammatory storm associated with

Table 1
Potential immunity remodeling effects of TCM

Systems	Categories	Compounds/formulas name	Mechanism	Symptoms/ disease	Reference
Respiratory system	Compounds	<i>Codonopsis pilosula</i> (Franch.) Nannf.; <i>Ophiopogon japonicus</i> (Thunb.) Ker Gawl.; <i>Atractylodes macrocephala</i> Koidz.; <i>Adenophora triphylla</i> (Thunb.) A.DC.; <i>Astragalus membranaceus</i> Fisch. ex Bunge	Increase leukocytes, stimulate T and B lymphocyte proliferation, improve phagocyte capacity, and balance immunity	-	[120, 183]
		Quercetin and luteolin	Regulate immune function, promote T lymphocyte differentiation, and suppress pathological CD4 ⁺ T lymphocytes	LC	[113]
		Baicalin	Reduce IL-4, IL-6, IL-8, IL-17, TGF-β1 and VEGF levels, rebalance Th17 and Treg responses, and increase IL-10 and IFN	Asthma	[114–116, 184]
		Naringin	Inhibit eosinophils and Th2 cells, enhancing Th1 cells	Cough	[117]
		Licochalcone A	Inhibit Th2-type cytokines, prevent monocyte adhesion, and reduce inflammation and oxidative stress	Asthma	[118]
	Resveratrol	Inhibit IL-4 and IL-5	Asthma	[119, 185]	
	Astragaloside IV	Decrease the levels of TNF-α and increasing Tregs and IFN-γ	Asthma	[120, 183]	
	Formulas	Convalescent COVID-19 prescription	Inhibit TNF-α, IL-6, TGF-β1 and MMP9	LC, Pulmonary fibrosis	[105]
	Shenling Baizhu powder	Downregulate VEGF expression	Pulmonary fibrosis	[106]	
	Buzhong Yiqi decoction	Eliminate inflammation, reduce lung damage, and regulate immunity	LC	[107]	
Neurological system	Compounds	Qingfei Paidu decoction; Xuanfei Baidu decoction	Reduce IL-6 and TNF-α levels, inhibit NF-κB activities	-	[186]
		Bufei Huoxue capsules	Reduce IL-4, IL-6, IL-10, IL-8, and TNF-α and keratinocyte growth factor as well as secretory immunoglobulin A and collagen fibers	LC	[107–108]
		Bufei Yishen formula	Restores the balance of Th17/Treg, enhance anti-inflammatory cytokine production and decrease pro-inflammatory cytokine production	Chronic obstructive pulmonary disease	[109, 187]
		Ginseng total saponins	Alleviate depression-like behavioral impairments and decreases IL-6 and TNF-α mRNA	Depression	[128]
	Isoquinoline alkaloid berberine	Improve mitochondrial and spinal morphology	Depression		
	Tetrahydroberberine	Block ATP-sensitive K ⁺ ion channels	Anxiety	[131]	
	Celastrol	Reduce levels of IL-6, IL-17, and TNF-α	Neuroinflammatory pain	[133, 188–189]	
Formulas	Sini powder	Disrupt neurogenesis, increasing blood–brain barrier connections, balancing fibrinolytic activity, inhibiting NLRP3 and IL-6, and balancing the fibrinolytic system	Depression; sleep disorders	[122, 190–191]	
Kaixin powder	Reduce the levels of IL-2, IL-6, TNF-α and increase IL-10, IFN-γ levels	Depression	[192]		
<i>Radix Bupleuri</i> and <i>Paeoniae Radix Alba</i>	Reduce peroxidation products, and inhibit NLRP3 inflammasome expression, IL-6, and TNF-α secretion	Depression	[125–126]		

(Continued)

Table 1
(Continued)

Systems	Categories	Compounds/formulas name	Mechanism	Symptoms/ disease	Reference	
Cardiovascular system	Compounds	Ginsenoside Re, Rh2, and Rg3	Inhibit Ca ²⁺ channels	Hypertension	[138]	
		Ginsenoside Rd	Reverse Ca ²⁺ channel	Hypertension	[138]	
		Ginsenoside Re	Modulate cardiac K ⁺ channel activation through nitric oxide	-	[139]	
		Total ginsenosides	Inhibit right ventricular hypertrophy	-	[139]	
		Ginsenoside Rg1	Protect left ventricular hypertrophy	-	[140–141]	
		Ginsenoside Rb1	Inhibit electromechanical alternans	Myocardial infarction	[142]	
		Tanshinone IIA	Regulate immune cell activation through a reduction in inflammation mediators and a restoration of abnormal signaling pathways	Cardiomyopathy; arrhythmia; congenital heart defects	[144]	
		Astragaloside IV	Reduce oxidative stress, inhibit calpain-1 activation, enhance mitochondrial superoxide dismutase and catalase activity, and inhibit p65 and NF-κB; increase nuclear factor erythroid-2–related factor 2 and regulates the Ca ²⁺ -mediated calcineurin signaling pathway; reduce TNF-α and IL-6	Cardiac hypertrophy and ventricular remodeling	[146–147, 193]	
		Formulas	Gualou Xiebai decoction	Reduce IL-6	Cardiac dysfunction	[134]
			Dangshen Erling decoction	Downregulate IL-6 and TNF-α	Myocardial inflammation, myocardial fibrosis	[135]
Liangui Ningxin decoction	Maintain intracellular Ca ²⁺ homeostasis		Arrhythmias	[136]		
Endocrine system	Compounds	Ginsenoside Rg1	Reduce IL-1β	Insulin resistance	[156]	
		Ginsenoside Re	Modulate glucose metabolism and regulate inflammatory cytokines	Insulin resistance	[157]	
		Ginseng pectin	-	Hyperglycemia and immune dysfunction	[158]	
		Artemisinin	Reduce fasting blood glucose levels, improve insulin sensitivity, and increase glucose tolerance significantly	Insulin resistance	[160]	
		Artemisinic acid	Reduce IL-6	Insulin resistance	[161]	
		Tanshinone IIA	Regulate AMPK signaling and decrease TNF-α and IL-6 levels	Glucose intolerance and insulin resistance	[162]	
		Formulas	Jinqi Jiangtang tablet	Reduce the circulating Th17 frequency and serum IL-17 levels, as well as decrease C-reactive protein concentrations and NF-κB phosphorylation levels	Diabetes	[149, 194]
Zhibai Dihuang granule	Regulate complement activation and inflammatory response, and improve antigen recognition ability		Hyperthyroidism	[150, 195]		
Jinlida granule	Improve hypothalamic-pituitary-thyroid axis dysfunction; regulate NF-κB pathway		T2DM	[151–154]		
Gastrointestinal system	Compounds	Quercetin	Inhibit viral entry into host cells; inhibit inflammatory storm; regulate gastrointestinal hormones and increase gastrointestinal motility	Diarrhea; inappetence; constipation	[174–178]	
		Sennoside A	Regulate the expression of aquaporin, accelerate the peristaltic movement of the colon, and regulate the gut microbiota	Constipation	[179]	

(Continued)

Table 1
(Continued)

Systems	Categories	Compounds/formulas name	Mechanism	Symptoms/disease	Reference
		Polydatin	Reduce colonic oxidative stress and improve colon epithelial barrier dysfunction	Diarrhea and abdominal pain	[180–181]
	Formulas	Jinhua Qinggan granule	-	Inappetence	[163]
		Lianhua Qingwen granule	-	Nausea	[164]
		Xuebijing injection	-	Diarrhea	[165]
		Xuanfei Baidu decoction	Reduce weight loss and colonic tissue damage, and improve intestinal flora	Intestinal disorders associated with inflammation	[170–173]

AMPK: Adenosine 5'-monophosphate-activated protein kinase; IFN- γ : Interferon gamma; IL: Interleukin; LC: Long coronavirus disease 2019; MMP9: Matrix metalloproteinase 9; NF- κ B: Nuclear factor-kappa B; NLRP3: Nod-like receptor protein 3; T2DM: Type 2 diabetes; TCM: Traditional Chinese Medicine; TGF- β 1: Transforming growth factor beta 1; Th: T helper; TNF- α : Tumor necrosis factor alpha; Treg: Th cells inhibits regulatory T; VEGF: Vascular endothelial growth factor.

viral or bacterial infections and improve the appetite of COVID-19 patients^[175–177]. Moreover, quercetin can improve constipation by regulating gastrointestinal hormones and increasing gastrointestinal motility^[178].

Sennoside A is a laxative compound extracted from *Senna alexandrina* Mill. Sennoside A can improve constipation by regulating the expression of aquaporin, accelerating the peristaltic movement of the colon, and regulating the gut microbiota^[179]. Furthermore, Polydatin is a phenolic glucoside extracted from *Reynoutria japonica* Hoult. In addition to improving symptoms of diarrhea and abdominal pain, polydatin reduces oxidative stress of the colon and improves colon epithelial barrier dysfunction^[180–181].

The key gastrointestinal-active compounds demonstrate dual gut-protective and immunoregulatory properties through distinct mechanisms. These compounds collectively target the gut-immune axis through both luminal and systemic mechanisms, offering advantages over conventional gastrointestinal drugs by concurrently addressing symptoms and underlying mucosal immune dysfunction (Tables 1 and 2).

Conclusion

LC impacts multiple organs; for example, it causes abnormalities in nervous, respiratory, cardiovascular, gastrointestinal, and muscle systems. Millions of people worldwide have already been affected by it, and the number keeps increasing^[1,107]. It is important to raise public awareness of LC's risk factors and take appropriate measures to manage it. Currently, there are few diagnostic and treatment options, and clinical trials are necessary to confirm the underlying biological mechanisms, such as persistence of the virus, chronic inflammation, and/or immune response/auto-antibody production. Further research is needed to verify the importance of immune perturbations within affected organs, the immune response to acute infection, chronic inflammation, and immune recovery after infection.

Clinical symptoms of LC patients can be effectively improved by TCM^[182] since data support TCM actions in promoting the repair of damaged organ tissues and

suggest a possible action in reducing the side effects of glucocorticoids, improving cardiopulmonary function, and relieving anxiety. Immune dysregulation contributes to the pathogenesis of LC patients; regulating the immune remodeling of the body may thus represent an important mechanism for the treatment of LC in TCM. However, there are still undefined aspects associated with the treatment of LC with TCM. The effectiveness of TCM in treating LC is supported by extensive evidence-based medicine, but there is a lack of guidance and tracking management for patients with TCM in home rehabilitation. The research and treatment methods of TCM that relate to LC must be further organized and optimized. The efficacy and mechanism of TCM in treating LC needs to be clarified in the future through clinical trials and basic research, as well as through the development of more effective rehabilitation plans based on a combination of Chinese and Western medicine.

Conflict of interest statement

Mirko Baruscotti is an editorial board member of this journal. The other authors declare no conflict of interest.

Funding

This research was funded by the National Key R&D Program of China (2021YFE0200300), Science and Technology Program of Tianjin (22JCQNJC00480), Tianjin Education Commission (2022KJ151), and Graduate Research Innovation Project of TUTCM (YJSKC-20240013).

Author contributions

Yanyan Wang and Mirko Baruscotti performed conceptualization, writing—review and editing, supervision. Qianru Zhao, Annalisa Bucchi, and Zhihua Yang performed writing—original draft preparation. Qianru Zhao and David Molla performed visualization. Yanyan Wang performed project administration. All authors have read and agreed to the published version of the manuscript.

Table 2

Composition of formulas

Systems	Formulas	Herb name	References
Respiratory system	CCP	Astragali Radix (Huang qi) Codonopsis Radix (Dang shen) Atractylodes macrocephala Koidz. (Bai zhu) Adenophrae Radix (Nan sha shen) Glehniae Radix (Bei sha shen) Citrus Reticulata (Chen pi) Poria (Fu ling) Ophiopogonis Radix (Mai dong) Radix Salviae (Dan shen) Fritillariae Thunbergii Bulbus (Zhe bei mu) Hirudinis Rhynchobdellae (Shui zhi) Crataegi Folium (Shan zha) Massa Medicata Fermentata (Shen qu) Hordei Fructus Germinatus (Mai ya) Rhizoma Dioscoreae (Shan yao) Eupolyphaga Steleophaga (Tu bie chong) Glycyrrhizae Radix et Rhizoma (Gan cao) Pinelliae Rhizoma (Ban xia)	[105]
	SLBZ	Glycyrrhizae Radix et Rhizoma (Gan cao) Radix Ginseng (Ren shen) Amomi Fructus (Sha ren) Atractylodes Macrocephalae Rhizoma (Bai zhu) Lablab Semen Album (Bai bian dou) Poria (Fu ling) Rhizoma Dioscoreae (Shan yao) Coicis Semen (Yi yi ren) Nelumbinis Semen (Lian zi) Platycodon Grandiflorus (Jie geng)	[106]
	BZYQ	Astragali Radix (Huang qi) Atractylodes macrocephala Koidz. (Bai zhu) Citrus Reticulata (Chen pi) Cimicifugae Rhizoma (Sheng ma) Radix Bupleuri (Chai hu) Radix Ginseng (Ren shen) Glycyrrhizae Radix et Rhizoma (Gan cao) Angelicae Sinensis Radix (Dang gui)	[107, 196]
	QFPD	Asari Radix et Rhizoma (Xi xin) Belamcandae Rhizoma (She gan) Rhizoma Dioscoreae (Shan yao) Farfarae Flos (Kuan dong hua) Aurantii Fructus Immaturus (Zhi shi) Asteris Radix Et Rhizoma (Zi wan) Amygdalus Communis Vas (Ku xing ren) Citrus Reticulata (Chen pi) Zingiberis Rhizoma Recens (Sheng jiang) Scutellariae Radix (Huang qin) Cinnamomi Ramulus (Gui zhi) Ephedra Herba (Ma huang) Pinelliae Rhizoma Praeparatum (Jiang ban xia) Poria (Fu ling) Pogostemonis Herba (Huo xiang) Glycyrrhizae Radix et Rhizoma (Gan cao) Gypsum Fibrosum (Shi gao) Alismatis Rhizoma (Ze xie) Polypori Umbellati Rhizoma (Zhu ling) Atractylodes macrocephala Koidz. (Bai zhu) Radix Bupleuri (Chai hu) Belamcandae Rhizoma (She gan)	[107]

(Continued)

Table 2**(Continued)**

Systems	Formulas	Herb name	References
	XFBD	Citri Grandis Exocarpium (Hua ju hong) Verbenae Herb (Ma bian cao) Ephedra Herba (Ma huang) Glycyrrhizae Radix et Rhizoma (Gan cao) Amygdalus Communis Vas (Ku xing ren) Gypsum Fibrosum (Shi gao) Artemisiae Annuae Herba (Qing hao) Polygoni Cuspidati Rhizoma et Radix (Hu zhang) Lepidii Semen Descurainiae Semen (Ting li zi) Coicis Semen (Yi yi ren) Pogostemonis Herba (Guang huo xiang) Atractylodis Rhizoma (Cang zhu) Imperatae Rhizoma (Mao gen)	[107, 197]
	BFHX	Psoraleae Fructus (Bu gu zhi) Astragali Radix (Huang qi) Radix Paeoniae Rubra (Chishao)	[108]
	BYF	Radix Ginseng (Ren shen) Astragali Radix (Huang qi) Corni Fructus (Shan zhu yu) Lycii Fructus (Gou qi zi) Schisandrae Chinensis Fructus (Wu wei zi) Fritillariae Thunbergii Bulbus (Zhe bei mu) Perilla Frutescens (Zi su) Citrus Reticulata (Chen pi) Epimrdii Herba (Yin yang huo) Radix Paeoniae Rubra (Chi shao) Pheretima (Di long) Ardisiae Japonicae Herba (Ai di cha)	[109]
Neurological system	SNP	Radix Bupleuri (Chai hu) Aurantii Fructus Immaturus (Zhi shi) Paeoniae Radix Alba (Bai shao) Glycyrrhizae Radix et Rhizoma (Gan cao)	[191]
	KXP	Radix Ginseng (Ren shen) Poria (Fu ling) Polygalae Radix (Yuan zhi) Acoritataninowii Rhizoma (Shi chang pu)	[192]
	<i>Radix Bupleuri and Paeoniae Radix Alba</i>	Radix Bupleuri (Chai hu) Paeoniae Radix Alba (Bai shao)	[125]
Cardiovascular system	GLXB	Trichosanthes Kirilowii Maxim (Gua lou) Allii Macrostemonis Bulbus (Xie bai)	[134]
	DSEL	Odonopsis Radix (Dang shen) Atractylodis Macrocephalae Rhizoma (Bai zhu) Smilacis Glabrae Rhixoma (Tu fu ling) Saposhnikoviae Radix (Fang feng) Morindae Officinalis Radix et Rhizoma (Ba ji tian) Glycyrrhizae Radix et Rhizoma (Gan cao)	[135]
	LGNX	Coptidis Rhizoma (Huang lian) Ophiopogonis Radix (Mai dong) Radix Puerariae (Ge gen) Citrus Reticulata (Chen pi) Pinelliae Rhizoma (Ban xia) Poria (Fu ling) Cinnanmomi Cortex (Rou gui) Corydalis Rhizoma (Yan hu suo) Glycyrrhizae Radix et Rhizoma (Gan cao)	[136]
Endocrine system	JQJT	Coptidis Rhizoma (Huang lian) Astragali Radix (Huang qi) Lonicerae Japonicae Flos (Jin yin hua)	[149]

(Continued)

Table 2
(Continued)

Systems	Formulas	Herb name	References
	ZBDH	Corni Fructus (Shan zhu yu) Rehmanniae Radix Praeparata (Shu di huang) Rhizoma Dioscoreae (Shan yao) Phellodendri Chinnsis Cortex (Huang bo) Anemarrhenae Rhizoma (Zhi mu) Cortex Moutan (Mu dan pi) Alismatis Rhizoma (Ze xie) Poria (Fu ling)	[195]
	Jinlida granule	Radix Ginseng (Ren shen) Polygonati Rhizoma (Huang jing) Atractylodis Rhizoma (Cang zhu) Sophorae Flavescentis Radix (Ku shen) Ophiopogonis Radix (Mai dong) Radix Rehmanniae Recens (Di huang) Polygonum Multiflorum Radix Praeparata (He shou wu) Corni Fructus (Shan zhu yu) Coptidis Rhizoma (Huang lian) Anemarrhenae Rhizoma (Zhi mu) Epimrdii Herba (Yin yang huo) Codonopsis pilosula Nannf. Radix Salviae (Dan shen) Poria (Fu ling) Eupatorium Fortunei Turcz (Pei lan) Litchi Semen (Li zhi he) Lycii Cortex (Di gu pi)	[151]
Gastrointestinal system	JHQG	Lonicerae Japonicae Flos (Jin yin hua) Gypsum Fibrosum (Shi gao) Ephedra Herba (Ma huang) Amygdalus Communis Vas (Ku xing ren) Scutellariae Radix (Huang qin) Forsythiae Fructus (Lian qiao) Fritillariae Thunbrgii Bulbus (Zhe bei mu) Anemarrhenae Rhizoma (Zhi mu) Fructus Arctii (Niu bang zi) Artemisiae Annuae Herba (Qing hao) Menthae Herba (Bo he) Glycyrrhizae Radix et Rhizoma (Gan cao)	[163]
	LHQW	Forsythiae Fructus (Lian qiao) Lonicerae Japonicae Flos (Jin yin hua) Ephedra Herba (Ma huang) Amygdalus Communis Vas (Ku xing ren) Isatidis Radix (Ban lan gen) Dryopteridis Crassirhizomatis Rhizoma (Mian ma guan zhong) Houttuyniae Herba (Yu xing cao) Pogostemonis Herba (Guang huo xiang) Radix Rhei Et Rhizome (Da huang) Rhodiolae Crenulatae Radix et Rhizoma (Hong jing tian) Glycyrrhizae Radix et Rhizoma (Gan cao) Mentholum (Bo he nao) Gypsum Fibrosum (Shi gao)	[164]
	XBJ	Chuanxiong Rhizoma (Chuan xiong) Radix Salviae (Dan shen) Radix Paeoniae Rubra (Chi shao) Carthami Flos (Hong hua) Angelicae Sinensis Radix (Dang gui)	[165]

(Continued)

Table 2
(Continued)

Systems	Formulas	Herb name	References
	HSBD	Ephedra Herba (Ma huang) Amygdalus Communis Vas (Ku xin gren) Glycyrrhizae Radix et Rhizoma (Gan cao) Pogostemonis Herba (Huo xiang) Atractylodis Rhizoma (Cang zhu) Pinelliae Rhizoma (Ban xia) Poria (Fu ling) Radix Paeoniae Rubra (Chi shao) Radix Rhei Et Rhizome (Da huang) Astragali Radix (Huang qi) Gypsum Fibrosum (Shi gao)	[166]

BFHX: Bufe Huoxue capsules; BYF: Bufe Yishen formula; BZTQ: Buzhong Yiqi decoction; CCP: Convalescent coronavirus disease 2019 prescription; DSEL: Dangshen Erling decoction; GLXB: Gualou Xiebai decoction; HSBD: Huashi Baidu granule; JHQG: Jinhua Qinggan granule; JQJT: Jinqi Jiangtang tablet; KXP: Kaixin powder; LGNX: Liangui Ningxin decoction; LHQW: Lianhua Qingwen granule; QFPD: Qingfei Paidu decoction; SLBZ: Shenling Baizhu powder; SNP: Sini powder; XBJ: Xuebijing injection; XFBD: Xuanfei Baidu decoction; ZBDH: Zhibai Dihuang granule.

Ethical approval of studies and informed consent

Not applicable.

Acknowledgments

All figures were supported by FigDraw.

Data availability

All data generated or analyzed during this study are included in this published article.

References

- Davis HE, Mccorkell L, Vogel JM, et al. Long COVID: major findings, mechanisms and recommendations. *Nat Rev Microbiol* 2023;21(3):133–146.
- Chung YS, Lam CY, Tan PH, et al. Comprehensive review of COVID-19: epidemiology, pathogenesis, advancement in diagnostic and detection techniques, and post-pandemic treatment strategies. *Int J Mol Sci* 2024;25(15):8155.
- Al-Aly Z, Davis H, Mccorkell L, et al. Long COVID science, research and policy. *Nat Med* 2024;30(8):2148–2164.
- Szabo S, Zayachkivska O, Hussain A, et al. What is really “Long COVID?”. *Inflammopharmacology* 2023;31(2):551–557.
- Ashmawy R, Hammouda EA, El-Maradny YA, et al. Interplay between comorbidities and long COVID: challenges and multidisciplinary approaches. *Biomolecules* 2024;14(7):835.
- Peluso MJ, Deeks SG. Mechanisms of long COVID and the path toward therapeutics. *Cell* 2024;187(20):5500–5529.
- Opsteen S, Files JK, Fram T, et al. The role of immune activation and antigen persistence in acute and long COVID. *J Investig Med* 2023;71(5):545–562.
- Umesh A, Pranay K, Pandey RC, et al. Evidence mapping and review of long-COVID and its underlying pathophysiological mechanism. *Infection* 2022;50(5):1053–1066.
- Shah W, Hillman T, Playford ED, et al. Managing the long term effects of COVID-19: summary of NICE, SIGN, and RCGP rapid guideline. *BMJ* 2021;372:n136.
- Koc HC, Xiao J, Liu W, et al. Long COVID and its management. *Int J Biol Sci* 2022;18(12):4768–4780.
- Garg M, Maralakunte M, Garg S, et al. The conundrum of ‘Long-COVID-19’: a narrative review. *Int J Gen Med* 2021;14:2491–2506.
- Greenhalgh T, Sivan M, Perlowski A, et al. Long COVID: a clinical update. *Lancet* 2024;404(10453):707–724.
- Dennis A, Wamil M, Alberts J, et al. Multiorgan impairment in low-risk individuals with post-COVID-19 syndrome: a prospective, community-based study. *BMJ Open* 2021;11(3):e048391.
- Townsend L, Dowds J, O’Brien K, et al. Persistent poor health after COVID-19 is not associated with respiratory complications or initial disease severity. *Ann Am Thorac Soc* 2021;18(6):997–1003.
- Van Den Borst B, Peters JB, Brink M, et al. Comprehensive health assessment 3 months after recovery from acute coronavirus disease 2019 (COVID-19). *Clin Infect Dis* 2021;73(5):e1089–e1098.
- Lai CC, Hsu CK, Yen MY, et al. Long COVID: an inevitable sequela of SARS-CoV-2 infection. *J Microbiol Immunol Infect* 2023;56(1):1–9.
- Sorensen AIV, Spiliopoulos L, Bager P, et al. A nationwide questionnaire study of post-acute symptoms and health problems after SARS-CoV-2 infection in Denmark. *Nat Commun* 2022;13(1):4213.
- Huang C, Wang Y, Li X, et al. Clinical features of patients infected with 2019 novel coronavirus in Wuhan, China. *Lancet* 2020;395(10223):497–506.
- Yong SJ. Long COVID or post-COVID-19 syndrome: putative pathophysiology, risk factors, and treatments. *Infect Dis (Lond)* 2021;53(10):737–754.
- Truffaut L, Demey L, Bruyneel AV, et al. Post-discharge critical COVID-19 lung function related to severity of radiologic lung involvement at admission. *Respir Res* 2021;22(1):29.
- Carod-Artal FJ. Post-COVID-19 syndrome: epidemiology, diagnostic criteria and pathogenic mechanisms involved. *Rev Neurol* 2021;72(11):384–396.
- Natarajan A, Shetty A, Delanerolle G, et al. A systematic review and meta-analysis of long COVID symptoms. *Syst Rev* 2023;12(1):88.
- Yang ZH, Liu YX, Wang L, et al. Traditional Chinese medicine against COVID-19: role of the gut microbiota. *Biomed Pharmacother* 2022;149:112787.
- Luo D, Liu B, Wang P, et al. Traditional Chinese medicine combined with moxibustion in the treatment of “long-COVID”: a protocol for systematic review and meta-analysis. *Medicine (Baltim)* 2022;101(43):e31447.
- Astin R, Banerjee A, Baker MR, et al. Long COVID: mechanisms, risk factors and recovery. *Exp Physiol* 2023;108(1):12–27.
- Chun HJ, Coutavas E, Pine A, et al. Immunofibrotic drivers of impaired lung function in postacute sequelae of SARS-CoV-2 infection. *Jci Insight* 2021;6(14):e148476.
- Cares-Marambio K, Montenegro-Jiménez Y, Torres-Castro R, et al. Prevalence of potential respiratory symptoms in survivors of hospital admission after coronavirus disease 2019 (COVID-19): a systematic review and meta-analysis. *Chron Resp Dis* 2021;18:14799731211002240.
- Mancini DM, Brunjes DL, Lala A, et al. Use of cardiopulmonary stress testing for patients with unexplained dyspnea post-coronavirus disease. *Jacc-Heart Fail* 2021;9(12):92737.
- Pedersen SF, Ho YC. SARS-CoV-2: a storm is raging. *J Clin Invest* 2020;130(5):2202–2205.
- Morice A, Dicipinigitis P, Mcgarvey L, et al. Chronic cough: new insights and future prospects. *Eur Respir Rev* 2021;30(162):210127.
- Zawilska JB, Kuczynska K. Psychiatric and neurological complications of long COVID. *J Psychiatr Res* 2022;156:349–360.
- Stefanou MI, Palaiodimou L, Bakola E, et al. Neurological manifestations of long-COVID syndrome: a narrative review. *Ther Adv Chronic Dis* 2022;13:20406223221076890.
- Slama Schwok A, Henri J. Long neuro-COVID-19: current mechanistic views and therapeutic perspectives. *Biomolecules* 2024;14(9):1081.
- Raman B, Cassar MP, Tunnicliffe EM, et al. Medium-term effects of SARS-CoV-2 infection on multiple vital organs, exercise

- capacity, cognition, quality of life and mental health, post-hospital discharge. *Eclinicalmedicine* 2021;31:100683.
- [35] Hernández-Fernández F, Valencia HS, Barbella-Aponte RA, et al. Cerebrovascular disease in patients with COVID-19: neuroimaging, histological and clinical description. *Brain* 2020;143:3089–3103.
- [36] Leng AL, Shah MN, Ahmad SA, et al. Pathogenesis underlying neurological manifestations of long COVID syndrome and potential therapeutics. *Cells* 2023;12(5):816.
- [37] Etter MM, Martins TA, Kulsvehagen L, et al. Severe Neuro-COVID is associated with peripheral immune signatures, autoimmunity and neurodegeneration: a prospective cross-sectional study. *Nat Commun* 2022;13(1):6777.
- [38] Zuo T, Zhang F, Lui GCY, et al. Alterations in gut microbiota of patients with COVID-19 during time of hospitalization. *Gastroenterology* 2020;159(3):944–94+.
- [39] Raman B, Bluemke DA, Luscher TF, et al. Long COVID: post-acute sequelae of COVID-19 with a cardiovascular focus. *Eur Heart J* 2022;43(11):1157–1172.
- [40] Gyongyosi M, Alcaide P, Asselbergs FW, et al. Long COVID and the cardiovascular system-elucidating causes and cellular mechanisms in order to develop targeted diagnostic and therapeutic strategies: a joint scientific statement of the ESC working groups on cellular biology of the heart and myocardial and pericardial diseases. *Cardiovasc Res* 2023;119(2):336–356.
- [41] Depace NL, Colombo J. Long-COVID syndrome and the cardiovascular system: a review of neurocardiologic effects on multiple systems. *Curr Cardiol Rep* 2022;24(11):1711–1726.
- [42] Gaebler C, Wang Z, Lorenzi JCC, et al. Evolution of antibody immunity to SARS-CoV-2. *Nature* 2021;591(7851):639–644.
- [43] Clemens DJ, Ye D, Zhou W, et al. SARS-CoV-2 spike protein-mediated cardiomyocyte fusion may contribute to increased arrhythmic risk in COVID-19. *PLoS One* 2023;18(3):e0282151.
- [44] Meng QT, Song WQ, Churilov LP, et al. Psychophysical therapy and underlying neuroendocrine mechanisms for the rehabilitation of long COVID-19. *Front Endocrinol* 2023;14:1120475.
- [45] Ilias I, Diamantopoulos A, Pratikaki M, et al. Glycemia, beta-cell function and sensitivity to insulin in mildly to critically ill COVID-19 patients. *Medicina(Lithuania)* 2021;57(1):68.
- [46] Raghavan S, Leo MD. Histamine potentiates SARS-CoV-2 spike protein entry into endothelial cells. *Front Pharmacol* 2022;13:872736.
- [47] Bornstein SR, Cozma D, Kamel M, et al. Long-COVID, metabolic and endocrine disease. *Horm Metab Res* 2022;54(8):562–566.
- [48] Steenblock C, Schwarz PEH, Ludwig B, et al. COVID-19 and metabolic disease: mechanisms and clinical management. *Lancet Diabetes Endocrinol* 2021;9(11):786–798.
- [49] Dworakowska D, Grossman AB. Thyroid disease in the time of COVID-19. *Endocrine* 2020;68(3):471–474.
- [50] Baldelli R, Nicastrì E, Petrosillo N, et al. Thyroid dysfunction in COVID-19 patients. *J Endocrinol Invest* 2021;44(12):2735–2739.
- [51] Mcmillan P, Turner AJ, Uhal BD. Mechanisms of gut-related viral persistence in long COVID. *Viruses* 2024;16(8):1266.
- [52] Mohammed I, Podhala S, Zamir F, et al. Gastrointestinal sequelae of COVID-19: investigating post-infection complications-a systematic review. *Viruses* 2024;16(10):1516.
- [53] Qi FR, Qian S, Zhang SY, et al. Single cell RNA sequencing of 13 human tissues identify cell types and receptors of human coronaviruses. *Biochem Bioph Res Co* 2020;526(1):135–140.
- [54] Elbeltagi R, Al-Beltagi M, Saeed NK, et al. COVID-19-induced gastrointestinal autonomic dysfunction: a systematic review. *World J Clin Cases* 2023;11(22):5252–5272.
- [55] Raveendran AV, Jayadevan R, Sashidharan S. Long COVID: an overview. *Diabetes Metab Syndr* 2021;15(3):869–875.
- [56] Ramakrishnan RK, Kashour T, Hamid Q, et al. Unraveling the mystery surrounding post-acute sequelae of COVID-19. *Front Immunol* 2021;12:686029.
- [57] Merad M, Blish CA, Sallusto F, et al. The immunology and immunopathology of COVID-19. *Science* 2022;375(6585):1122–1127.
- [58] Townsend L, Dyer AH, Naughton A, et al. Longitudinal analysis of COVID-19 patients shows age-associated T cell changes independent of ongoing ill-health. *Front Immunol* 2021;12:676932.
- [59] Utrero-Rico A, Ruiz-Ruigomez M, Laguna-Goya R, et al. A short corticosteroid course reduces symptoms and immunological alterations underlying long-COVID. *Biomedicines* 2021;9(11):1540.
- [60] Evcik D. Musculoskeletal involvement: COVID-19 and post COVID 19. *Turk J Phys Med Rehabil* 2023;69(1):1–7.
- [61] Hirschenberger M, Hunszinger V, Sparrer KMJ. Implications of innate immunity in post-acute sequelae of non-persistent viral infections. *Cells* 2021;10(8):2134.
- [62] Nalbandian A, Sehgal K, Gupta A, et al. Post-acute COVID-19 syndrome. *Nat Med* 2021;27(4):601–615.
- [63] Spagnolo P, Balestro E, Aliberti S, et al. Pulmonary fibrosis secondary to COVID-19: a call to arms? *Lancet Respir Med* 2020;8(8):750–752.
- [64] Crook H, Raza S, Nowell J, et al. Long COVID-mechanisms, risk factors, and management. *BMJ* 2021;374:n1648.
- [65] Tandon P, Abrams ND, Avula LR, et al. Unraveling links between chronic inflammation and long COVID: workshop report. *J Immunol* 2024;212(4):505–512.
- [66] Queiroz M AF, Neves P, Lima SS, et al. Cytokine profiles associated with acute COVID-19 and long COVID-19 syndrome. *Front Cell Infect Microbiol* 2022;12:922422.
- [67] Valente Coronel PM, Luiz Soares Basilio DC, Teixeira Espinoca I, et al. Involvement of oxidative stress in post-acute sequelae of COVID-19: clinical implications. *Redox Rep* 2025;30(1):2471738.
- [68] Tilikete C, Zamali I, Meddeb Z, et al. Exploring the landscape of symptom-specific inflammatory cytokines in post-COVID syndrome patients. *BMC Infect Dis* 2024;24(1):1337.
- [69] Lorkiewicz P, Waszkiewicz N. Biomarkers of post-COVID depression. *J Clin Med* 2021;10(18):4142.
- [70] Patterson BK, Guevara-Coto J, Yogendra R, et al. Immune-based prediction of COVID-19 severity and chronicity decoded using machine learning. *Front Immunol* 2021;12:700782.
- [71] Kim EY, Moudgil KD. Immunomodulation of autoimmune arthritis by pro-inflammatory cytokines. *Cytokine* 2017;98:87–96.
- [72] Zamora C, Canto E, Vidal S. The dual role of platelets in the cardiovascular risk of chronic inflammation. *Front Immunol* 2021;12:625181.
- [73] Research Accessibility Team (RAT). The microvascular hypothesis underlying neurologic manifestations of long COVID-19 and possible therapeutic strategies. *Cardiovasc Endocrinol Metab* 2021;10(4):193–203.
- [74] Lee CCE, Ali K, Connell D, et al. COVID-19-associated cardiovascular complications. *Diseases* 2021;9(3):47.
- [75] Giannitrapani L, Mirarchi L, Amodeo S, et al. Can baseline IL-6 levels predict long COVID in subjects hospitalized for SARS-CoV-2 disease? *Int J Mol Sci* 2023;24(2):1731.
- [76] Elbadawy HM, Khattab A, El-Agamy DS, et al. IL-6 at the center of cytokine storm: circulating inflammation mediators as biomarkers in hospitalized COVID-19 patients. *J Clin Lab Anal* 2023;37(7):e24881.
- [77] Siripanthong B, Nazarian S, Muser D, et al. Recognizing COVID-19-related myocarditis: the possible pathophysiology and proposed guideline for diagnosis and management. *Heart Rhythm* 2020;17(9):1463–1471.
- [78] Lazznerini PE, Boutjdir M, Capecchi PL. COVID-19, arrhythmic risk, and inflammation: mind the gap! *Circulation* 2020;142(1):7–9.
- [79] Goertz YMJ, Van Herck M, Delbressine JM, et al. Persistent symptoms 3 months after a SARS-CoV-2 infection: the post-COVID-19 syndrome? *ERJ Open Res* 2020;6(4):542–2020.
- [80] Islam MF, Cotler J, Jason LA. Post-viral fatigue and COVID-19: lessons from past epidemics. *Fatigue Biomed Health Behav* 2020;8(2):61–69.
- [81] Kappelmann N, Dantzer R, Khandaker GM. Interleukin-6 as potential mediator of long-term neuropsychiatric symptoms of COVID-19. *Psychoneuroendocrinol* 2021;131:105295.
- [82] Higgins V, Sohaei D, Diamandis EP, et al. COVID-19: from an acute to chronic disease? Potential long-term health consequences. *Crit Rev Clin Lab Sci* 2021;58(5):297–310.
- [83] Duong-Quy S, Vo-Pham-Minh T, Tran-Xuan Q, et al. Post-COVID-19 pulmonary fibrosis: facts-challenges and futures: a narrative review. *Pulm Ther* 2023;9(3):295–307.
- [84] Li X, Li J, Zhang Y, et al. The role of IL-8 in the chronic airway inflammation and its research progress. *Lin Chuang Er Bi Yan Hou Tou Jing Wai Ke Za Zhi* 2021;35(12):1144–1148.
- [85] D'rozario R, Raychaudhuri D, Bandopadhyay P, et al. Circulating interleukin-8 dynamics parallels disease course and is linked to clinical outcomes in severe COVID-19. *Viruses* 2023;15(2):549.
- [86] Udwadia ZF, Koul PA, Richeldi L. Post-COVID lung fibrosis: the tsunami that will follow the earthquake. *Lung India* 2021;38(Supplement):S41–S47.
- [87] Zhang Z, Zhao L, Zhou X, et al. Role of inflammation, immunity, and oxidative stress in hypertension: new insights and potential therapeutic targets. *Front Immunol* 2022;13:1098725.

- [88] Perumal R, Shunmugam L, Naidoo K, et al. Biological mechanisms underpinning the development of long COVID. *iScience* 2023;26(6):106935.
- [89] Cunningham L, Kimber I, Basketter D, et al. Perforin, COVID-19 and a possible pathogenic auto-inflammatory feedback loop. *Scand J Immunol* 2021;94(5):e13102.
- [90] Yin K, Peluso MJ, Thomas R, et al. Long COVID manifests with T cell dysregulation, inflammation, and an uncoordinated adaptive immune response to SARS-CoV-2. *bioRxiv* 2023;25(2):218–225.
- [91] Roe K. A role for T-cell exhaustion in long COVID-19 and severe outcomes for several categories of COVID-19 patients. *J Neurosci Res* 2021;99(10):2367–2376.
- [92] Zhang HP, Sun YL, Wang YF, et al. Recent developments in the immunopathology of COVID-19. *Allergy* 2023;78(2):369–388.
- [93] Sette A, Crotty S. Adaptive immunity to SARS-CoV-2 and COVID-19. *Cell* 2021;184(4):861–880.
- [94] Klein J, Wood J, Jaycox J, et al. Distinguishing features of long COVID identified through immune profiling. *medRxiv* 2022;623(7985):139–148.
- [95] Titov A, Kaminskiy Y, Ganeeva I, et al. Knowns and unknowns about CAR-T cell dysfunction. *Cancers (Basel)* 2022;14(4):1078.
- [96] Glynne P, Tahmasebi N, Gant V, et al. Long COVID following mild SARS-CoV-2 infection: characteristic T cell alterations and response to antihistamines. *J Investig Med* 2022;70(1):61–67.
- [97] Crawford A, Angelosanto JM, Kao C, et al. Molecular and transcriptional basis of CD4(+) T cell dysfunction during chronic infection. *Immunity* 2014;40(2):289–302.
- [98] Mcgonagle D, Sharif K, O'regan A, et al. The role of cytokines including interleukin-6 in COVID-19 induced pneumonia and macrophage activation syndrome-like disease. *Autoimmun Rev* 2020;19(6):102537.
- [99] Phetsouphanh C, Darley DR, Wilson DB, et al. Immunological dysfunction persists for 8 months following initial mild-to-moderate SARS-CoV-2 infection. *Nat Immunol* 2022;23(2):210–216.
- [100] Rha MS, Shin EC. Activation or exhaustion of CD8(+) T cells in patients with COVID-19. *Cell Mol Immunol* 2021;18(10):2325–2333.
- [101] Zheng YY, Ma YT, Zhang JY, et al. COVID-19 and the cardiovascular system. *Nat Rev Cardiol* 2020;17(5):259–260.
- [102] Sadeghi A, Tahmasebi S, Mahmood A, et al. Th17 and treg cells function in SARS-CoV2 patients compared with healthy controls. *J Cell Physiol* 2021;236(4):2829–2839.
- [103] Meckiff BJ, Ramirez-Suastegui C, Fajardo V, et al. Imbalance of regulatory and cytotoxic SARS-CoV-2-reactive CD4(+) T cells in COVID-19. *Cell* 2020;183(5):1340–1360.
- [104] Dhawan M, Rabaan AA, Alwarthan S, et al. Regulatory T Cells (Tregs) and COVID-19: unveiling the mechanisms, and therapeutic potentialities with a special focus on long COVID. *Vaccines (Basel)* 2023;11(3):699.
- [105] Jin D, An XD, Zhang YQ, et al. Potential mechanism prediction of herbal medicine for pulmonary fibrosis associated with SARS-CoV-2 infection based on network analysis and molecular docking. *Front Pharmacol* 2021;12:602218.
- [106] Bian YQ, Ma J, Ren Y, et al. Discovery of intervention effect of Chinese herbal formulas on COVID-19 pulmonary fibrosis treated by VEGFR and FGFR inhibitors. *Zhongguo Zhong Yao Za Zhi* 2020;45(7):1481–1487.
- [107] Jiang LL, An XD, Duan YY, et al. The pathological mechanism of the COVID-19 convalescence and its treatment with traditional Chinese medicine. *Front Pharmacol* 2023;13:1054312.
- [108] Chen YQ, Liu CL, Wang TP, et al. Efficacy and safety of Bufei Huoxue capsules in the management of convalescent patients with COVID-19 infection: a multicentre, double-blind, and randomised controlled trial. *J Ethnopharmacol* 2022;284:114830.
- [109] Zhao P, Liu XF, Dong HR, et al. Bufei yishen formula restores Th17/Treg balance and attenuates chronic obstructive pulmonary disease activation of the adenosine 2a receptor. *Front Pharmacol* 2020;11:1212.
- [110] Hongjiao G, Yanming X. Discussion on the mechanism of immune function regulation of traditional Chinese medicine in convalescent and discharged patients with new coronavirus pneumonia. *Mod Tradit Chin Med Materia Med World Sci Technol* 2021;23(2):482–487.
- [111] Bai RB, Zhang YJ, Fan JM, et al. Immune-enhancement effects of oligosaccharides from *Codonopsis pilosula* on cyclophosphamide induced immunosuppression in mice. *Food Funct* 2020;11(4):3306–3315.
- [112] Saeed M, Naveed M, Arain MA, et al. Quercetin: nutritional and beneficial effects in poultry. *Worlds Poult Sci J* 2017;73(2):355–364.
- [113] Bohan W, Suofang S, Xiaona Z. Exploration on mechanism of futu shengjin rehabilitation formula in regulating immune function during COVID-19 convalescence based on the network pharmacology. *Nanjing Univ Tradit Chin Med* 2021;37(1):91–95.
- [114] Ma CH, Ma ZQ, Fu Q, et al. Anti-asthmatic effects of baicalin in a mouse model of allergic asthma. *Phytother Res* 2014;28(2):231–237.
- [115] Xu L, Li JX, Zhang Y, et al. Regulatory effect of baicalin on the imbalance of Th17/Treg responses in mice with allergic asthma. *J Ethnopharmacol* 2017;208:199–206.
- [116] Sun J, Li LL, Wu JF, et al. Effects of baicalin on airway remodeling in asthmatic mice. *Planta Med* 2013;79(3-4):199–206.
- [117] Xiong GH, Liu SY, Gao JL, et al. Naringin protects ovalbumin-induced airway inflammation in a mouse model of asthma. *Inflammation* 2016;39(2):891–899.
- [118] Huang WC, Liu CY, Shen SC, et al. Protective effects of licochalcone A improve airway hyper-responsiveness and oxidative stress in a mouse model of asthma. *Cells* 2019;8(6):617.
- [119] Andre DM, Calixto MC, Sollon C, et al. Therapy with resveratrol attenuates obesity-associated allergic airway inflammation in mice. *Int Immunopharmacol* 2016;38:298–305.
- [120] Huang X, Tang L, Wang F, et al. Astragaloside IV attenuates allergic inflammation by regulation Th1/Th2 cytokine and enhancement CD4(+)CD25(+)Foxp3 T cells in ovalbumin-induced asthma. *Immunobiology* 2014;219(7):565–571.
- [121] Shen ZQ, Yu M, Dong ZF. Research progress on the pharmacodynamic mechanisms of sini powder against depression from the perspective of the central nervous system. *Med Lith* 2023;59(4):741.
- [122] Yan X, Zhang Z, Xu F, et al. Effect of Sini San freeze-dried powder on sleep-waking cycle in insomnia rats. *J Tradit Chin Med* 2014;34(5):572–575.
- [123] Wei SS, Yang HJ, Huang JW, et al. Traditional herbal formula Sini Powder extract produces antidepressant-like effects through stress-related mechanisms in rats. *Chin J Nat Med* 2016;14(8):590–598.
- [124] Qu S, Liu M, Cao C, et al. Chinese medicine formula Kai-Xin-San ameliorates neuronal inflammation of CUMS-induced depression-like mice and reduces the expressions of inflammatory factors via inhibiting TLR4/IKK/NF-kappaB pathways on BV2 cells. *Front Pharmacol* 2021;12:626949.
- [125] Li X, Qin XM, Tian JS, et al. Integrated network pharmacology and metabolomics to dissect the combination mechanisms of DC-Pall herb pair for treating depression. *J Ethnopharmacol* 2021;264:113281.
- [126] Chen JJ, Li T, Qin XM, et al. Integration of non-targeted metabolomics and targeted quantitative analysis to elucidate the synergistic antidepressant effect of bupleurum Chinese DC Paeonia Lactiflora Pall Herb Pair by regulating purine metabolism. *Front Pharmacol* 2022;13:900459.
- [127] Yan Y, Han R, Ma Y, et al. Plant adaptive agents: promising therapeutic molecules in the treatment of post-viral fatigue. *Acupunct Herb Med* 2023;3(1):20–27.
- [128] Liu HB, Lu XY, Hu Y, et al. Chemical constituents of Panax ginseng and Panax notoginseng explain why they differ in therapeutic efficacy. *Pharmacol Res* 2020;161:105263.
- [129] Yi LT, Zhu JX, Dong SQ, et al. Berberine exerts antidepressant-like effects via regulating miR-34a-synaptotagmin1/Bcl-2 axis. *Chin Herb Med* 2021;13(1):116–123.
- [130] Wang Y, Tong Q, Ma SR, et al. Oral berberine improves brain DOPA/dopamine levels to ameliorate Parkinson's disease by regulating gut microbiota. *Signal Transduct Target Ther* 2021;6(1):77.
- [131] Pingali S, Donahue JP, Payton-Stewart F. Tetrahydroberberine, a pharmacologically active naturally occurring alkaloid. *Acta Crystallogr C Struct Chem* 2015;71:262–265.
- [132] Bai X, Fu RJ, Zhang S, et al. Potential medicinal value of celastrol and its synthesized analogues for central nervous system diseases. *Biomed Pharmacother* 2021;139:111551.
- [133] Zhang XM, Zhao WP, Liu XF, et al. Celastrol ameliorates inflammatory pain and modulates HMGB1/NF-kB signaling pathway in dorsal root ganglion. *Neurosci Lett* 2019;692:83–89.
- [134] Yan LL, Zhang WY, Wei XH, et al. Gualou Xiebai decoction, a traditional Chinese medicine, prevents cardiac reperfusion injury of hyperlipidemia rat via energy modulation. *Front Physiol* 2018;9:296.
- [135] Zhong Y, Chen L, Li M, et al. Dangshen erling decoction ameliorates myocardial hypertrophy via inhibiting myocardial inflammation. *Front Pharmacol* 2021;12:725186.

- [136] Chen J, Liu Z, Deng F, et al. Mechanisms of Lian-Gui-Ning-Xin-Tang in the treatment of arrhythmia: integrated pharmacology and *in vivo* pharmacological assessment. *Phytomedicine* 2022;99:153989.
- [137] Kim JH. Pharmacological and medical applications of ginsenosides: a review for use in cardiovascular diseases. *J Ginseng Res* 2018;42(3):264–269.
- [138] Lee CH, Kim JH. A review on the medicinal potentials of ginseng and ginsenosides on cardiovascular diseases. *J Ginseng Res* 2014;38(3):161–166.
- [139] Furukawa T, Bai CX, Kaihara A, et al. Ginsenoside Re, a main phytosterol of Panax ginseng, activates cardiac potassium channels *via* a nongenomic pathway of sex hormones. *Mol Pharmacol* 2006;70(6):1916–1924.
- [140] Deng J, Lv XT, Wu Q, et al. Ginsenoside Rg(1) inhibits rat left ventricular hypertrophy induced by abdominal aorta coarctation: involvement of calcineurin and mitogen-activated protein kinase signalings. *Eur J Pharmacol* 2009;608(1-3):42–47.
- [141] Tang F, Lu M, Yu L, et al. Inhibition of TNF-alpha-mediated NF-kappaB activation by Ginsenoside Rg1 contributes the attenuation of cardiac hypertrophy induced by abdominal aorta coarctation. *J Cardiovasc Pharmacol* 2016;68(4):257–264.
- [142] Wang Z, Li M, Wu WK, et al. Ginsenoside Rb1 preconditioning protects against myocardial infarction after regional ischemia and reperfusion by activation of phosphatidylinositol-3-kinase signal transduction. *Cardiovasc Drugs Ther* 2008;22(6):443–452.
- [143] Hao DC, Ge GB, Xiao PG. Anticancer drug targets of salvia phytometabolites: chemistry, biology and omics. *Curr Drug Targets* 2018;19(1):1–20.
- [144] Guo R, Li L, Su J, et al. Pharmacological activity and mechanism of tanshinone IIA in related diseases. *Drug Des Devel Ther* 2020;14:4735–4748.
- [145] Tang B, Zhang JG, Tan HY, et al. Astragaloside IV inhibits ventricular remodeling and improves fatty acid utilization in rats with chronic heart failure. *Biosci Rep* 2018;38(3):BSR20171036.
- [146] Nie P, Meng FJ, Zhang JG, et al. Astragaloside IV exerts a myocardial protective effect against cardiac hypertrophy in rats, partially *via* activating the Nrf2/HO-1 signaling pathway. *Oxid Med Cell Longevity* 2019;2019:4625912.
- [147] Tan YQ, Chen HW, Li J. Astragaloside IV: an effective drug for the treatment of cardiovascular diseases. *Drug Des Devel Ther* 2020;14:3731–3746.
- [148] Lontchi-Yimagou E, Sobngwi E, Matsha TE, et al. Diabetes mellitus and inflammation. *Curr Diab Rep* 2013;13(3):435–444.
- [149] Liu Y, Wang AT, Wen LN, et al. A Chinese medicine formula (Jinqi Jiangtang Tablet): a review on its chemical constituents, quality control, pharmacokinetics studies, pharmacological properties and clinical applications. *J Ethnopharmacol* 2019;236:1–8.
- [150] Liu CM, Chen J, Yang S, et al. The Chinese herbal formula Zhibai Dihuang Granule treat Yin-deficiency-heat syndrome rats by regulating the immune responses. *J Ethnopharmacol* 2018;225:271–278.
- [151] Liu YX, Song A, Zang SS, et al. Jinlida reduces insulin resistance and ameliorates liver oxidative stress in high-fat fed rats. *J Ethnopharmacol* 2015;162:244–252.
- [152] Shi YL, Liu WJ, Zhang XF, et al. Effect of Chinese herbal medicine Jinlida Granule in treatment of patients with impaired glucose tolerance. *Chin Med J (Engl)* 2016;129(19):2281–2286.
- [153] Zang SS, Song A, Liu YX, et al. Chinese medicine Jinlida (JLD) ameliorates high-fat-diet induced insulin resistance in rats by reducing lipid accumulation in skeletal muscle. *Int J Clin Exp Med* 2015;8(3):4620–4634.
- [154] Wang CQ, Dai XL, Zhang DF, et al. Jinlida granules improve dysfunction of hypothalamic-pituitary-thyroid axis in diabetic rats induced by STZ. *Biomed Res Int-Uk* 2018;2018:4764030.
- [155] Hong YJ, Kim N, Lee K, et al. Korean red ginseng (Panax ginseng) ameliorates type 1 diabetes and restores immune cell compartments. *J Ethnopharmacol* 2012;144(2):225–233.
- [156] Gao Y, Li J, Chu S, et al. Ginsenoside Rg1 protects mice against streptozotocin-induced type 1 diabetic by modulating the NLRP3 and Keap1/Nrf2/HO-1 pathways. *Eur J Pharmacol* 2020;866:172801.
- [157] Gao XY, Liu GC, Zhang JX, et al. Pharmacological properties of Ginsenoside Re. *Front Pharmacol* 2022;13:754191.
- [158] Chen Q, Zhu L, Tang Y, et al. Preparation-related structural diversity and medical potential in the treatment of diabetes mellitus with ginseng pectins. *Ann N Y Acad Sci* 2017;1401(1):75–89.
- [159] Li J, Casteels T, Frogne T, et al. Artemisinins target GABA(A) receptor signaling and impair alpha cell identity. *Cell* 2017;168(1-2):86–100.e15.
- [160] Guo Y, Fu W, Xin YK, et al. Antidiabetic and antiobesity effects of artemether in db/db Mice. *Biomed Res Int-Uk* 2018;2018:8639523.
- [161] Lee J, Knu MH, Lee JH, et al. Artemisinic acid is a regulator of adipocyte differentiation and C/EBP δ expression. *J Cell Biochem* 2012;113(7):2488–2499.
- [162] Yuan FY, Zhang M, Xu P, et al. Tanshinone IIA improves diabetes mellitus *via* the NF- κ B-induced AMPK signal pathway. *Exp Ther Med* 2018;16(5):4225–4231.
- [163] Zhu YH, Han QQ, Wang L, et al. Jinhua Qinggan granules attenuates acute lung injury by promotion of neutrophil apoptosis and inhibition of TLR4/MyD88/NF-KB pathway. *J Ethnopharmacol* 2023;301:115763.
- [164] Li Q, Ran QS, Sun LD, et al. Lian Hua Qing Wen capsules, a potent epithelial protector in acute lung injury model, block proapoptotic communication between macrophages, and alveolar epithelial cells. *Front Pharmacol* 2020;11:522729.
- [165] Lem FF, Opook F, Lee DJH, et al. Molecular mechanism of action of repurposed drugs and traditional Chinese medicine used for the treatment of patients infected with COVID-19: a systematic scoping review. *Front Pharmacol* 2021;11:585331.
- [166] Zhang FB, Guo FF, Zhang Y, et al. Huashibaidu formula attenuates sepsis-induced acute lung injury suppressing cytokine storm: implications for treatment of COVID-19. *Phytomedicine* 2023;109:154549.
- [167] Li T, Zhao M, Zhu M, et al. Xuanfei Baidu decoction, a Chinese herbal medicine for coronavirus disease 2019 (COVID-19): a randomized clinical trial. *Acupunct Herb Med* 2023;3(3):207–212.
- [168] Zhang S, Yang Z, Chen ZL, et al. Efficacy and safety of “Three Chinese patent medicines and three TCM prescriptions” for COVID-19: a systematic review and network meta-analysis. *Evid Based Compl Alt* 2022;2022:4654793.
- [169] Xiao G, Wang S, Wang R, et al. “Three medicines and three formulas” in COVID-19: from bench to bedside. *Acupunct Herb Med* 2023;3(4):309–322.
- [170] Ma L, Zhao X, Liu T, et al. Xuanfei Baidu decoction attenuates intestinal disorders by modulating NF- κ B pathway, regulating T cell immunity and improving intestinal flora. *Phytomedicine* 2022;101:154100.
- [171] Li ZH, Pan HT, Yang JH, et al. Xuanfei Baidu formula alleviates impaired mitochondrial dynamics and activated NLRP3 inflammasome by repressing NF- κ B and MAPK pathways in LPS-induced ALI and inflammation models. *Phytomedicine* 2023;108:114701.
- [172] Wang YY, Wang X, Li YX, et al. Xuanfei Baidu decoction reduces acute lung injury by regulating infiltration of neutrophils and macrophages PD-1/IL17A pathway. *Pharmacol Res* 2022;176:106083.
- [173] Wang YY, Sang XQ, Shao R, et al. Xuanfei Baidu decoction protects against macrophages induced inflammation and pulmonary fibrosis *via* inhibiting IL-6/STAT3 signaling pathway. *J Ethnopharmacol* 2022;283:114701.
- [174] Hu T, Li L, Ma Q. Research progress of immunomodulation on Anti-COVID-19 and the effective components from traditional Chinese medicine. *Am J Chin Med* 2023;51(6):1337–1360.
- [175] Huang YF, Bai C, He F, et al. Review on the potential action mechanisms of Chinese medicines in treating coronavirus disease 2019 (COVID-19). *Pharmacol Res* 2020;158:104939.
- [176] Bastaminejad S, Bakhtiyari S. Quercetin and its relative therapeutic potential against COVID-19: a retrospective review and prospective overview. *Curr Mol Med* 2021;21(5):385–391.
- [177] Di Pierro F, Khan A, Bertuccioli A, et al. Quercetin Phytosome[®] as a potential candidate for managing COVID-19. *Minerva Gastroenterol* 2021;67(2):190–195.
- [178] Liu WH, Zhi AM. The potential of Quercetin to protect against loperamide-induced constipation in rats. *Food Sci Nutr* 2021;9(6):3297–3307.
- [179] Wang LF, Wu F, Hong YL, et al. Research progress in the treatment of slow transit constipation by traditional Chinese medicine. *J Ethnopharmacol* 2022;290:115075.
- [180] Chen GX, Yang ZY, Wen D, et al. Polydatin has anti-inflammatory and antioxidant effects in LPS-induced macrophages and improves DSS-induced mice colitis. *Immun Inflammation Dis* 2021;9(3):959–970.
- [181] Niu YT, Zhang J, Shi DH, et al. Glycosides as potential medicinal components for ulcerative colitis: a review. *Molecules* 2023;28(13):5210.
- [182] Ng CYJ, Bun HH, Zhao Y, et al. TCM “medicine and food homology” in the management of post-COVID disorders. *Front Immunol* 2023;14:1234307.

- [183] Yuan X, Sun S, Wang S, et al. Effects of astragaloside IV on IFN-gamma level and prolonged airway dysfunction in a murine model of chronic asthma. *Planta Med* 2011;77(4):328–333.
- [184] Dong SJ, Zhong YQ, Lu WT, et al. Baicalin inhibits lipopolysaccharide-induced inflammation through signaling NF- κ B pathway in HBE16 airway epithelial cells. *Inflammation* 2015;38(4):1493–1501.
- [185] Lee M, Kim S, Kwon OK, et al. Anti-inflammatory and anti-asthmatic effects of resveratrol, a polyphenolic stilbene, in a mouse model of allergic asthma. *Int Immunopharmacol* 2009;9(4):418–424.
- [186] Li L, Gou CY, Li XM, et al. Effects of Chinese medicine on symptoms, syndrome evolution, and lung inflammation absorption in COVID-19 convalescent patients during 84-day follow-up after hospital discharge: a prospective cohort and nested case-control study. *Chin J Integr Med* 2021;27(4):245–251.
- [187] Li JS, Xie Y, Zhao P, et al. A Chinese herbal formula ameliorates COPD by inhibiting the inflammatory response via downregulation of p65, JNK, and p38. *Phytomedicine* 2021;83:153475.
- [188] Chen XH, Zhang B, Li JY, et al. Celastrol attenuates incision-induced inflammation and pain associated with inhibition of the NF- κ B signalling pathway via SARM. *Life Sci* 2018;205:136–144.
- [189] Yang HB, Liu C, Jiang J, et al. Celastrol attenuates multiple sclerosis and optic neuritis in an experimental autoimmune encephalomyelitis model. *Front Pharmacol* 2017;8:44.
- [190] Yang L, Xu HH, Hong Q, et al. Crocus sativus L. produces anti-inflammatory effects and regulates NLRP3–NF- κ B pathway. *Acupuncture and Herbal Medicine* 2024;4(3):375–385.
- [191] Mu J, Cheng FF, Wang QG, et al. Sini powder ameliorates the inflammatory response in rats with stress-induced non-alcoholic fatty liver disease by inhibiting the nuclear factor kappa-B/pyrin domain-containing protein 3 pathway. *J Tradit Chin Med* 2020;40(2):253–266.
- [192] Wang Q, Zhang YL, Li YH, et al. The memory enhancement effect of Kai Xin San on cognitive deficit induced by simulated weightlessness in rats. *J Ethnopharmacol* 2016;187:9–16.
- [193] Mei M, Tang FT, Lu ML, et al. Astragaloside IV attenuates apoptosis of hypertrophic cardiomyocyte through inhibiting oxidative stress and calpain-1 activation. *Environ Toxicol Phar* 2015;40(3):764–773.
- [194] Liu Q, Liu SN, Gao LH, et al. Anti-diabetic effects and mechanisms of action of a Chinese herbal medicine preparation JQ-R and in diabetic KK mice. *Acta Pharm Sin B* 2017;7(4):461–469.
- [195] Hsu YH, Chen TH, Wu MY, et al. Protective effects of Zhibai Dihuang Wan on renal tubular cells affected with gentamicin-induced apoptosis. *J Ethnopharmacol* 2014;151(1):635–642.
- [196] Liu ZY, Song N, Li MS, et al. Based on mRNA sequencing techniques to explore the molecular mechanism of Buzhong Yiqi decoction for autoimmune thyroiditis. *Comb Chem High T Scr* 2024;27(3):408–419.
- [197] Huang K, Zhang P, Zhang ZH, et al. Traditional Chinese medicine (TCM) in the treatment of COVID-19 and other viral infections: efficacies and mechanisms. *Pharmacol Therapeut* 2021;225:107843.